

TACAN NQX Chan 78	APCH CRS 068°	Rwy Idg 10,001 TDZE 4 Arpt Elev 6
----------------------	------------------	---

AL-214 [USN]

KEY WEST NAS (BOCA CHICA FLD) (KNQX)

▼ * When ALS inop, increase vis CAT ABC to 1 mile, CAT D to 1/2 miles.
 ** When ALS inop, increase vis CAT ABCD to 1/2 mile.

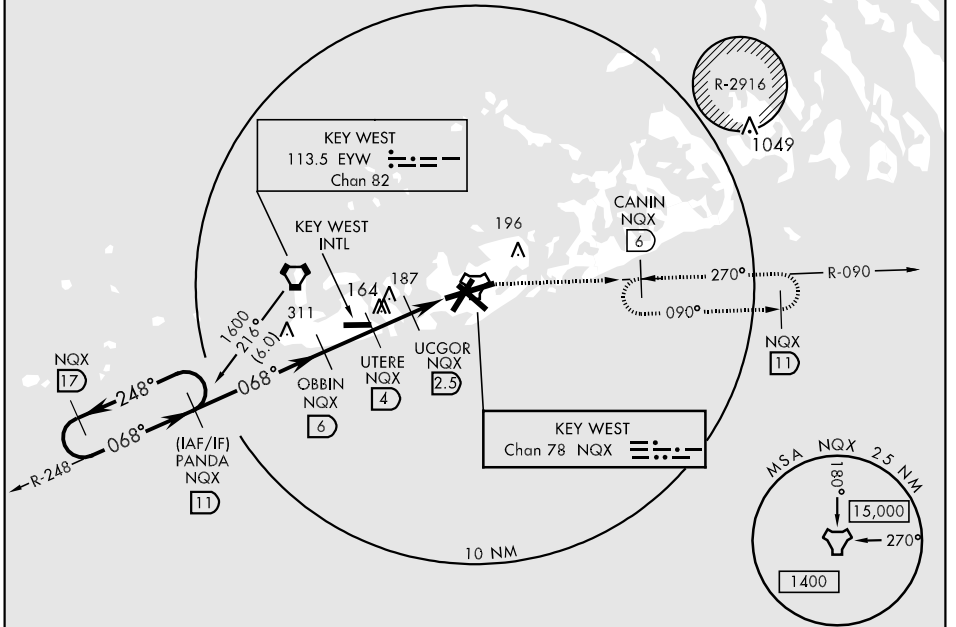


MISSED APPROACH: Climb to 1600 via R-248 to NQX TACAN then via R-090 to CANIN (NQX R-090/6 DME) and hold.

ATIS * 307.025	NAVY KEY WEST APP CON 124.025 289.85 (NQX 340° - 069°) 126.575 313.7 (NQX 070° - 339°)	NAVY KEY WEST TOWER * 118.575 340.25	GND CON 121.7 336.45	CLNC DEL 121.2 357.4	ASR/PAR
-------------------	--	---	-------------------------	-------------------------	---------

CAUTION: CAT CD intmed seg len 5 NM.

CAUTION: Balloon with strobe light on unmarked cable to 14,000 in R-2916



SE-3, 22 OCT 2009 to 19 NOV 2009

SE-3, 22 OCT 2009 to 19 NOV 2009

EMERG SAFE ALT 100 NM 15,000

	PANDA R-248 NQX 11		OBBIN NQX 6		UTERE NQX 4		UCCGOR NQX 2.5		TACAN NQX 1.9		ZALVO NQX 1.1		ELEV 6	
	1600 ← 248°		1600		1600		580		1000		1000			
	← 068°		← 068°		← 068°		← 068°		← 068°		← 068°		← 068° to TACAN	
	3.51° TCH 42													
	← 2 NM		← 1.5 NM		← 1.4 NM									
CATEGORY	A		B		C		D							
S-7 *	360-1/2		356 (400-1/2)		360-3/4		356 (400-3/4)							
CIRCLING	440-1		500-1		500-1 1/2		560-2							
	434 (500-1)		494 (500-1)		494 (500-1 1/2)		554 (600-2)							
S-PAR 7 **	104-1/4		100 (100-1/4)		GS 3.00°								HIRL all Rwws	