

TACAN NQX Chan 78	APCH CRS 040°	Rwy Idg TDZE Arpt Elev 7002 4 6
-----------------------------	-------------------------	--

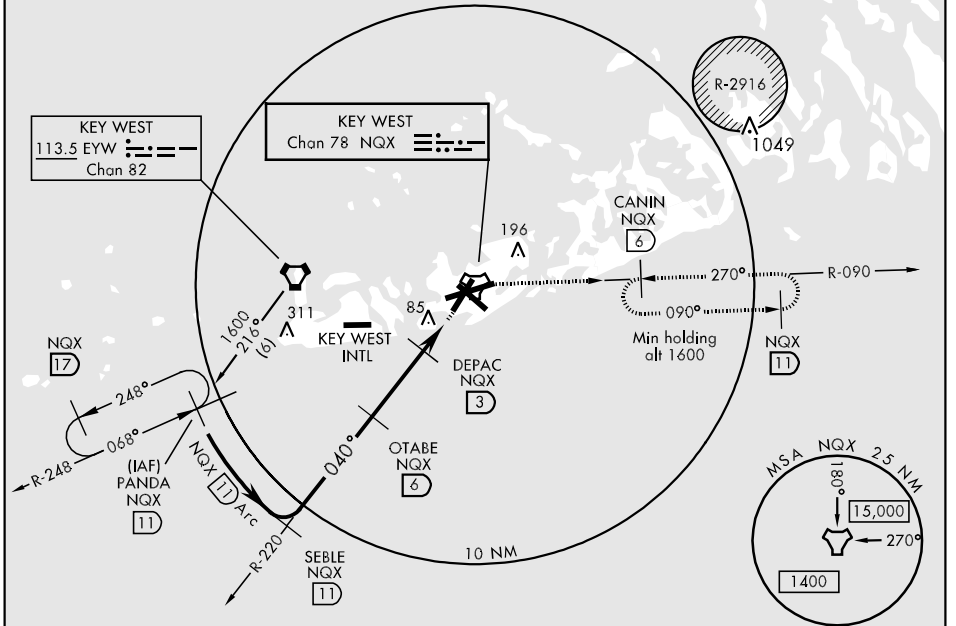
AL-214 [USN] KEY WEST NAS (BOCA CHICA FLD) (KNQX)

<p>ATIS * 307.025</p>		<p>NAVY KEY WEST APP CON 124.025 289.85 (NQX 340° - 069°) 126.575 313.7 (NQX 070° - 339°)</p>		<p>NAVY KEY WEST TOWER * 118.575 340.25</p>		<p>GND CON 121.7 336.45</p>		<p>CLNC DEL 121.2 357.4</p>		<p>ASR/PAR</p>	
---	--	---	--	--	--	--	--	--	--	----------------	--

MISSED APPROACH: Climb to 1600 via R-220 to NQX TACAN then via R-090 to CANIN (NQX R-090/6 DME) and hold.

CAUTION: CAT CD intmed seg len 5 NM.

CAUTION: Balloon with strobe light on unmarked cable to 14,000 in R-2916



SE-3, 22 OCT 2009 to 19 NOV 2009

SE-3, 22 OCT 2009 to 19 NOV 2009

EMERG SAFE ALT 100 NM 15,000

	PANDA R-248 (11)	SEBEL R-220 (11)	OTABE (6)	DEPAC (3)	HEVEL (1.8)	TACAN
	1600	1600	1600	620		
	040°	040°	040°	040°		
	3.02° TCH 35	(11) Arc				
			3 NM	1.2 NM	.6	
						ELEV 6
						NQX R-220
						NQX R-090
CATEGORY	A	B	C	D		
S-3		340-1	336	(400-1)		
CIRCLING	440-1 434 (500-1)	500-1 494 (500-1)	500-1½ 494 (500-1½)	560-2 554 (600-2)		
S-PAR 3		104-½	100 (100-½)	GS 3.00°		