

| | | |
|----------|-----------|--------|
| APCH CRS | Rwy Idg | 10,001 |
| 075° | TDZE | 4 |
| | Arpt Elev | 6 |

AL-214 [USN]

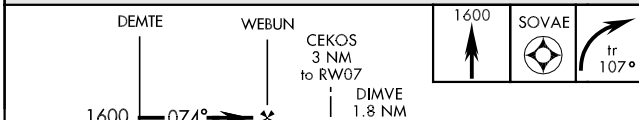
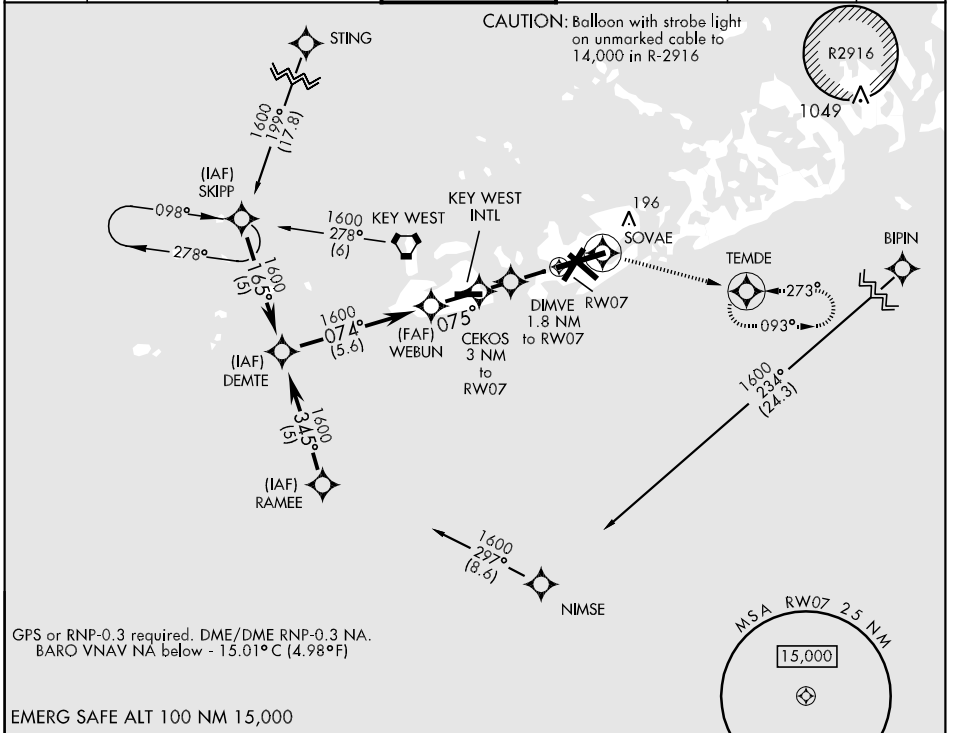
KEY WEST NAS (BOCA CHICA FLD) (KNQX)

- ▼ *When ALS inop, increase vis CAT ABC to 1 mile, CAT D to 1/4 miles.
- ** When ALS inop, increase vis CAT ABCD to 1/4 miles.
- *** When ALS inop, increase vis CAT ABCD to 1/2 mile.

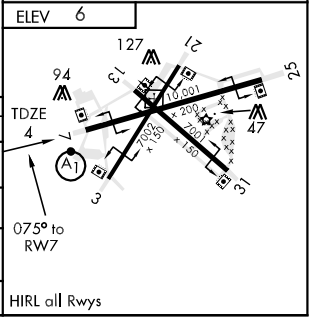


MISSED APPROACH: Climb to 1600 direct SOVAE, then turn right via track 107° to TEMDE and hold. Max missed approach speed 200 KIAS.

| | | | | | |
|---------|---|-----------------------|--------------|-------------|---------|
| ATIS * | NAVY KEY WEST APP CON | NAVY KEY WEST TOWER * | GND CON | CLNC DEL | ASR/PAR |
| 307.025 | 124.025 289.85 (NGX 340° - 069°) 126.575 313.7 (NGX 070° - 339°) | 118.575 340.25 | 121.7 336.45 | 121.2 357.4 | |



| CATEGORY | A | B | C | D |
|-----------------|-------------|-------------|-----------------|-------------|
| LNAV MDA * | 360-1/2 | 356 | (400-1/2) | 360-3/4 |
| LNAV/VNAV DA ** | 360-3/4 | 356 | (400-3/4) | |
| CIRCLING | 440-1 | 500-1 | 500-1 1/2 | 560-2 |
| | 434 (500-1) | 494 (500-1) | 494 (500-1 1/2) | 554 (600-2) |
| S-PAR 7 *** | 104-1/4 | 100 | (100-1/4) | GS 3.00° |



SE-3, 22 OCT 2009 to 19 NOV 2009

SE-3, 22 OCT 2009 to 19 NOV 2009