

KEY WEST, FLORIDA

RNAV (GPS) RWY 3

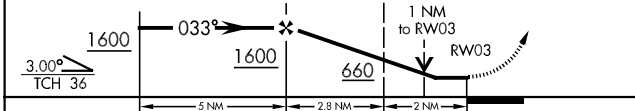
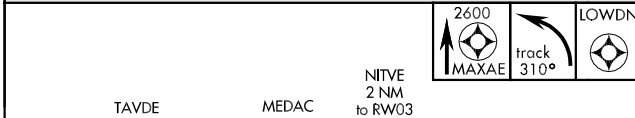
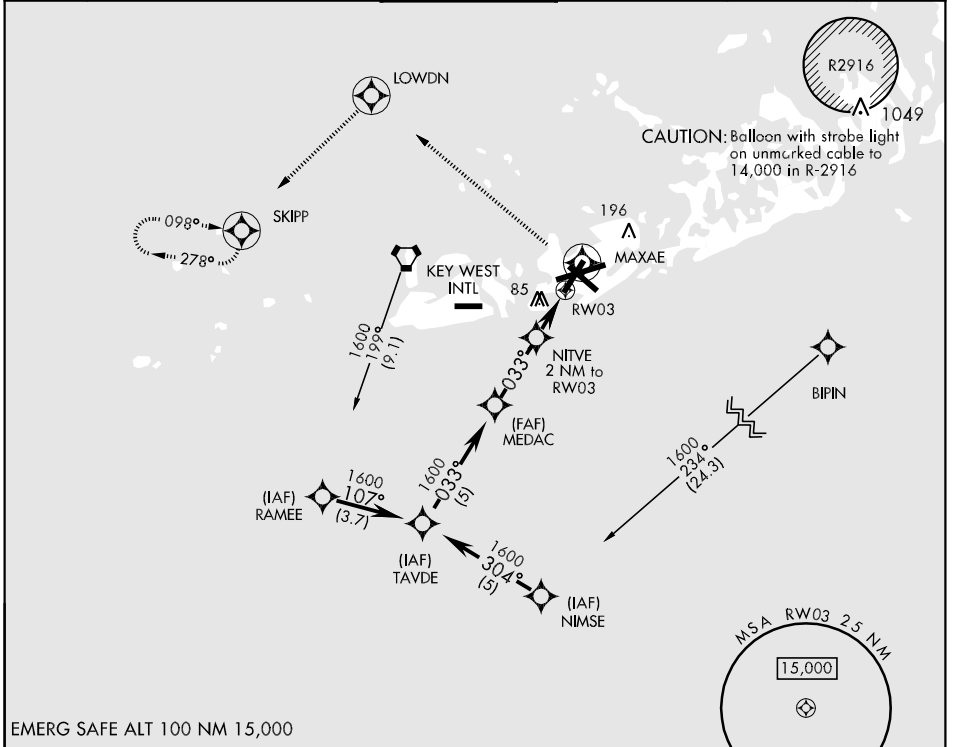
APCH CRS	Rwy Idg	7002
033°	TDZE	4
	Arprt Elev	6

AL-214 [USN] KEY WEST NAS (BOCA CHICA FLD) (KNQX)

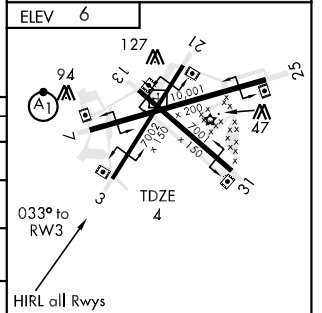
GPS or RNP-0.3 required. DME/DME RNP-0.3 NA. BARO VNAV NA below - 15.01° C (4.98°F)

MISSED APPROACH: Climb to 2600 direct MAXAE, then turn left via track 310° to LOWDN, then turn left via track 226° to SKIPP and hold. Max missed approach speed 200 KIAS.

ATIS ★	NAVY KEY WEST APP CON	NAVY KEY WEST TOWER ★	GND CON	CLNC DEL	ASR/PAR
307.025	124.025 289.85 (NGX 340° - 069°) 126.575 313.7 (NGX 070° - 339°)	118.575 340.25	121.7 336.45	121.2 357.4	



CATEGORY	A	B	C	D
LNAV MDA	360-1	356	(400-1)	
LNAV/VNAV DA	360-1¼	356	(400-1¼)	
CIRCLING	440-1 434 (500-1)	500-1 494 (500-1)	500-1½ 494 (500-1½)	560-2 554 (600-2)
S-PAR 3	204-¾	200	(200-¾)	GS 3.00°



KEY WEST, FLORIDA 24°34'N-81°41'W KEY WEST NAS (BOCA CHICA FLD) (KNQX)
Orig 09015

RNAV (GPS) RWY 3

SE-3, 22 OCT 2009 to 19 NOV 2009

SE-3, 22 OCT 2009 to 19 NOV 2009