

KEY WEST, FLORIDA

RNAV (GPS) RWY 25

APCH CRS	Rwy Idg	10,001
255°	TDZE	5
	Arpt Elev	6

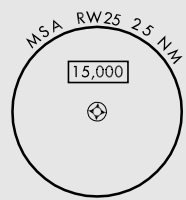
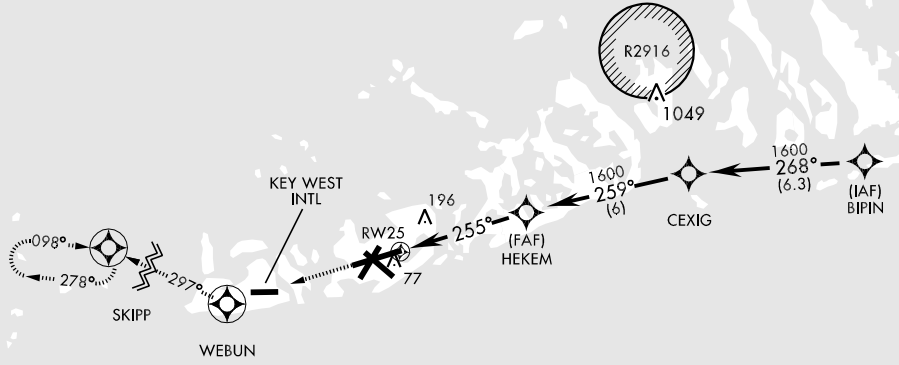
AL-214 [USN]

KEY WEST NAS (BOCA CHICA FLD) (KNQX)

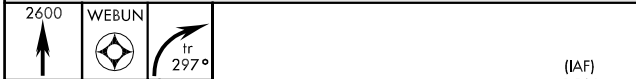
<p>GPS or RNP-0.3 required. DME/DME RNP-0.3 NA.</p>	<p>MISSED APPROACH: Climb to 2600 direct WEBUN, then turn right via track 297° to SKIPP and hold.</p>
---	---

<p>ATIS ★</p> <p>307.025</p>	<p>NAVY KEY WEST APP CON</p> <p>124.025 289.85 (NGX 340° - 069°)</p> <p>126.575 313.7 (NGX 070° - 339°)</p>	<p>NAVY KEY WEST TOWER ★</p> <p>118.575 340.25</p>	<p>GND CON</p> <p>121.7 336.45</p>	<p>CLNC DEL</p> <p>121.2 357.4</p>	<p>ASR/PAR</p>
------------------------------	---	--	------------------------------------	------------------------------------	----------------

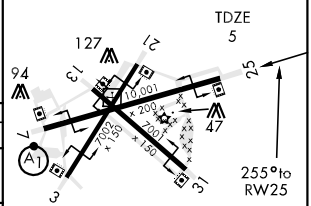
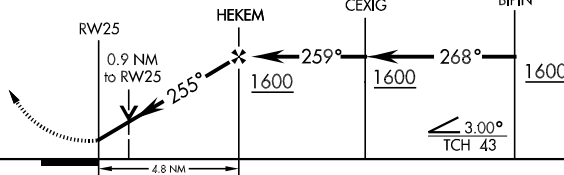
CAUTION: Balloon with strobe light on unmarked cable to 14,000 in R-2916



EMERG SAFE ALT 100 NM 15,000



ELEV 6



CATEGORY	A	B	C	D
LNVA MDA	360-1	355	(400-1)	360-1¼ 355 (400-1¼)
CIRCLING	440-1 434 (500-1)	500-1 494 (500-1)	500-1½ 494 (500-1½)	560-2 554 (600-2)
S-PAR 25	106-½	100	(100-½)	GS 3.00°

HIRL all Rwys

KEY WEST, FLORIDA
Orig 09015

24°34'N-81°41'W

KEY WEST NAS (BOCA CHICA FLD) (KNQX)

RNAV (GPS) RWY 25

SE-3, 22 OCT 2009 to 19 NOV 2009

SE-3, 22 OCT 2009 to 19 NOV 2009