

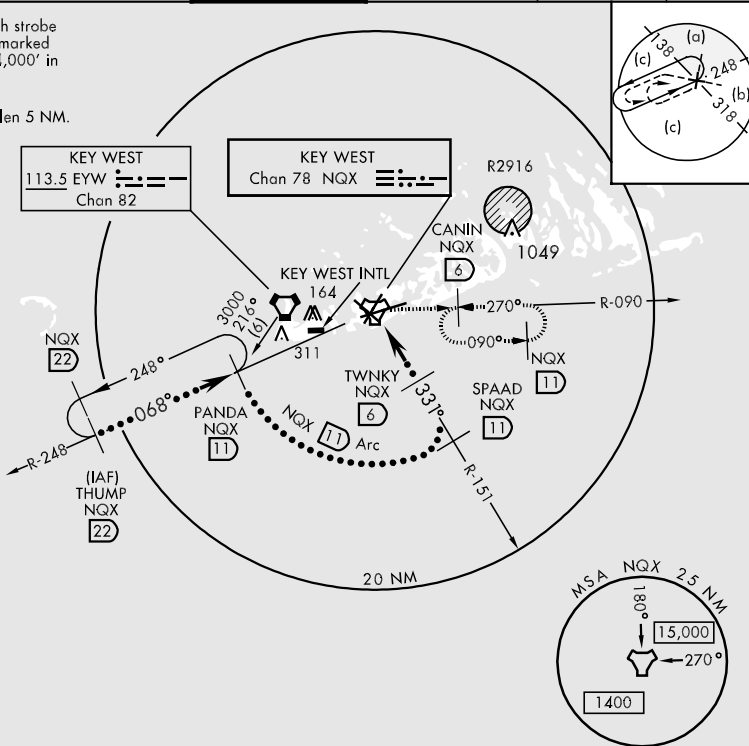
TACAN NQX Chan 78	APCH CRS 331°	Rwy Idg TDZE Arpt Elev 7001 4 6	JAL-214 [USN]	KEY WEST NAS (BOCA CHICA FLD) (KNQX)
-----------------------------	-------------------------	--	---------------	--------------------------------------

▽ MISSED APPROACH: Climbing right turn to 1600 to intercept NQX R-090 to CANIN (NQX R-090/6 DME) and hold.

ATIS ★ 307.025	NAVY KEY WEST APP CON 124.025 289.85 (NQX 340° - 069°) 126.575 313.7 (NQX 070° - 339°)	NAVY KEY WEST TOWER ★ 118.575 340.25	GND CON 121.7 336.45	CLNC DEL 121.2 357.4	ASR/PAR
--------------------------	--	--	--------------------------------	--------------------------------	---------

CAUTION: Balloon with strobe light on unmarked cable to 14,000' in R-2916.

CAUTION: Intmed seg len 5 NM.



SE-3, 22 OCT 2009 to 19 NOV 2009

SE-3, 22 OCT 2009 to 19 NOV 2009

EMERG SAFE ALT 100 NM 15,000

THUMP R-248 (22)	PANDA R-248 (11)	SPAAD R-151 (11)	TWNKY (6)	TACAN	NOLEE (1.3)	CANIN R-090 (11)	ELEV 6
18,000 or as directed by ATC	12,000	1600	1600	1600	1600	1600	
068°	12.85° TCH 50	11 Arc	331°	331°	331°	331°	
4.5 NM				.6			

CATEGORY	C	D	E
S-31	300-1	296	(300-1)
CIRCLING	500-1½ 494 (500-1½)	560-2	554 (600-2)
S-ASR 31	340-1	336	(400-1)

Diagram showing the TACAN station layout with various frequencies and bearings. A 331° bearing is specifically noted towards the TACAN station.