

VOR RWY 3

KANSAS CITY/CHARLES B. WHEELER DOWNTOWN (MKC)

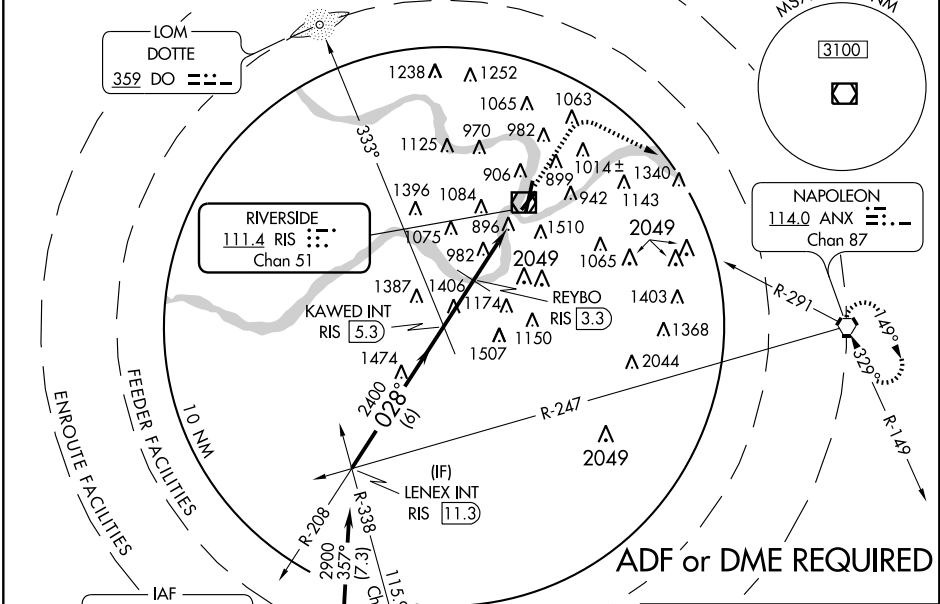
VOR/DME RIS	APP CRS	Rwy Idg	4550
111.4	028°	TDZE	744
Chan 51		Apt Elev	759

NA Circling NA east of Rws 1 and 19. Circling Cat C/D NA Rwy 3.
 If local altimeter setting not received, use Kansas City Intl altimeter setting and increase all MDAs 80 feet.
 VDP NA when using Kansas City Intl altimeter setting.

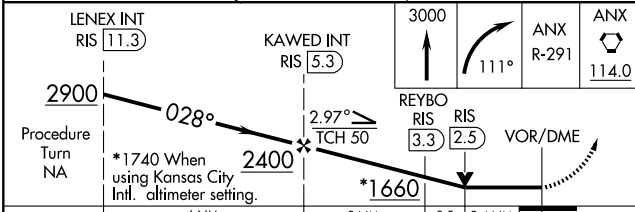
MISSED APPROACH: Climb to 3000 then right turn via heading 111° and ANX R-291 to ANX VORTAC and hold.

ATIS	KANSAS CITY APP CON	DOWNTOWN TOWER	GND CON	CLNC DEL
120.75	118.4 294.7	133.3 257.8	121.9	121.9

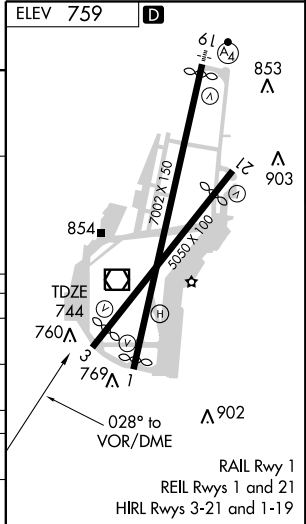
Procedure NA for arrivals at OJC VOR/DME via V10-12 southwest bound.



LENEX INT RIS (11.3)	KAWED INT RIS (5.3)	3000	ANX R-291	ANX 114.0
2900	2400	2900	2400	2400
028°	2.97°	028°	111°	028°
6 NM	2 NM	0.8	2.4 NM	0.1



CATEGORY	A	B	C	D
S-3	1660/60	916 (1000-1¼)	NA	
CIRCLING	1660-1¼	901 (1000-1¼)	1660-2¾	1660-3
			901 (1000-2¾)	901 (1000-3)
REYBO FIX MINIMUMS				
S-3	1540/50	1540/60	NA	
	796 (800-1)	796 (800-1¼)		
CIRCLING	1540-1	1540-1¼	1540-2¼	1540-2½
	781 (800-1)	781 (800-1¼)	781 (800-2¼)	781 (800-2½)



NC-3, 22 OCT 2009 to 19 NOV 2009

NC-3, 22 OCT 2009 to 19 NOV 2009

VOR RWY 3