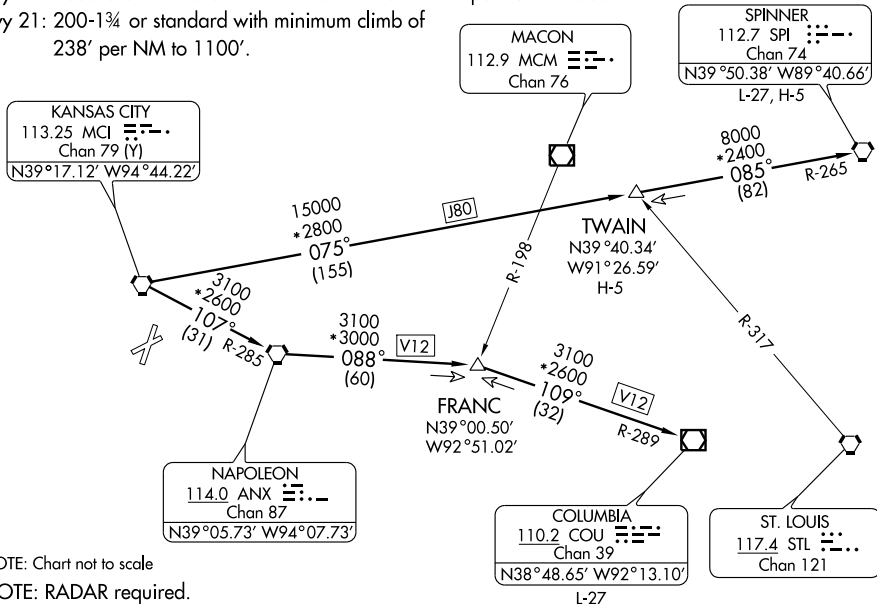


# LAKES FIVE DEPARTURE

## TAKE-OFF MINIMUMS

- Rwy 1: 400-2¼ or standard with minimum climb of 335' per NM to 2000'.
- Rwy 3: 400-2½ or standard with minimum climb of 235' per NM to 1900'.
- Rwy 19: 1300-3 or standard with minimum climb of 669' per NM to 2500'.
- Rwy 21: 200-1¾ or standard with minimum climb of 238' per NM to 1100'.

ATIS  
120.75  
CLNC DEL  
121.9



NOTE: Chart not to scale

NOTE: RADAR required.

NOTE: DME required for TWAIN and SPINNER transitions.

## TAKE-OFF OBSTACLE NOTES

- Rwy 1: Multiple roads, trees, buildings, and towers beginning at DER, 135' left of centerline, up to 100' AGL/1079' MSL. OL on elevator 3663' from DER, 1231' right of centerline, 172' AGL/912' MSL.
- Rwy 3: Multiple roads, railroads, poles, buildings, and obstruction lights beginning 40' from DER, 240' right of centerline, up to 94' AGL/853' MSL. OL on elevator 829' from DER, 478' right of centerline, 125' AGL/865' MSL. Crane T 2.1 NM from DER, 3151' right of centerline, 296' AGL/1110' MSL.
- Rwy 19: Multiple trees, towers, buildings, and obstruction lights beginning 282' from DER, 279' right of centerline, up to 291' AGL/1251' MSL. Tower 2.5 NM from DER, 3165' left of centerline, 1168' AGL/2049' MSL.
- Rwy 21: Multiple bridge, levee, trees, cranes, towers, and buildings 205' from DER, 476' right of centerline, up to 118' AGL/858' MSL. OL on elevator 5178' from DER, 803' left of centerline, 148' AGL/896' MSL. Stack 1.3 NM from DER, 589' left of centerline, 198' AGL/948' MSL.

## DEPARTURE ROUTE DESCRIPTION

Expect vectors to appropriate route. Expect filed altitude 10 minutes after departure.

**COLUMBIA TRANSITION (LAKES5.COU):** From over MCI VORTAC via MCI R-107 and ANX R-285 to ANX VORTAC, then via ANX R-088 to FRANC INT, then via COU R-289 to COU VOR/DME.

**SPINNER TRANSITION (LAKES5.SPI):** From over MCI VORTAC via MCI R-075 and SPI R-265 to TWAIN INT, then via SPI R-265 to SPI VORTAC.

**TWAIN TRANSITION (LAKES5.TWAIN):** From over MCI VORTAC via MCI R-075 and SPI R-265 to TWAIN INT.

# LAKES FIVE DEPARTURE