

ILS or LOC RWY 3

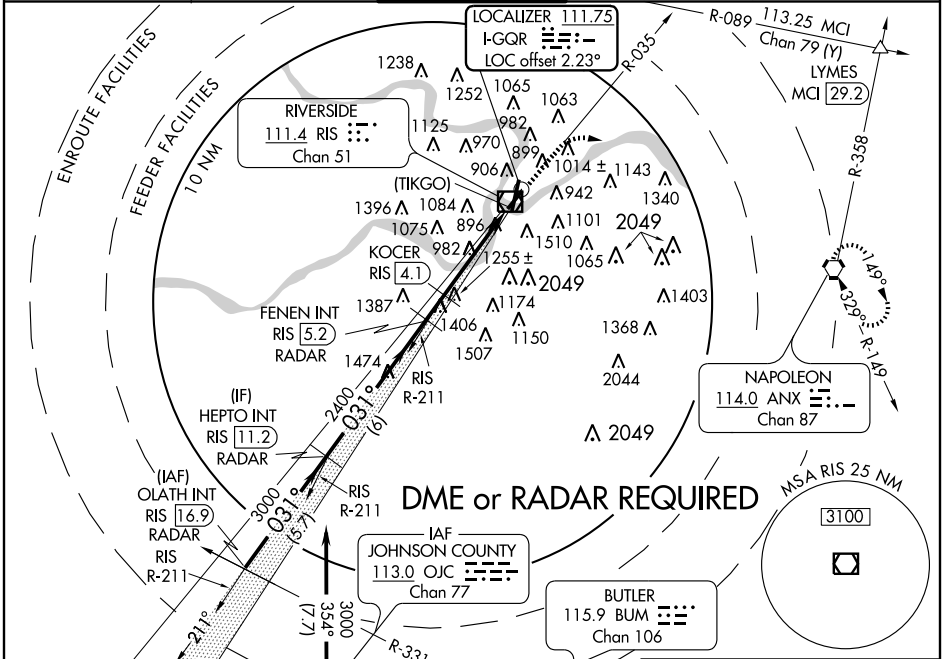
LOC I-QRR 111.75	APP CRS 031°	Rwy Idg 4550
		TDZE 744
		Apt Elev 759

KANSAS CITY/CHARLES B. WHEELER DOWNTOWN (MKC)

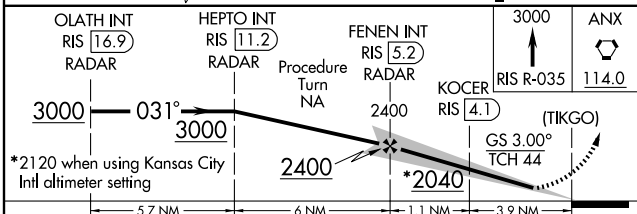
▼ Circling NA east of Rwy 1 and 19. Circling Cat C/D NA Rwy 3.
▲ If local altimeter setting not received, use Kansas City Inl altimeter setting and increase all DAs/MDAs 80 feet. VGS1 and ILS glidepath not coincident.

MISSED APPROACH: Climb to 3000 via RIS VOR/DME R-035 then direct ANX VORTAC and hold.

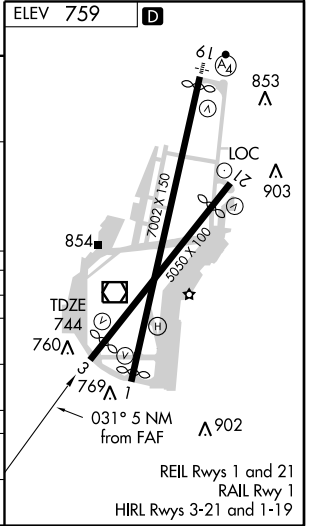
ATIS 120.75	KANSAS CITY APP CON 118.4 294.7	DOWNTOWN TOWER 133.3 257.8	GND CON 121.9	CLNC DEL 121.9
-----------------------	---	--------------------------------------	-------------------------	--------------------------



OLATH INT RIS 16.9 RADAR	HEPTO INT RIS 11.2 RADAR	FENEN INT RIS 5.2 RADAR	3000	ANX 114.0
--------------------------	--------------------------	-------------------------	------	-----------



CATEGORY	A	B	C	D
S-ILS 3	1049/50	305 (300-1)	NA	NA
S-LOC 3	2040/60 1296 (1300-1½)	2040-1½ 1296 (1300-1½)	NA	NA
CIRCLING	2040/60 1281 (1300-1½)	2040-1½ 1281 (1300-1½)	2040-3	1281 (1300-3)
KOCER FIX MINIMUMS # # DME from RIS VOR/DME				
S-LOC 3	1240/50	496 (500-1)	NA	NA
CIRCLING	1400-1	641 (700-1)	1400-1¾ 641 (700-1¾)	1400-2 641 (700-2)



NC-3, 22 OCT 2009 to 19 NOV 2009

NC-3, 22 OCT 2009 to 19 NOV 2009

ILS or LOC RWY 3