

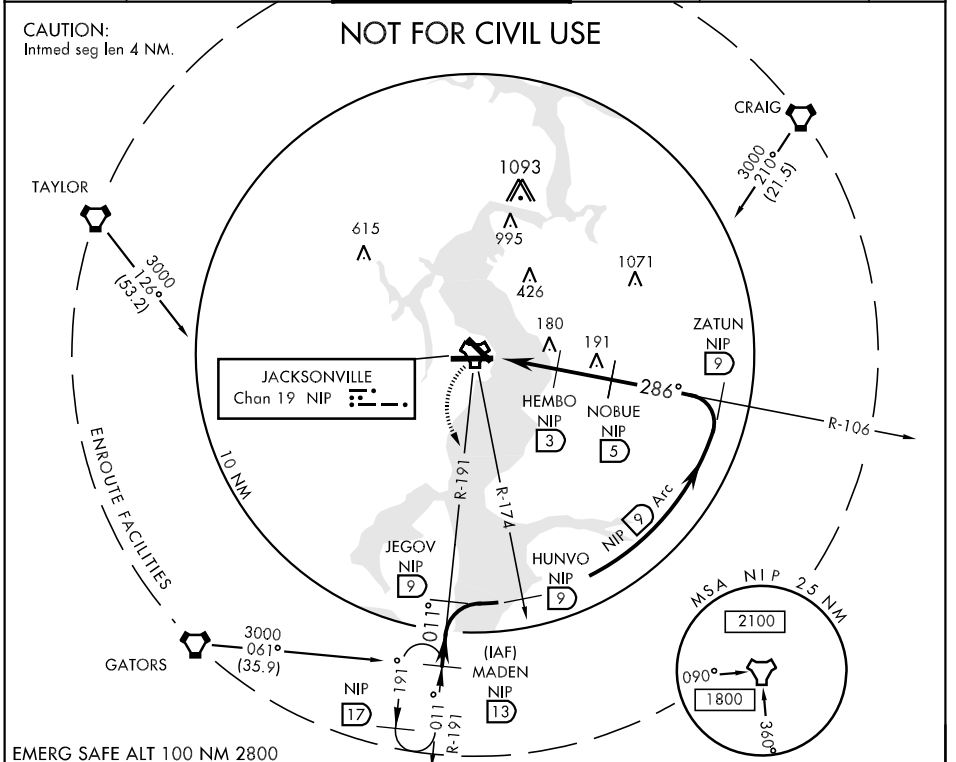
TACAN NIP Chan 19	APCH CRS 286°	Rwy ldg TDZE Arpt Elev 8002 12 20	AL-209 [USN]	JACKSONVILLE NAS (TOWERS FIELD) (KNIP)
--------------------------	----------------------	--	--------------	--

▼ *When ALS inop, increase vis CAT ABC to 1 mile, CAT D to 1¼ miles.
 **When ALS inop, increase vis CAT ABCD to ½ mile.



MISSED APPROACH: Climb to 500 via R-106, then climbing left turn to 1800 via NIP TACAN R-191 to MADEN and hold.

ATIS 281.0	JACKSONVILLE APP CON 123.8 377.05	NAVY JACKSONVILLE TOWER 120.0 340.2	GND CON 128.6 336.4	CLNC DEL 134.775 353.675	ASR/PAR
-------------------	--	--	----------------------------	---------------------------------	---------



SE-3, 22 OCT 2009 to 19 NOV 2009

SE-3, 22 OCT 2009 to 19 NOV 2009

EMERG SAFE ALT 100 NM 2800

500 NIP R-106	1800 NIP R-191	MADEN	ZATUN R-106	HUNVO R-174	JEGOV R-191	MADEN R-191
CATEGORY	A	B	C	D		
S-28*	400-½ 388 (400-½)		400-¾ 388 (400-¾)			
CIRCLING	480-1	460 (500-1)	480-1½ 460 (500-1½)	580-2 560 (600-2)		
S-PAR 28**	112-¼	100 (100-¼)	GS 3.00°			

