

TACAN Chan 19	NIP 087°	APCH CRS 087°	Rwy ldg TDZE 8002 Arpt Elev 20	AL-209 [USN]	JACKSONVILLE NAS (TOWERS FIELD) (KNIP)
----------------------	-----------------	----------------------	---	--------------	--

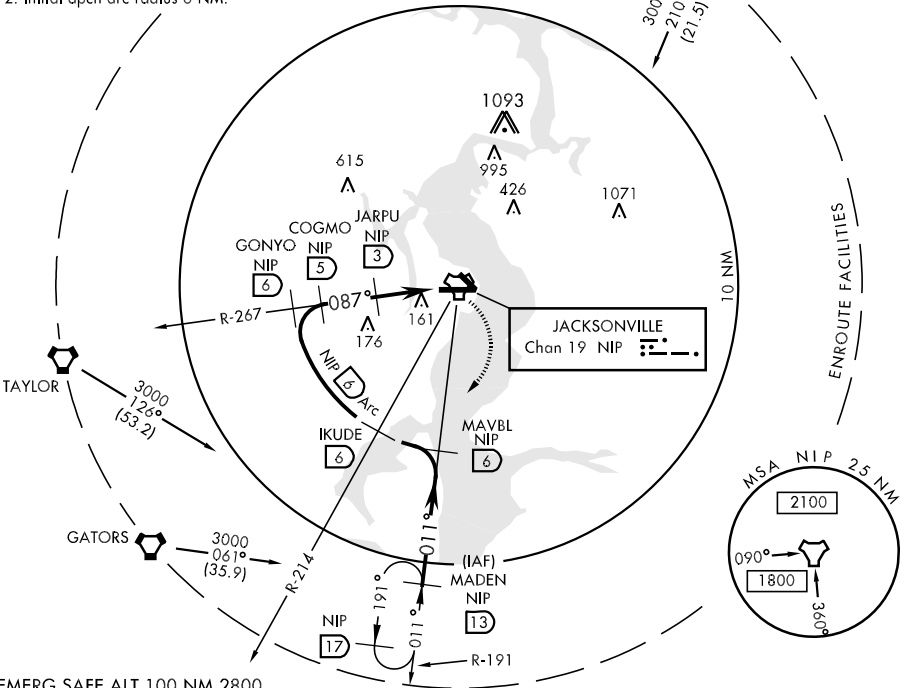
A1 **ALS-F-1** MISSED APPROACH: Climbing right turn to 1800 via NIP R-191 to MADEN and hold.
 *When ALS inop, increase vis CAT ABC to 1 mile, CAT D to 1 1/4 miles.
 **When ALS inop, increase vis CAT ABCD to 1/2 mile.

ATIS 281.0	JACKSONVILLE APP CON 123.8 377.05	NAVY JACKSONVILLE TOWER 120.0 340.2	GND CON 128.6 336.4	CLNC DEL 134.775 353.675	ASR/PAR
-------------------	--	--	----------------------------	---------------------------------	---------

CAUTION:

1. Intmed seg len 1 NM.
2. Initial apch arc radius 6 NM.

NOT FOR CIVIL USE



EMERG SAFE ALT 100 NM 2800

MADEN R-191 (13)	MAVBL R-191 (6)	IKUDE R-214 (6)	GONYO R-267 (6)	COGMO (5)	JARPU (3)	1800 NIP R-191	MADEN	ELEV 20	Rwy 14 ldg 3241'
CATEGORY	A		B		C		D		
S-10 *	420-1/2 400 (400-1/2)				420-3/4 400 (400-3/4)				
CIRCLING	480-1	460	(500-1)		480-1 1/2	580-2			
S-PAR 10 **	120-1/4		100	(100-1/4)		GS 3.00°			

SE-3, 22 OCT 2009 to 19 NOV 2009

SE-3, 22 OCT 2009 to 19 NOV 2009