

JACKSONVILLE, FLORIDA

RNAV (GPS) RWY 10

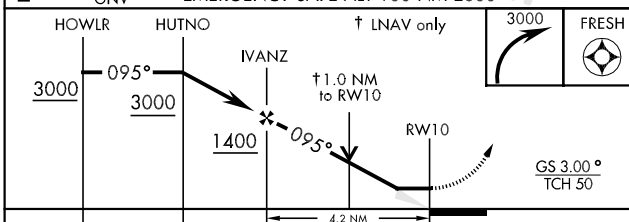
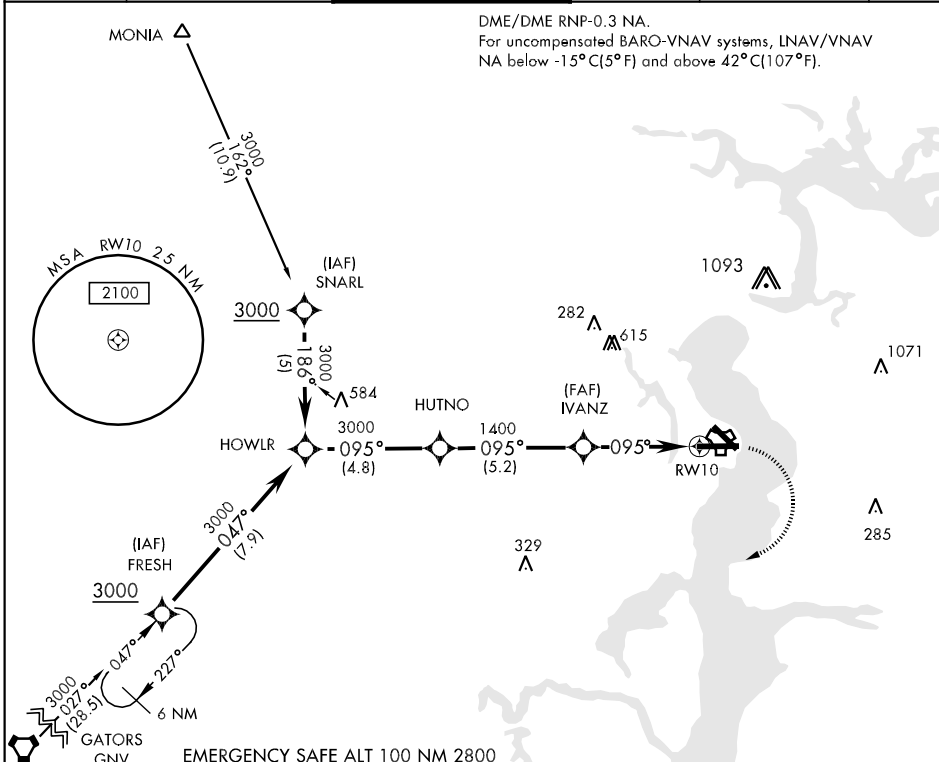
APCH CRS	Rwy ldg	8002
095°	TDZE	20
	Arpt Elev	20

AL-209 [USN] JACKSONVILLE NAS (TOWERS FIELD) (KNIP)

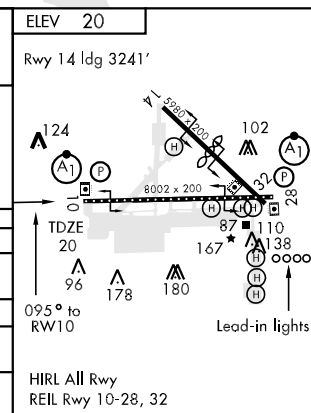
▼ * When ALS inop, increase vis CAT ABCD to 1 mile.
 ** When ALS inop, increase vis CAT ABC to 1 mile, D to 1½ miles.
 *** When ALS inop, increase vis CAT ABCD to ½ mile.

ALSF-1 MISSED APPROACH: Climbing right turn to 3000 direct FRESH and hold.

ATIS	JACKSONVILLE APP CON	NAVY JACKSONVILLE TOWER	GND CON	CLNC DEL	ASR/PAR
281.0	123.8 377.05	120.0 340.2	128.6 336.4	134.775 353.675	



CATEGORY	A	B	C	D
LNAV/VNAV DA*	340-½	320 (400-½)	340-¾	320 (400-¾)
LNAV MDA**	380-½	360 (400-½)	380-¾	360 (400-¾)
CIRCLING	480-1	460 (500-1)	480-1½	580-2
S-PAR 10***	120-¼	100 (100-¼)	GS 3.00°	



SE-3, 22 OCT 2009 to 19 NOV 2009

SE-3, 22 OCT 2009 to 19 NOV 2009

JACKSONVILLE, FLORIDA
 Amdt 1 09183

30° 14'N-81° 41'W JACKSONVILLE NAS (TOWERS FIELD) (KNIP)

RNAV (GPS) RWY 10