

TACAN Chan 19	NIP 087°	APCH CRS	Rwy ldg 8002
			TDZE 20
			Arpt Elev 20

JAL-209 [USN]

JACKSONVILLE NAS (TOWERS FIELD) (KNIP)

▼ \* When ALS inop, increase vis CAT C to 1 mile, CAT D to 1¼ miles, CAT E to 1½ miles.  
 \*\* When ALS inop, increase vis CAT CDE to ½ mile.



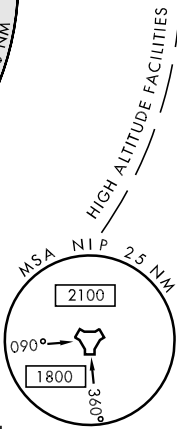
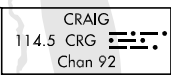
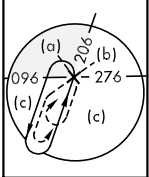
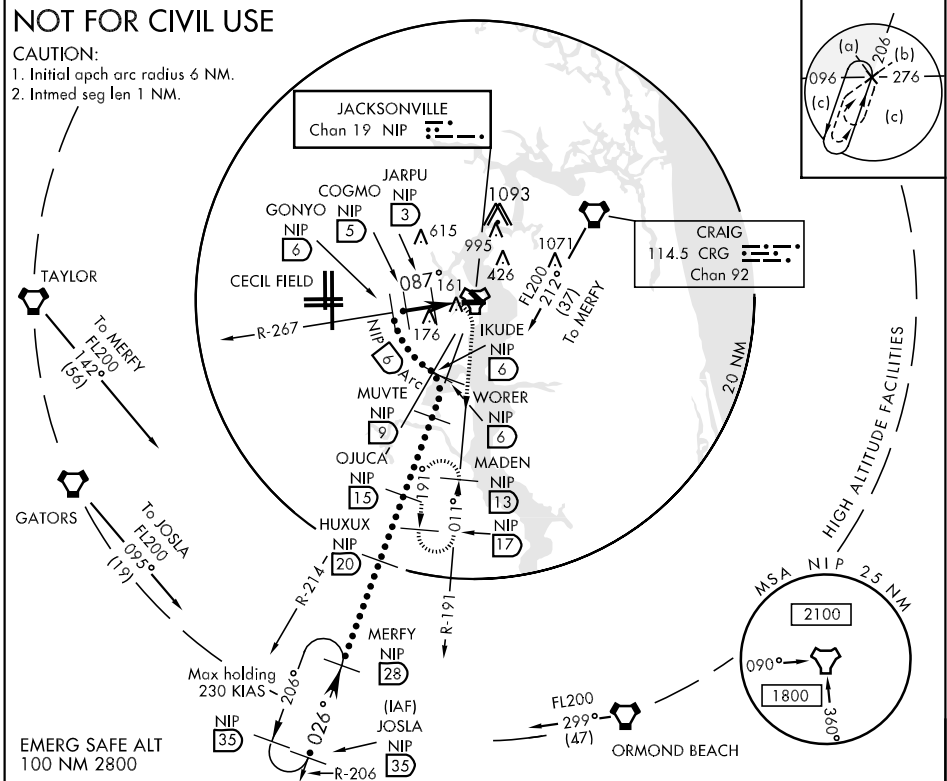
MISSED APPROACH: Climbing right turn to 1800 via NIP TACAN R-191 direct MADEN and hold.

ATIS 281.0	JACKSONVILLE APP CON 123.8 377.05	NAVY JACKSONVILLE TOWER 120.0 340.2	GND CON 128.6 336.4	CLNC DEL 134.775 353.675	ASR/PAR
---------------	--------------------------------------	--	------------------------	-----------------------------	---------

## NOT FOR CIVIL USE

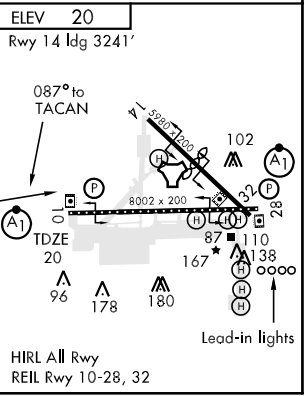
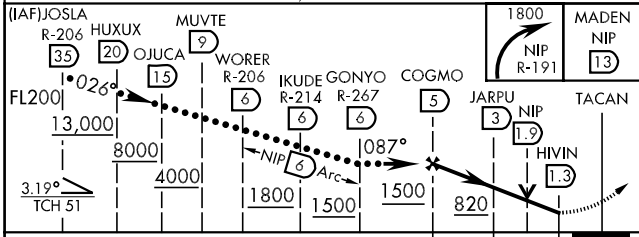
### CAUTION:

1. Initial apch arc radius 6 NM.
2. Inmed seg len 1 NM.



SE-3, 22 OCT 2009 to 19 NOV 2009

SE-3, 22 OCT 2009 to 19 NOV 2009



CATEGORY	C	D	E
S-10*	420-¾	400 (400-¾)	420-1 400 (400-1)
CIRCLING	480-1½ (500-1½)	580-2 (600-2)	860-3 (900-3)
S-PAR 10**	120-¼	100 (100-¼)	GS 3.00°