

VORTAC CRG <b>114.5</b> Chan <b>92</b>	APP CRS <b>132°</b>	Rwy Idg TDZE <b>41</b> Apt Elev <b>41</b>	<b>4008</b>
--	------------------------	---	-------------

# VOR RWY 14

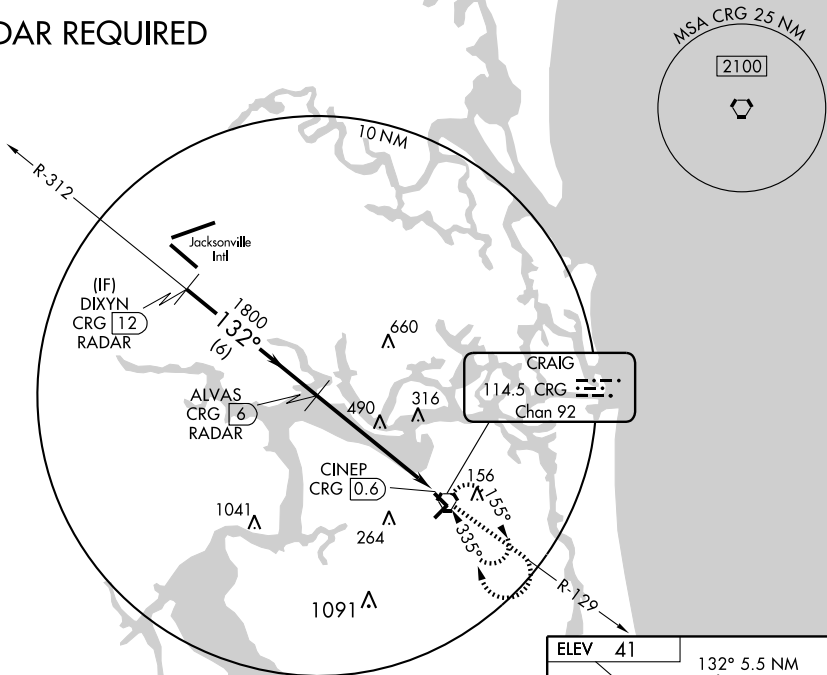
JACKSONVILLE/CRAIG MUNI (CRG)

**⚠** When local altimeter setting not received, use Jacksonville Intl altimeter setting and increase all MDA 40 feet.  
**ASR** DME or RADAR REQUIRED.

MISSED APPROACH: Climb to 2100 via CRG VORTAC R-129 then right turn direct CRG VORTAC and hold.

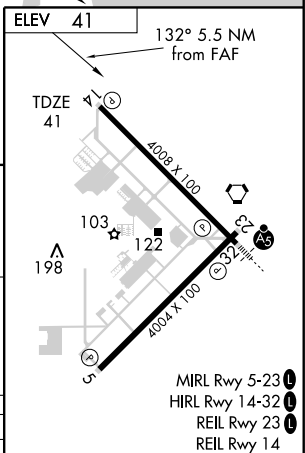
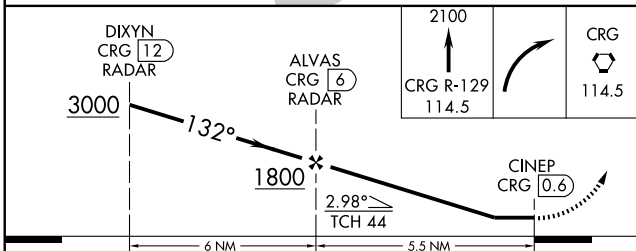
ATIS <b>125.4</b>	JACKSONVILLE APP CON <b>124.9 308.4</b>	CRAIG TOWER ★ <b>132.1(CTAF) 257.625</b>	GND CON <b>121.8</b>	CLNC DEL <b>118.35</b>	UNICOM <b>122.95</b>
----------------------	--	---	-------------------------	---------------------------	-------------------------

## RADAR REQUIRED



SE-3, 22 OCT 2009 to 19 NOV 2009

SE-3, 22 OCT 2009 to 19 NOV 2009



CATEGORY	A	B	C	D
S-14	800-1 759 (800-1)	800-1¼ 759 (800-1¼)	800-2¼ 759 (800-2¼)	800-2½ 759 (800-2½)
CIRCLING	800-1 759 (800-1)	800-1¼ 759 (800-1¼)	800-2¼ 759 (800-2¼)	800-2½ 759 (800-2½)

FAF to MAP 5.5 NM					
Knots	60	90	120	150	180
Min:Sec	5:30	3:40	2:45	2:12	1:50