


WAAS CH <b>57901</b> <b>W32A</b>	APP CRS <b>319°</b>	Rwy Idg TDZE Apt Elev	<b>4008</b> <b>41</b> <b>41</b>
--	------------------------	-----------------------------	---------------------------------------

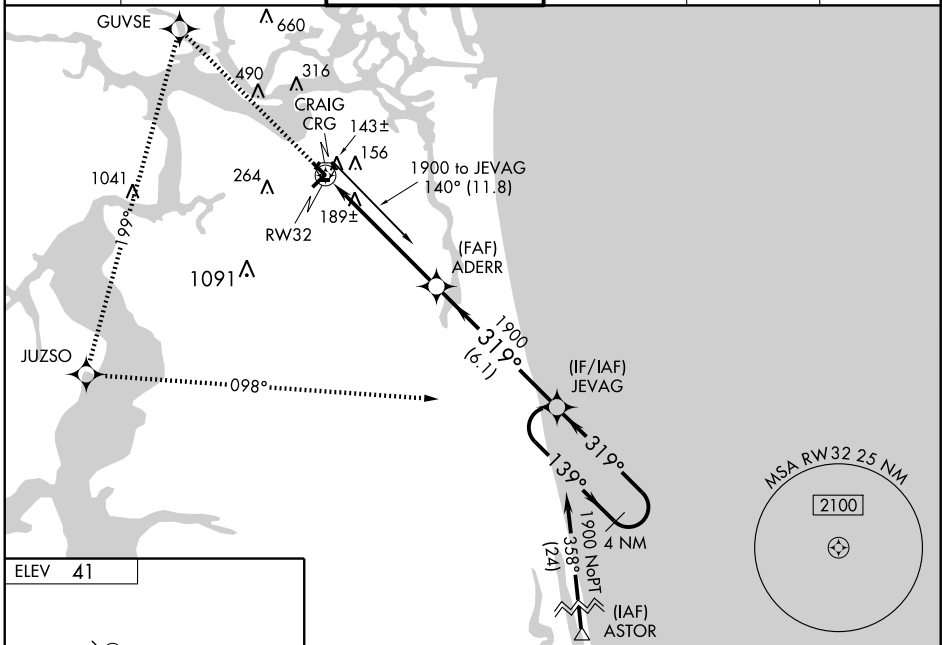
# RNAV (GPS) RWY 32

JACKSONVILLE/CRAIG MUNI (CRG)

**⚠** Baro-VNAV NA when using Jacksonville Intl altimeter setting. For uncompensated Baro-VNAV systems, LNAV/VNAV NA below -15° C (5° F) or above 49° C (120° F). DME/DME RNP-0.3 NA. When local altimeter setting not received, use Jacksonville Intl altimeter setting and increase all DA 32 feet and all MDA 40 feet, LNAV/VNAV all Cats, and LNAV Cat. C visibility 1/4 mile. For inoperative MALSAR, increase LNAV Cat. D visibility to 1/4. For inoperative MALSAR when using Jacksonville Intl altimeter setting, increase LNAV/VNAV all Cats. visibility to 1/4 and LNAV Cat. C visibility to 1/4. VDP NA when using Jacksonville Intl altimeter setting.

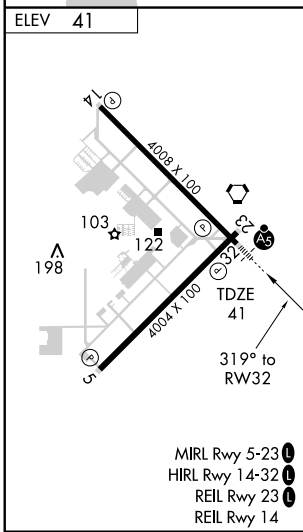
**MALSAR**  MISSED APPROACH: Climb to 3000 direct GUVSE and left turn via 199° track to JUZSO and left turn via 098° track to JEVAG and hold.


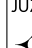
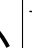

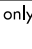

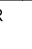
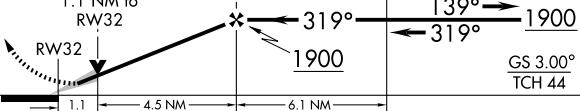
ATIS <b>125.4</b>	JACKSONVILLE APP CON <b>124.9 308.4</b>	CRAIG TOWER ★ <b>132.1(CTAF) 257.625</b>	GND CON <b>121.8</b>	CLNC DEL <b>118.35</b>	UNICOM <b>122.95</b>
----------------------	--	---	-------------------------	---------------------------	-------------------------



SE-3, 22 OCT 2009 to 19 NOV 2009

SE-3, 22 OCT 2009 to 19 NOV 2009



3000	GUVSE 	JUZSO 	JEVAG 	
	 199° TRK	 098° TRK		
*LNAV only. ADERR 1900 JEVAG				
4 NM Holding Pattern				
*1.1 NM to RW32				
				
GS 3.00° TCH 44				
CATEGORY	A	B	C	D
LPV DA		241-1/2	200 (200-1/2)	
LNAV/VNAV DA		479-1	438 (500-1)	
LNAV MDA		440-1/2	399 (400-1/2)	440-1 399 (400-1)
CIRCLING	500-1 459 (500-1)	580-1 539 (600-1)	580-1/2 539 (600-1/2)	600-2 559 (600-2)