

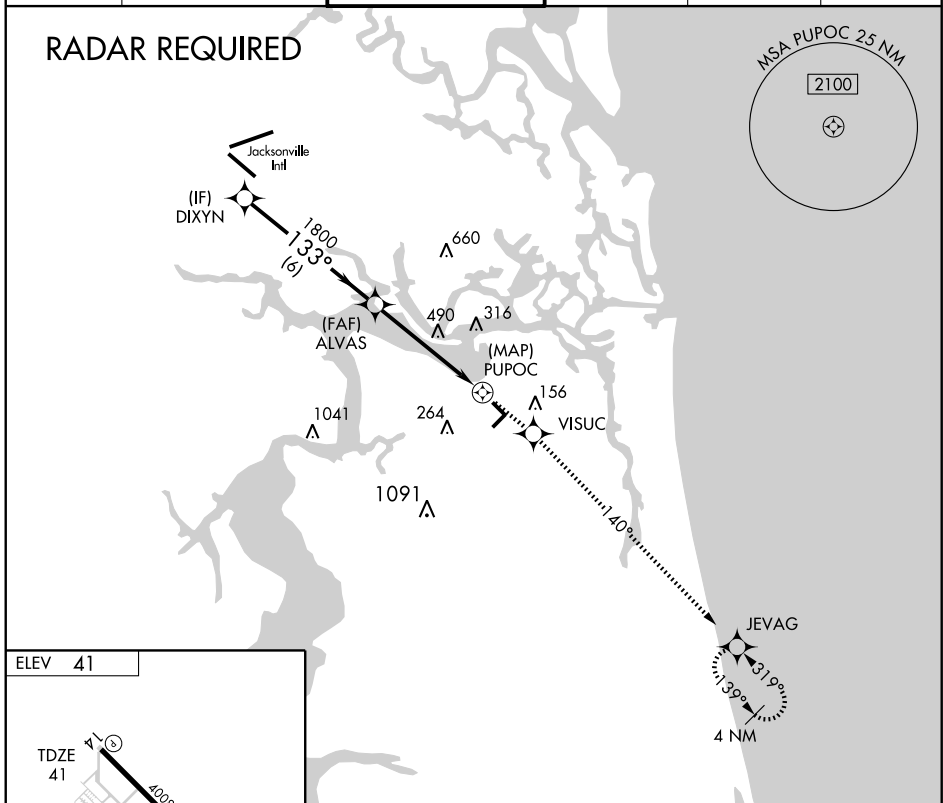
APP CRS	Rwy Idg	4008
133°	TDZE	41
	Apt Elev	41

RNAV (GPS) RWY 14

JACKSONVILLE/CRAIG MUNI (CRG)

⚠ When local altimeter setting not received, use Jacksonville Intl altimeter setting and increase all MDA 40 feet. DME/DME RNP-0.3 NA.
⚠ ASR Visibility reduction by helicopters NA.
 MISSED APPROACH: Climb to 1900 direct VISUC then via 140° track to JEVAG and hold.

ATIS 125.4	JACKSONVILLE APP CON 124.9 308.4	CRAIG TOWER ★ 132.1(CTAF) 257.625	GND CON 121.8	CLNC DEL 118.35	UNICOM 122.95
----------------------	--	---	-------------------------	---------------------------	-------------------------



SE-3, 22 OCT 2009 to 19 NOV 2009

SE-3, 22 OCT 2009 to 19 NOV 2009

