

ILS or LOC RWY 32

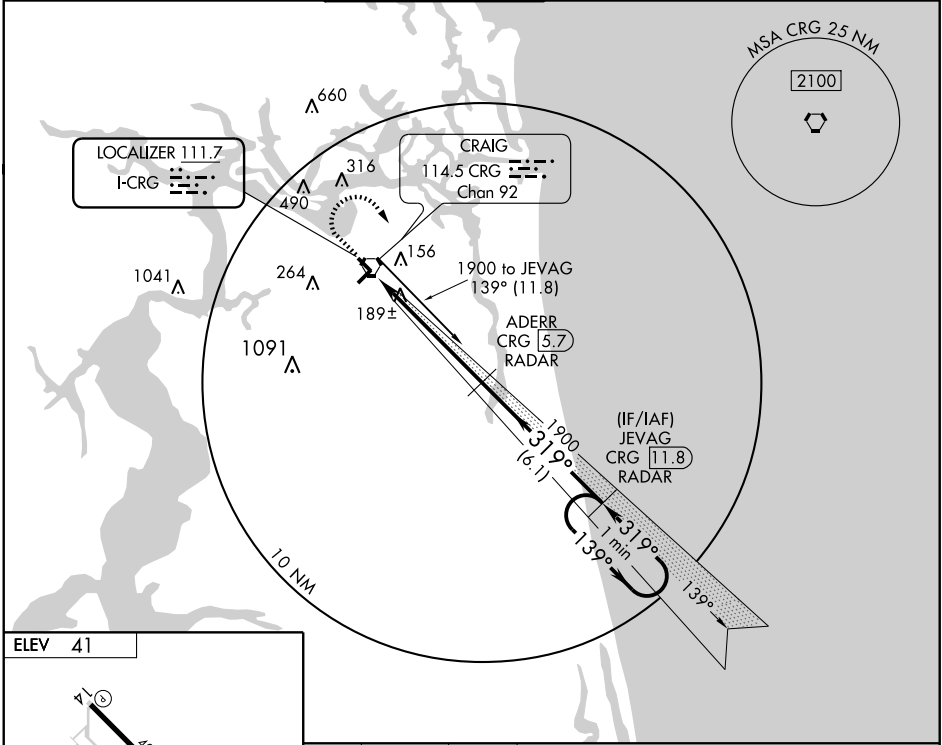
JACKSONVILLE/CRAIG MUNI (CRG)

LOC I-CRG 111.7	APP CRS 319°	Rwy Idg TDZE Apt Elev	4008 41 41
---------------------------	------------------------	-----------------------------	---------------------------------------

▽ When local altimeter setting not received, use Jacksonville Intl altimeter setting and increase all DA to 273, all MDA 40 feet and increase S-LOC Cats. C and D visibility ¼ mile.
△ DME or RADAR REQUIRED.

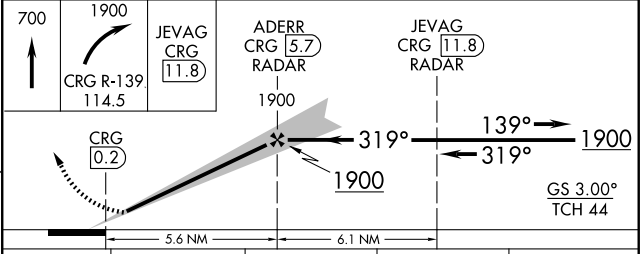
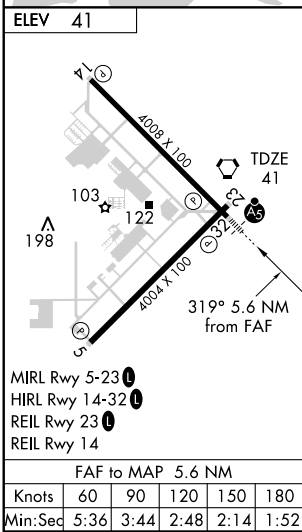
MALSR
 MALSR
MISSED APPROACH: Climb to 700 then climbing right turn to 1900 via CRG VORTAC R-139 to JEVAG/CRG 11.8 DME/RADAR and hold.

ATIS 125.4	JACKSONVILLE APP CON 124.9 308.4	CRAIG TOWER ★ 132.1(CTAF) 257.625	GND CON 121.8	CLNC DEL 118.35	UNICOM 122.95
----------------------	--	---	-------------------------	---------------------------	-------------------------



SE-3, 22 OCT 2009 to 19 NOV 2009

SE-3, 22 OCT 2009 to 19 NOV 2009



CATEGORY	A	B	C	D
S-ILS 32	241-½ 200 (200-½)			
S-LOC 32	440-½ 399 (400-½)		440-¾ 399 (400-¾)	
CIRCLING	500-1 459 (500-1)	580-1 539 (600-1)	580-½ 539 (600-½)	600-2 559 (600-2)