

RNAV (GPS) RWY 34

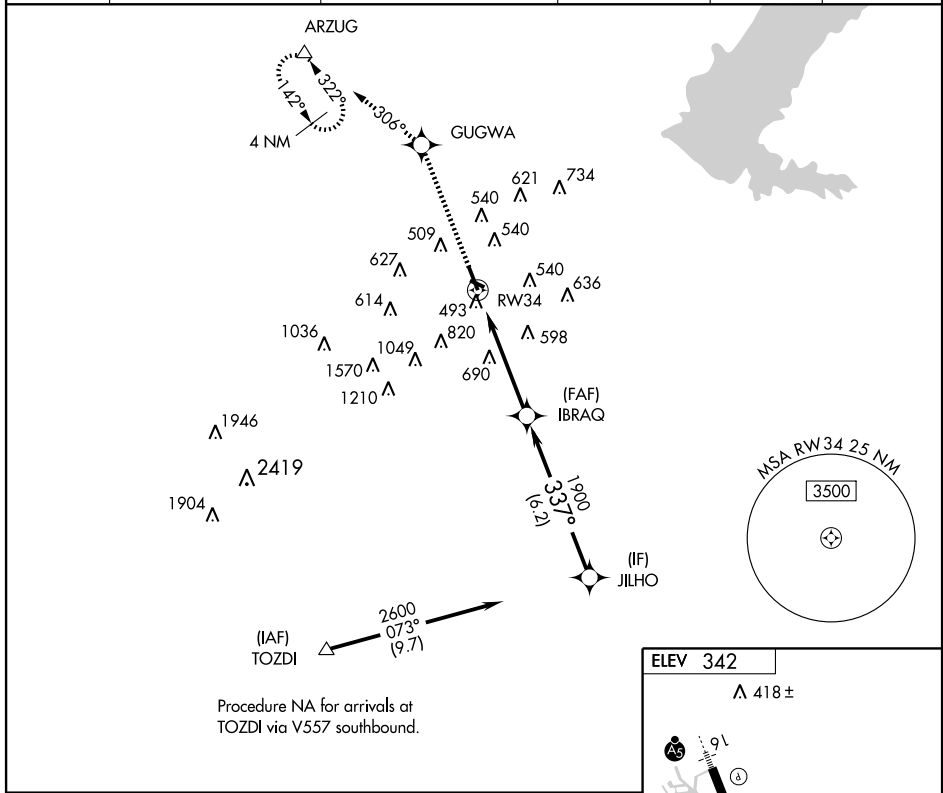
JACKSON/HAWKINS FIELD (HKS)

APP CRS 337°	Rwy Idg 5387 TDZE 322 Apt Elev 342
------------------------	---

⚠ DME/DME RNP-0.3 NA. Visibility reduction by helicopters NA. When local altimeter setting not received, use Jackson-Evers Intl altimeter setting and increase all MDAs 20 feet.

MISSED APPROACH: Climb to 1800 direct GUGWA then climbing left turn to 3000 via 306° track to ARZUG and hold.

ASOS 120.625	JACKSON APP CON * 123.9 125.25 319.2	HAWKINS TOWER * 119.65 (CTAF) 257.8	GND CON 121.9 239.0	CLNC DEL 121.9	UNICOM 122.95
------------------------	--	---	-------------------------------	--------------------------	-------------------------



SC-4, 22 OCT 2009 to 19 NOV 2009

SC-4, 22 OCT 2009 to 19 NOV 2009

1800	GUGWA	3000	ARZUG	JILHO
↑	✧	↘	△	
		TRK 306°		
			IBRAQ	2600
			337°	Procedure Turn NA
			1900	
			3.04°	
			TCH 40	
			4.8 NM	6.2 NM
CATEGORY	A	B	C	D
RNAV MDA	940-1 618 (600-1)		940-1 618 (600-1 3/4)	940-2 618 (600-2)
CIRCLING	940-1 598 (600-1)		940-1 598 (600-1 3/4)	940-2 598 (600-2)

