

RNAV (GPS) Y RWY 5R

INDIANAPOLIS INTL (IND)

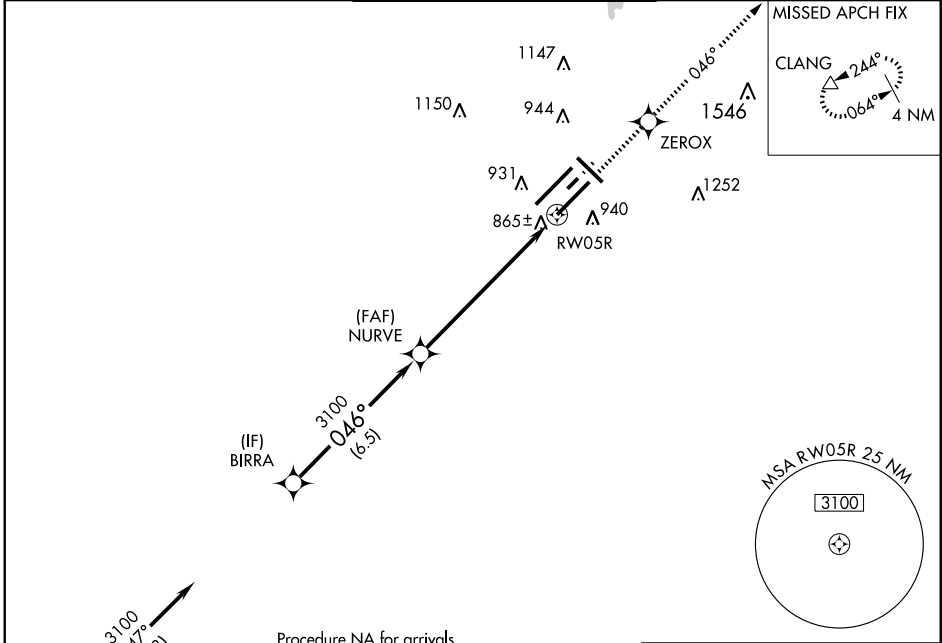
WAAS CH 50306 W05B	APP CRS 046°	Rwy Idg 10000 TDZE 791 Apt Elev 797
--	------------------------	--

▼ For inoperative ALSF, increase LPV all Cats visibility to RVR 6000. For uncompensated Baro-VNAV systems, LNAV/VNAV NA below -16°C (4°F) or above 47°C (116°F). DME/DME RNP-0.3 NA.

ALSF-2
A

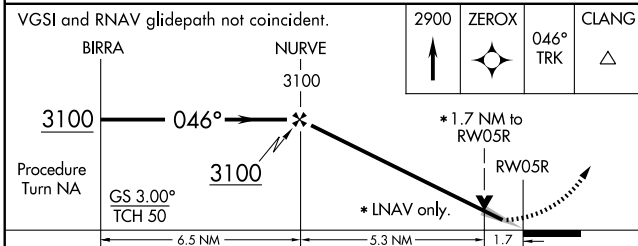
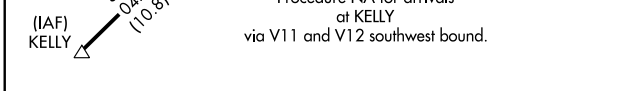
MISSED APPROACH: Climb to 2900 direct ZEROX and via 046° track to CLANG and hold.

ATIS 134.25	INDIANAPOLIS APP CON 119.3 317.8	INDY TOWER (5R/23L, 14/32) 120.9 257.8 (5L/23R) 127.82 257.8	GND CON 121.9 257.8	CLNC DEL 128.75 257.8
-----------------------	--	--	-------------------------------	---------------------------------



EC-2, 22 OCT 2009 to 19 NOV 2009

EC-2, 22 OCT 2009 to 19 NOV 2009



CATEGORY	A	B	C	D
LPV DA	1137/40		346 (400-¾)	
LNAV/VNAV DA	1220/50		429 (500-1)	
LNAV MDA	1400/24 609 (700-½)		1400/60 609 (700-¼)	1400-1½ 609 (700-1½)
CIRCLING	1420-1 623 (700-1)		1420-1¾ 623 (700-¾)	1420-2 623 (700-2)

