

RNAV (GPS) Y RWY 5L

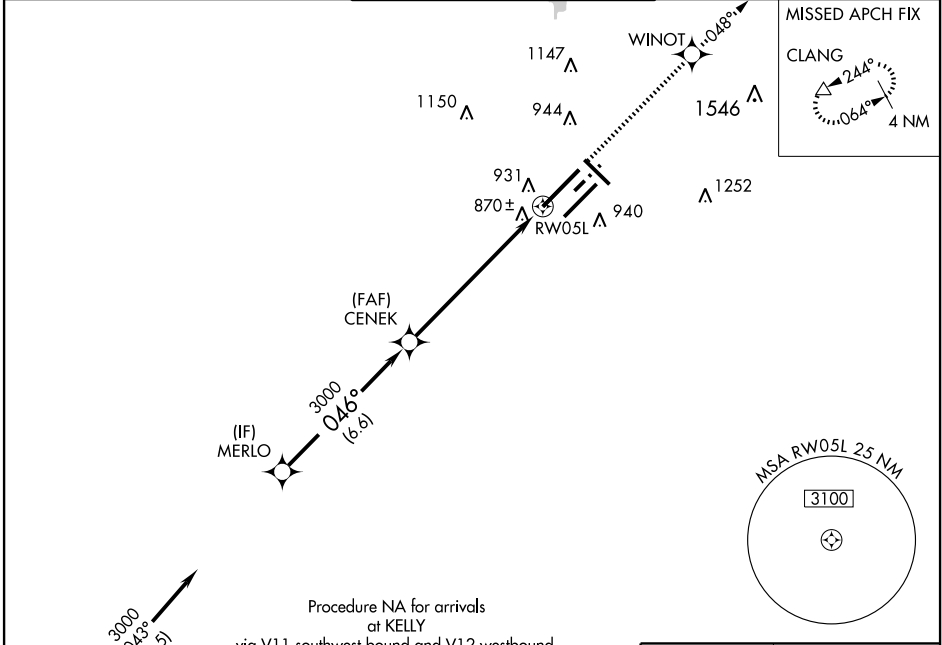
INDIANAPOLIS INTL (IND)

WAAS CH 45706 W05A	APP CRS 046°	Rwy Idg TDZE 748 Apt Elev 797	11200
--	------------------------	---	--------------

▼ For inoperative ALSF, increase LPV all Cats visibility to RVR 6000.
For uncompensated Baro-VNAV systems, LNAV/VNAV NA below -16°C (4°F) or above 47°C (116°F). DME/DME RNP-0.3 NA.

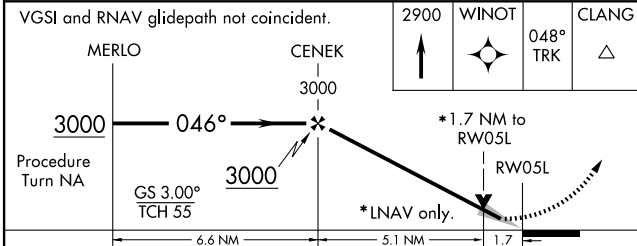
ALSF-2 MISSED APPROACH: Climb to 2900 direct WINOT and via 048° track to CLANG and hold.

ATIS 134.25	INDIANAPOLIS APP CON 119.3 317.8	INDY TOWER (5R/23L, 14/32) 120.9 257.8 (5L/23R) 127.82 257.8	GND CON 121.9 257.8	CLNC DEL 128.75 257.8
-----------------------	--	--	-------------------------------	---------------------------------

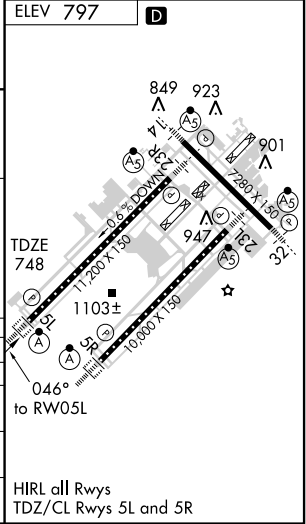


VGSI and RNAV glidepath not coincident.

2900	WINOT	048° TRK	CLANG
------	-------	----------	-------



CATEGORY	A	B	C	D
LPV DA	1104/40 356 (400-¾)			
LNAV/VNAV DA	1283-1½ 535 (500-1½)			
LNAV MDA	1360/24 612 (600-½)	1360/60 612 (600-1¼)	1360-1½ 612 (600-1½)	
CIRCLING	1420-1 623 (700-1)	1420-1¾ 623 (700-¾)	1420-2 623 (700-2)	



EC-2, 22 OCT 2009 to 19 NOV 2009

EC-2, 22 OCT 2009 to 19 NOV 2009