


# RNAV (GPS) Y RWY 23R

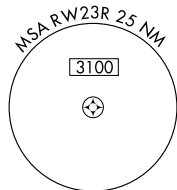
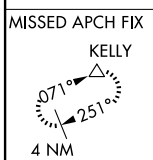
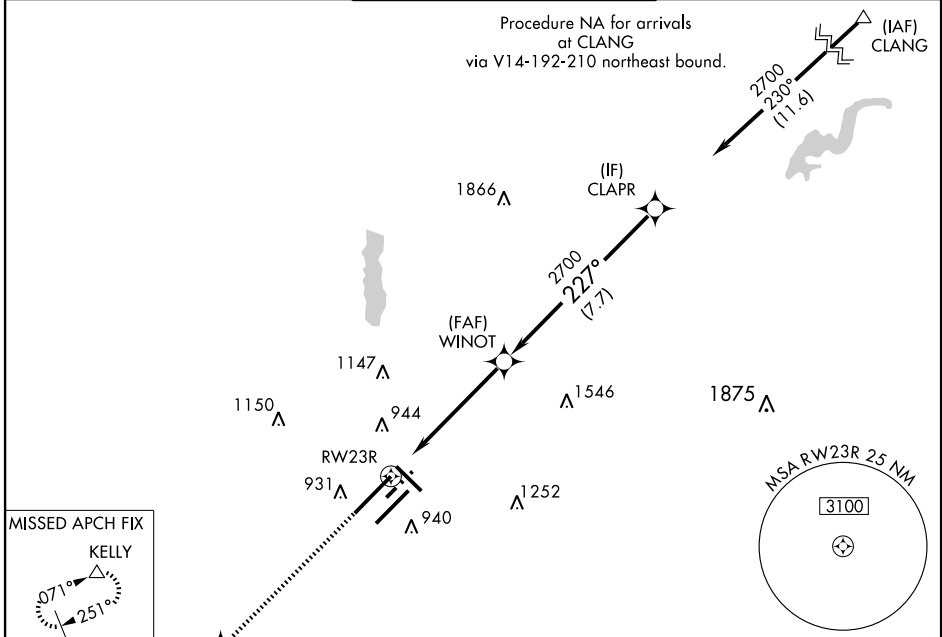
INDIANAPOLIS INTL (IND)






WAAS CH <b>77706</b> <b>W23B</b>	APP CRS <b>227°</b>	Rwy Idg <b>11200</b> TDZE <b>783</b> Apt Elev <b>797</b>
--	------------------------	--

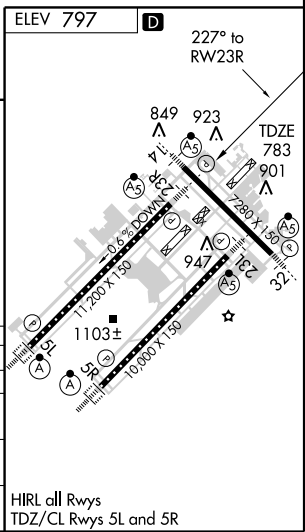
**▽** For inoperative MALSR, increase LPV all Cts visibility to RVR 6000.  
For uncompensated Baro-VNAV systems, LNAV/VNAV NA below -16°C (4°F) or above 47°C (116°F). DME/DME RNP-0.3 NA.

**MALSR**  MISSED APPROACH: Climb to 3100 direct CENEK and via 224° track to KELLY and hold.

ATIS <b>134.25</b>	INDIANAPOLIS APP CON <b>119.3 317.8</b>	INDY TOWER (5R/23L, 14/32) <b>120.9 257.8</b> (5L/23R) <b>127.82 257.8</b>	GND CON <b>121.9 257.8</b>	CLNC DEL <b>128.75 257.8</b>
-----------------------	--	--	-------------------------------	---------------------------------



3100	CENEK	KELLY	WINOT	CLAPR
				
	TRK 224°		2700	2700
	*1.2 NM to RWY23R		227°	Procedure Turn NA
	*LNAV only.		2700	GS 3.00°
			VGSI and RNAV glidepath not coincident.	TCH 55
	1.2	4.6 NM	7.7 NM	
CATEGORY	A	B	C	D
LPV DA	1172/40 389 (400-¾)			
LNAV/VNAV DA	1242/50 459 (500-1)			
LNAV MDA	1220/24	437 (500-½)	1220/40 437 (500-¾)	1220/50 437 (500-1)
CIRCLING	1420-1	623 (700-1)	1420-1¾ 623 (700-1¾)	1420-2 623 (700-2)



EC-2, 22 OCT 2009 to 19 NOV 2009

EC-2, 22 OCT 2009 to 19 NOV 2009