

RNAV (GPS) Y RWY 23L

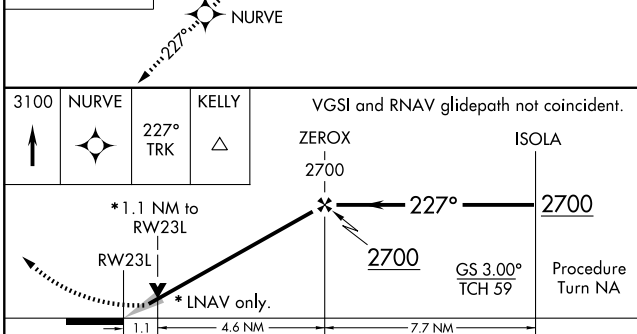
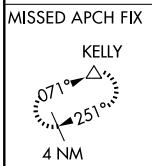
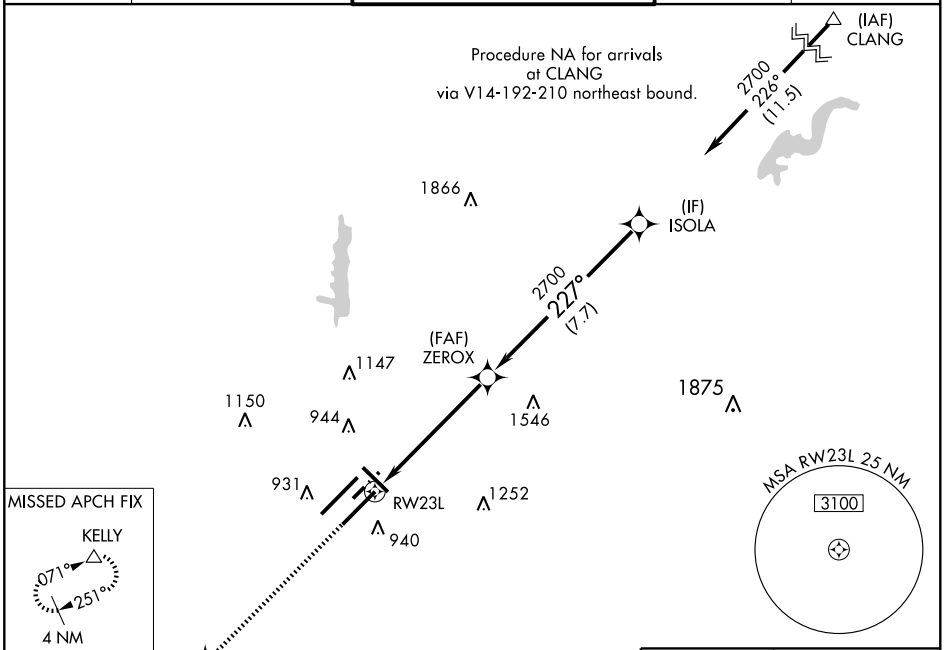
INDIANAPOLIS INTL (IND)

WAAS CH 86406 W23A	APP CRS 227°	Rwy Idg 10000 TDZE 790 Apt Elev 797
--	------------------------	--

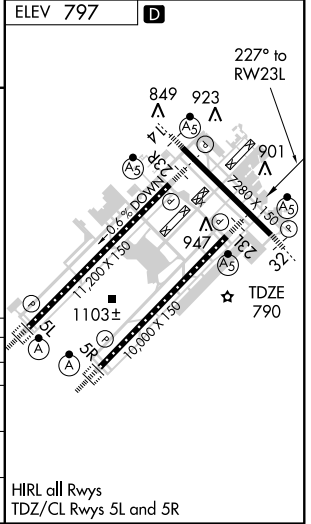
▼ For inoperative MALSRS, increase LPV all Cats visibility to RVR 5000. For uncompensated Baro-VNAV systems, LNAV/VNAV NA below -16°C (4°F) or above 47°C (116°F). DME/DME RNP-0.3 NA.

MALSRS MISSED APPROACH: Climb to 3100 direct NURVE and via 227° track to KELLY and hold.

ATIS 134.25	INDIANAPOLIS APP CON 119.3 317.8	INDY TOWER (5R/23L, 14/32) 120.9 257.8 (5L/23R) 127.82 257.8	GND CON 121.9 257.8	CLNC DEL 128.75 257.8
-----------------------	--	--	-------------------------------	---------------------------------



CATEGORY	A	B	C	D
LPV DA	1093/24 303 (300-½)			
LNAV/VNAV DA	1203/50 413 (500-1)			
LNAV MDA	1220/24 430 (500-½)	1220/40 430 (500-¾)	1220/50 430 (500-1)	
CIRCLING	1420-1 623 (700-1)	1420-1¾ 623 (700-1¾)	1420-2 623 (700-2)	



EC-2, 22 OCT 2009 to 19 NOV 2009

EC-2, 22 OCT 2009 to 19 NOV 2009