

RNAV (RNP) Z RWY 5R

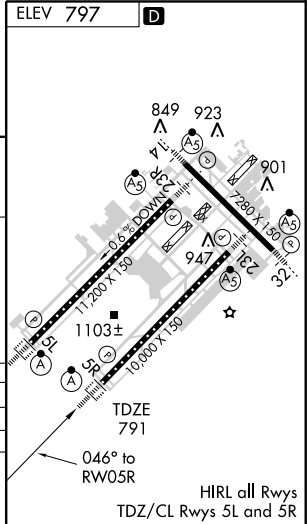
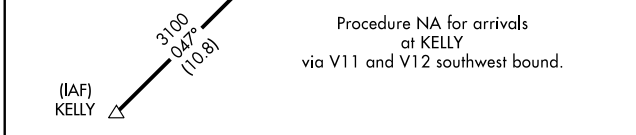
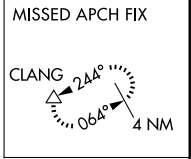
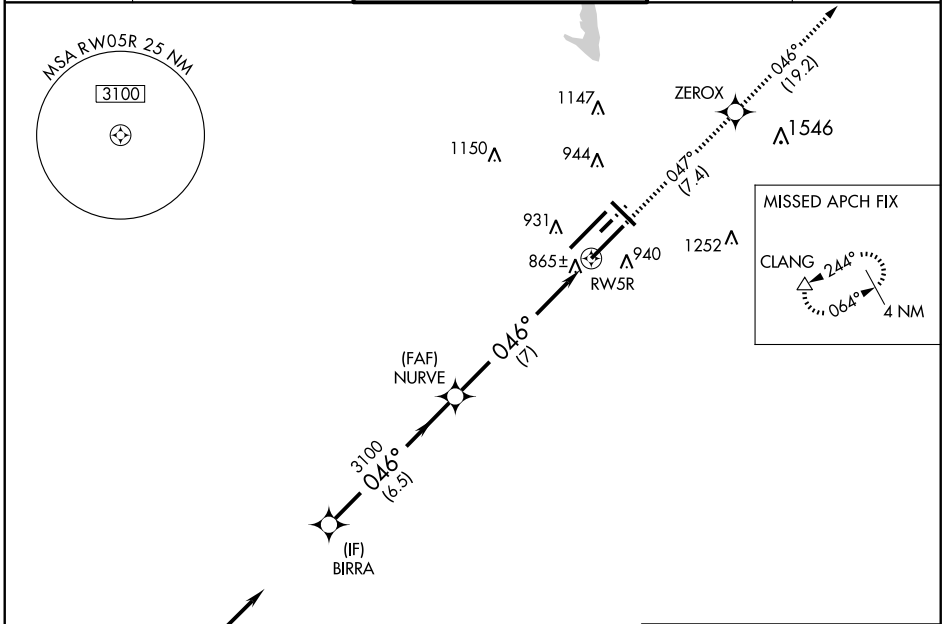
INDIANAPOLIS INTL (IND)

| | | |
|-------------|----------|--------------|
| APP CRS | Rwy Idg | 10000 |
| 046° | TDZE | 791 |
| | Apt Elev | 797 |

NA GPS Required. For uncompensated Baro-VNAV systems, procedure NA below -16°C (4°F) or above 47°C (116°F). For inoperative ALSF, increase RNP 0.30 and RNP 0.19 visibility to 1 1/2 mile. Visibility reduction by helicopters NA.

ALSF-2
 MISSED APPROACH: Climb to 2900 via 047° track to ZEROX and 046° track to CLANG and hold.

| | | | | |
|-----------------------|--|--|-------------------------------|---------------------------------|
| ATIS 134.25 | INDIANAPOLIS APP CON 119.3 317.8 | INDY TOWER (5R/23L, 14/32) 120.9 257.8 (5L/23R) 127.82 257.8 | GND CON 121.9 257.8 | CLNC DEL 128.75 257.8 |
|-----------------------|--|--|-------------------------------|---------------------------------|



| | | | | |
|-------------|---|---------|-------------|---|
| CATEGORY | A | B | C | D |
| RNP 0.19 DA | | 1190/50 | 399 (400-1) | |
| RNP 0.30 DA | | 1219/50 | 428 (500-1) | |

SPECIAL AIRCRAFT AND AIRCREW AUTHORIZATION REQUIRED

EC-2, 22 OCT 2009 to 19 NOV 2009

EC-2, 22 OCT 2009 to 19 NOV 2009