

RNAV (RNP) Z RWY 5L

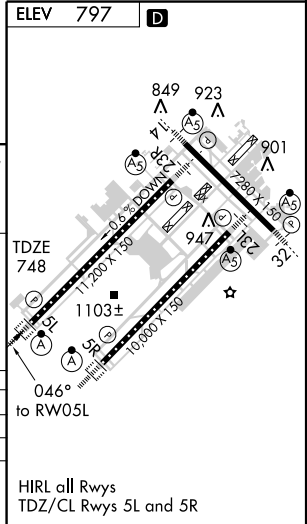
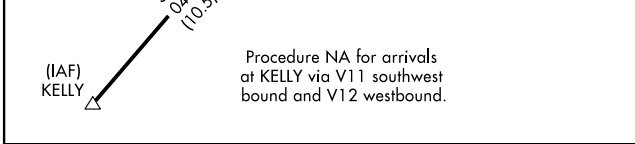
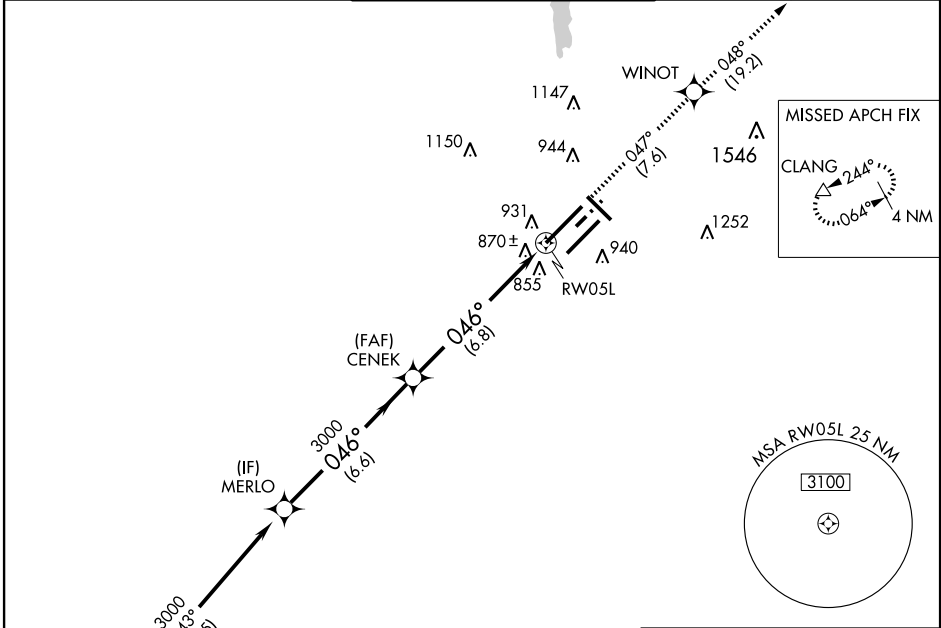
INDIANAPOLIS INTL (IND)

APP CRS	Rwy Idg	11200
046°	TDZE	748
	Apt Elev	797

GPS Required. For uncompensated Baro-VNAV systems, procedure NA below -16°C (4°F) or above 47°C (116°F). For inoperative ALSF, increase RNP 0.15 visibility to RVR 6000, and RNP 0.30 visibility to 1 3/4 mile.

ALSF-2
 MISSED APPROACH: Climb to 2900 via 047° track to WINOT and 048° track to CLANG and hold.

ATIS	INDIANAPOLIS APP CON	INDY TOWER	GND CON	CLNC DEL
134.25	119.3 317.8	(5R/23L, 14/32) 120.9 257.8 (5L/23R) 127.82 257.8	121.9 257.8	128.75 257.8



3000	046°	3000	WINOT	048°	CLANG
Procedure Turn NA		GP 3.00° TCH 55			
	6.6 NM		6.8 NM		

CATEGORY	A	B	C	D
RNP 0.15 DA		1139/50	391 (400-1)	
RNP 0.30 DA		1215/60	467 (500-1 1/4)	

SPECIAL AIRCRAFT AND AIRCREW AUTHORIZATION REQUIRED

EC-2, 22 OCT 2009 to 19 NOV 2009

EC-2, 22 OCT 2009 to 19 NOV 2009