

RNAV (RNP) Z RWY 32

INDIANAPOLIS INTL (IND)

APP CRS	Rwy Idg	7280
317°	TDZE	792
	Apt Elev	797

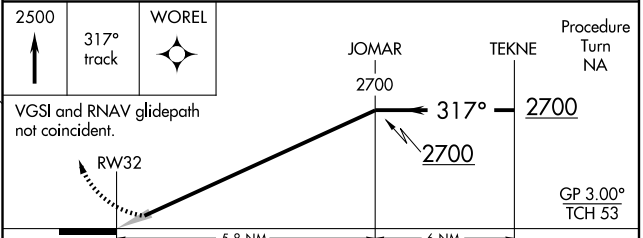
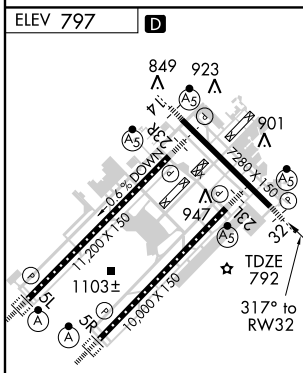
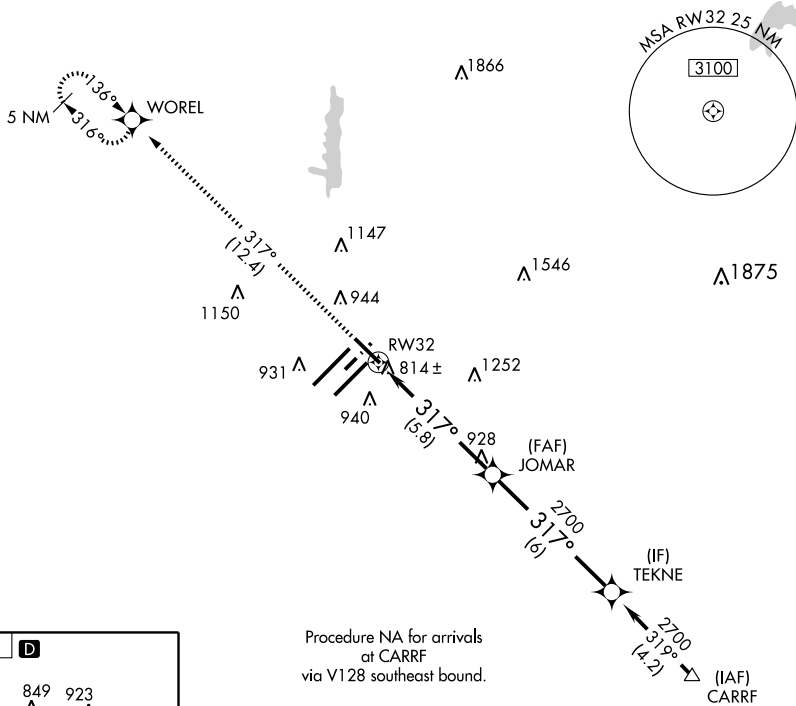
GPS Required. For uncompensated Baro-VNAV systems, procedure NA below -16°C (4°F) or above 47°C (116°F). For operative MALSR, increase RNP 0.19 visibility to RVR 5000 and RNP 0.30 visibility to 1½.

MISSED APPROACH: Climb to 2500 via 317° track to WOREL and hold.

ATIS	INDIANAPOLIS APP CON	INDY TOWER	GND CON	CLNC DEL
134.25	119.3 317.8	(5R/23L, 14/32) 120.9 257.8 (5L/23R) 127.82 257.8	121.9 257.8	128.75 257.8

EC-2, 22 OCT 2009 to 19 NOV 2009

EC-2, 22 OCT 2009 to 19 NOV 2009



CATEGORY	A	B	C	D
RNP 0.19 DA		1090/24	298 (300-½)	
RNP 0.30 DA		1186/50	394 (400-1)	

SPECIAL AIRCRAFT AND AIRCREW AUTHORIZATION REQUIRED