


RNAV (RNP) Z RWY 23R

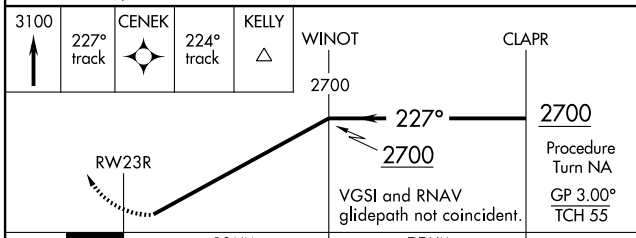
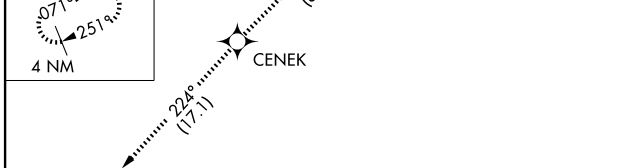
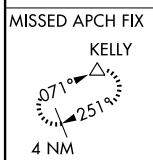
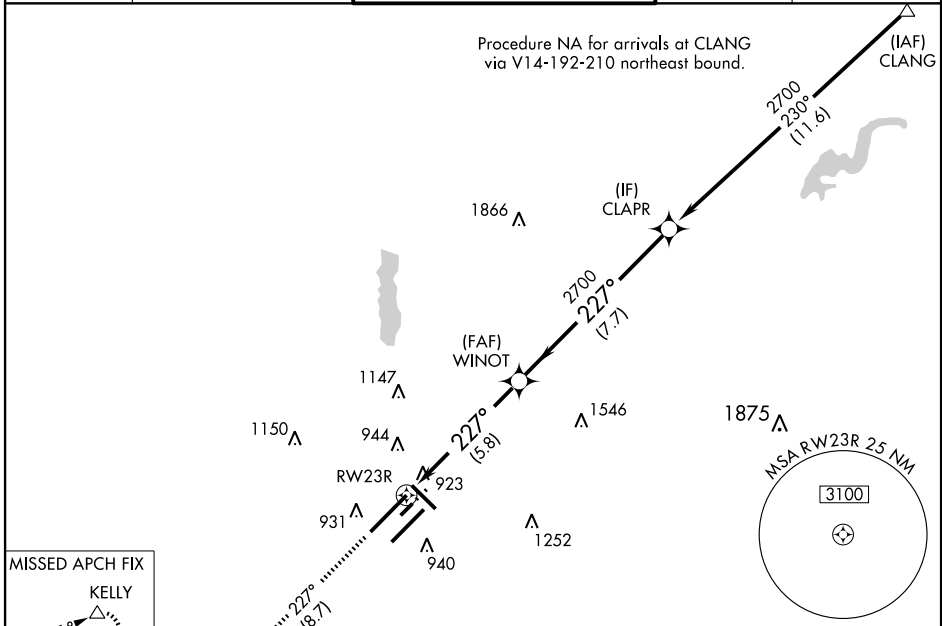
INDIANAPOLIS INTL (IND)

APP CRS 227°	Rwy Idg 11200
	TDZE 783
	Apt Elev 797

GPS Required. For uncompensated Baro-VNAV systems, procedure NA below -16°C (4°F) or above 47°C (116°F). For inoperative MALS, increase RNP 0.30 visibility to 1½ mile.

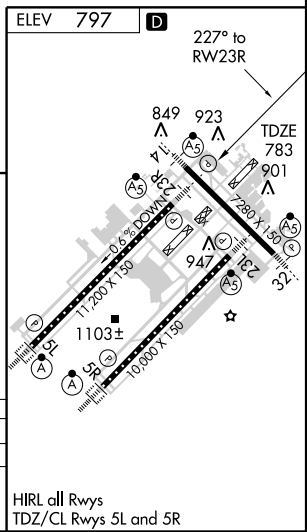
MALS

MISSED APPROACH: Climb to 3100 via 227° track to CENEK and via 224° track to KELLY and hold.

ATIS 134.25	INDIANAPOLIS APP CON 119.3 317.8	INDY TOWER (5R/23L, 14/32) 120.9 257.8 (5L/23R) 127.82 257.8	GND CON 121.9 257.8	CLNC DEL 128.75 257.8
-----------------------	--	--	-------------------------------	---------------------------------



CATEGORY	A	B	C	D
RNP 0.30 DA	1 220/50 437 (500-1)			

SPECIAL AIRCRAFT AND AIRCREW AUTHORIZATION REQUIRED



EC-2, 22 OCT 2009 to 19 NOV 2009

EC-2, 22 OCT 2009 to 19 NOV 2009

HIRL all Rwys
 TDZ/CL Rwys 5L and 5R