

(ROCKY4.ROCKY) 08325
ROCKY FOUR DEPARTURE

SL-203 (FAA)

INDIANAPOLIS INTL (IND)
 INDIANAPOLIS, INDIANA

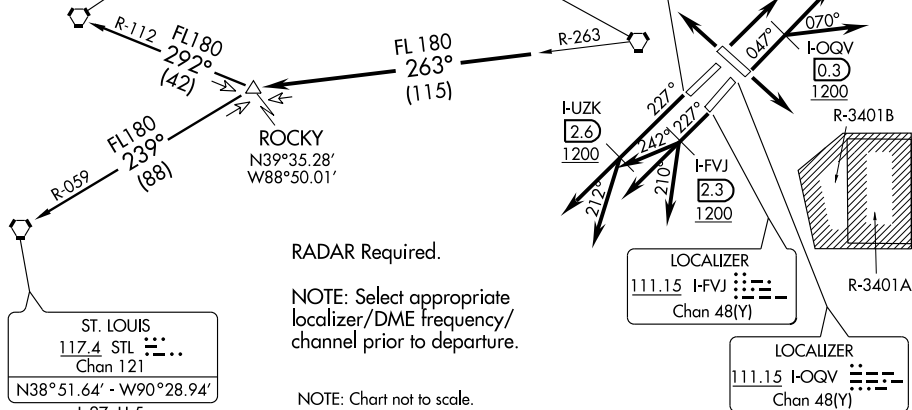
ATIS 134.25
 CLNC DEL
 128.75 257.8
 GND CON
 121.8 257.8 (23R/5L)
 121.9 257.8 (23L/5R)
 INDY TOWER
 127.82 257.8 (23R/ 5L)
 120.9 257.8 (23L/5R)
 INDIANAPOLIS DEP CON
 124.95 317.8 (048 CW 227)
 119.05 317.8 (228 CW 047)

TAKE-OFF MINIMUMS: Rwy 5R,
 5L, 14, 23R, 23L, 32 STANDARD.

SPINNER
 112.7 SPI
 Chan 74
 N39°50.38' - W89°40.66'
 L-27, H-5

BRICKYARD
 116.3 VHP
 Chan 110

LOCALIZER
 111.75 I-UZK
 Chan 54(Y)



EC-2, 22 OCT 2009 to 19 NOV 2009

EC-2, 22 OCT 2009 to 19 NOV 2009

DEPARTURE ROUTE DESCRIPTION

TAKE-OFF RWY 23R (TURBOJETS ONLY): Climb on runway heading 227° until I-UZK 2.6 DME and 1200 feet or above, then fly assigned heading 227° or 212°. Maintain 5000 feet. Expect radar vectors to join VHP R-263 to ROCKY INT then via transition or assigned route. Expect clearance to requested altitude ten minutes after departure.

TAKE-OFF RWY 23L (TURBOJETS ONLY): Climb on runway heading 227° until I-FVJ 2.3 DME and 1200 feet or above, then fly assigned heading 210°, 227°, or 242°. Maintain 5000 feet. Expect radar vectors to join VHP R-263 to ROCKY INT then via transition or assigned route. Expect clearance to requested altitude ten minutes after departure.

TAKE-OFF RWY 5R (TURBOJETS ONLY): Climb on runway heading 047° until I-OQV 0.3 DME and 1200 feet or above, then fly assigned heading 047° or 070°. Maintain 5000 feet. Expect radar vectors to join VHP R-263 to ROCKY INT then via transition or assigned route. Expect clearance to requested altitude ten minutes after departure.

TAKE-OFF ALL OTHER RUNWAYS (TURBOJETS ONLY): Climb on runway heading or as assigned. Maintain 5000 feet. Expect radar vectors to join VHP R-263 to ROCKY INT then via transition or assigned route. Expect clearance to requested altitude ten minutes after departure.

TAKE-OFF ALL RUNWAYS (PROPELLER ONLY): Climb on runway heading or as assigned. Maintain 3000 feet. Expect radar vectors to join VHP R-263 to ROCKY INT then via transition or assigned route. Expect clearance to requested altitude ten minutes after departure.

SPINNER TRANSITION (ROCKY4.SPI): From over ROCKY INT via SPI R-112 to SPI VORTAC.

ST. LOUIS TRANSITION (ROCKY4.STL): From over ROCKY INT via STL R-059 to STL VORTAC.

(ROCKY4.ROCKY) 08325
ROCKY FOUR DEPARTURE

INDIANAPOLIS, INDIANA
 INDIANAPOLIS INTL (IND)