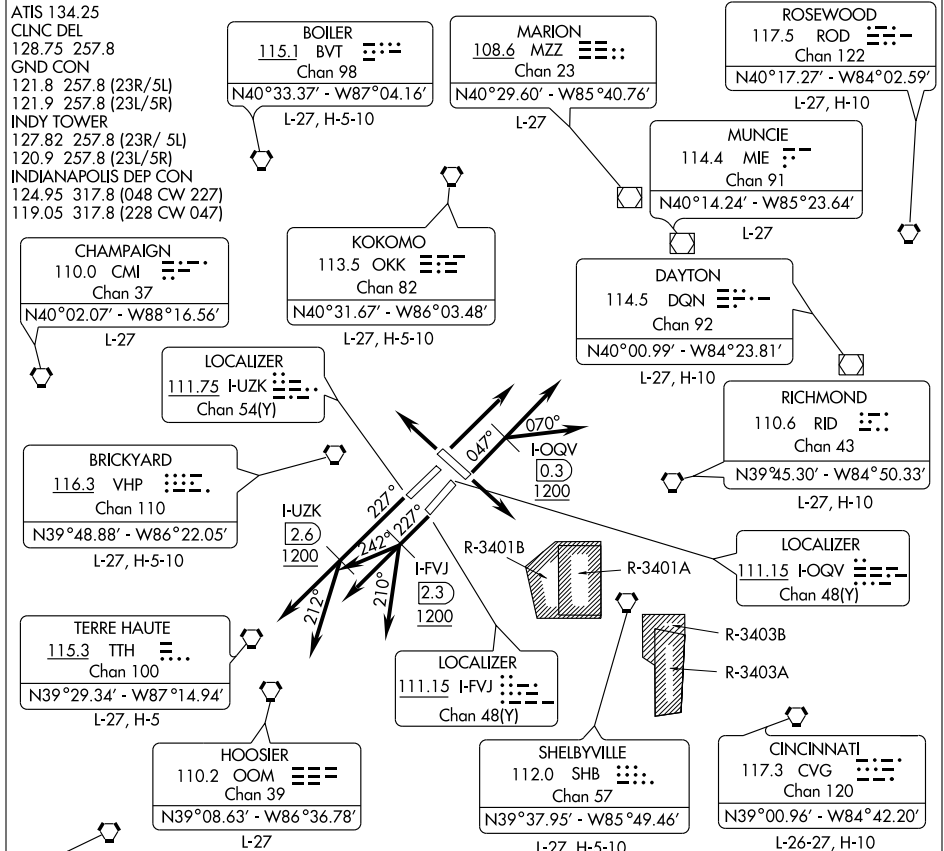


INDY TWO DEPARTURE



NOTE: Chart not to scale.

TAKE-OFF MINIMUMS: Rwy 5R,
5L, 14, 23R, 23L, 32 STANDARD
RADAR Required.

NOTE: TURBOJET ONLY
NOTE: Select appropriate
localizer/DME frequency/
channel prior to departure.

DEPARTURE ROUTE DESCRIPTION

- TAKE-OFF RWY 23R:** Climb on runway heading 227° until I-UZK 2.6 DME and 1200 feet or above, then fly assigned heading 227° or 212°. Maintain 5000 feet. Expect radar vectors to assigned route/fix. Expect clearance to requested altitude ten minutes after departure.
- TAKE-OFF RWY 23L:** Climb on runway heading 227° until I-FVJ 2.3 DME and 1200 feet or above, then fly assigned heading 210°, 227°, or 242°. Maintain 5000 feet. Expect radar vectors to assigned route/fix. Expect clearance to requested altitude ten minutes after departure.
- TAKE-OFF RWY 5R:** Climb on runway heading 047° until I-OGV 0.3 DME and 1200 feet or above, then fly assigned heading 047° or 070°. Maintain 5000 feet. Expect radar vectors to assigned route/fix. Expect clearance to requested altitude ten minutes after departure.
- TAKE-OFF ALL OTHER RUNWAYS:** Climb on runway heading or as assigned. Maintain 5000 feet. Expect radar vectors to assigned route/fix. Expect clearance to requested altitude ten minutes after departure.

EC-2, 22 OCT 2009 to 19 NOV 2009

EC-2, 22 OCT 2009 to 19 NOV 2009