

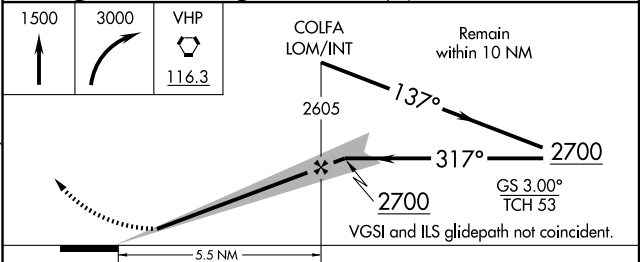
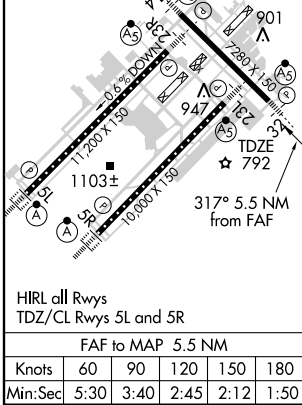
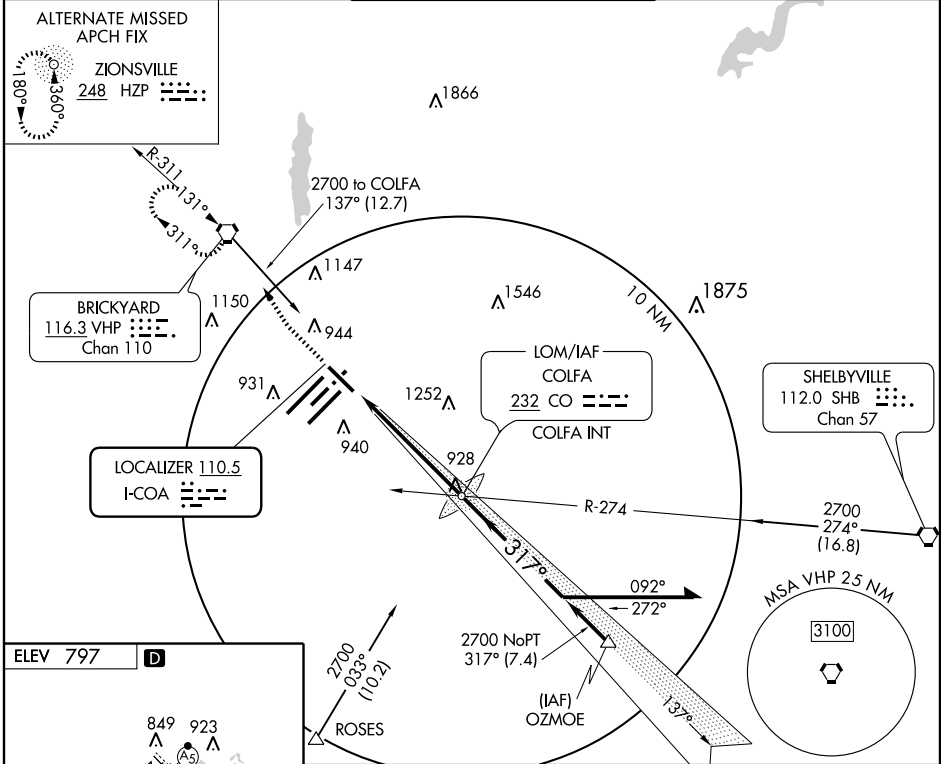
# ILS or LOC RWY 32

INDIANAPOLIS INTL (IND)

LOC I-COA <b>110.5</b>	APP CRS <b>317°</b>	Rwy Idg <b>7280</b> TDZE <b>792</b> Apt Elev <b>797</b>
---------------------------	------------------------	---

<p><b>▽</b> * RVR 1800 authorized with the use of FD or AP or HUD to DA.</p> <p><b>▲</b> MALSR</p>	<p>MISSED APPROACH: Climb to 1500 then climbing right turn to 3000 direct VHP VORTAC and hold, continue climb-in-hold to 3000.</p>
--	--

<p>ATIS <b>134.25</b></p>	<p>INDIANAPOLIS APP CON <b>119.3 317.8</b></p>	<p>INDY TOWER (5R/23L, 14/32) <b>120.9 257.8</b> (5L/23R) <b>127.82 257.8</b></p>	<p>GND CON <b>121.9 257.8</b></p>	<p>CLNC DEL <b>128.75 257.8</b></p>
-------------------------------	--	---	---------------------------------------	---



CATEGORY	A	B	C	D
S-ILS 32		* 992/24	200 (200-½)	
S-LOC 32	1240/24	448 (500-½)	1240/40 448 (500-¾)	1240/50 448 (500-1)
CIRCLING	1420-1	623 (700-1)	1420-1¾ 623 (700-1¾)	1420-2 623 (700-2)

EC-2, 22 OCT 2009 to 19 NOV 2009

EC-2, 22 OCT 2009 to 19 NOV 2009