

(DAWNN3.DAWNN) 07298
DAWNN THREE DEPARTURE

SL-203 (FAA)

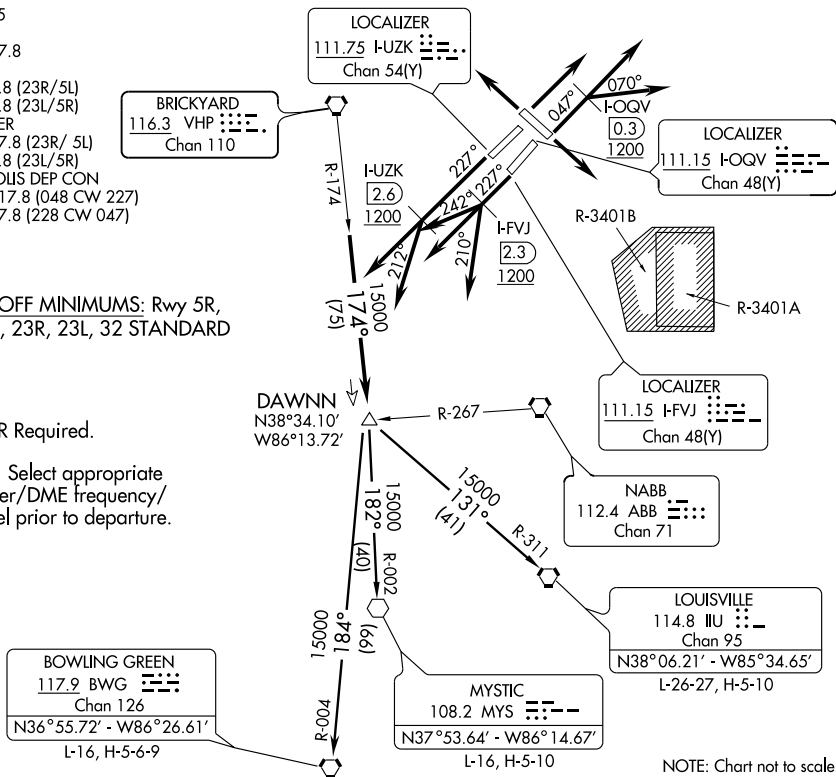
INDIANAPOLIS INTL (IND)
 INDIANAPOLIS, INDIANA

ATIS 134.25
 CLNC DEL
 128.75 257.8
 GND CON
 121.8 257.8 (23R/5L)
 121.9 257.8 (23L/5R)
 INDY TOWER
 127.82 257.8 (23R/ 5L)
 120.9 257.8 (23L/5R)
 INDIANAPOLIS DEP CON
 124.95 317.8 (048 CW 227)
 119.05 317.8 (228 CW 047)

**TAKE-OFF MINIMUMS: Rwy 5R,
 5L, 14, 23R, 23L, 32 STANDARD**

RADAR Required.

**NOTE: Select appropriate
 localizer/DME frequency/
 channel prior to departure.**



NOTE: Chart not to scale.

DEPARTURE ROUTE DESCRIPTION

TAKE-OFF RWY 23R (TURBOJETS ONLY): Climb on runway heading 227° until I-UVK 2.6 DME and 1200 feet or above, then fly assigned heading 227° or 212°. Maintain 5000 feet. Expect radar vectors to join VHP R-174 to DAWNN INT then via transition or assigned route. Expect clearance to requested altitude ten minutes after departure.

TAKE-OFF RWY 23L (TURBOJETS ONLY): Climb on runway heading 227° until I-FVJ 2.3 DME and 1200 feet or above, then fly assigned heading 210°, 227°, or 242°. Maintain 5000 feet. Expect radar vectors to join VHP R-174 to DAWNN INT then via transition or assigned route. Expect clearance to requested altitude ten minutes after departure.

TAKE-OFF RWY 5R (TURBOJETS ONLY): Climb on runway heading 047° until I-OGV 0.3 DME and 1200 feet or above, then fly assigned heading 047° or 070°. Maintain 5000 feet. Expect radar vectors to join VHP R-174 to DAWNN INT then via transition or assigned route. Expect clearance to requested altitude ten minutes after departure.

TAKE-OFF ALL OTHER RUNWAYS (TURBOJETS ONLY): Climb on runway heading or as assigned. Maintain 5000 feet. Expect radar vectors to join VHP R-174 to DAWNN INT then via transition or assigned route. Expect clearance to requested altitude ten minutes after departure.

TAKE-OFF ALL RUNWAYS (PROPELLER ONLY): Climb on runway heading or as assigned. Maintain 3000 feet. Expect radar vectors to join VHP R-174 to DAWNN INT then via transition or assigned route. Expect clearance to requested altitude ten minutes after departure.

BOWLING GREEN TRANSITION (DAWNN3.BWG): Via BWG R-004 to BWG VORTAC.

LOUISVILLE TRANSITION (DAWNN3.IIU): Via IIU R-311 to IIU VORTAC.

MYSTIC TRANSITION (DAWNN3.MYS): Via MYS R-002 to MYS VOR.

DAWNN THREE DEPARTURE
(DAWNN3.DAWNN) 07298

INDIANAPOLIS, INDIANA
 INDIANAPOLIS INTL (IND)

EC-2, 22 OCT 2009 to 19 NOV 2009

EC-2, 22 OCT 2009 to 19 NOV 2009