


VORTAC HON <b>117.6</b> Chan <b>123</b>	APP CRS <b>124°</b>	Rwy Idg TDZE <b>1289</b> Apt Elev <b>1289</b>	<b>7201</b>
---	------------------------	---	-------------

# VOR RWY 12

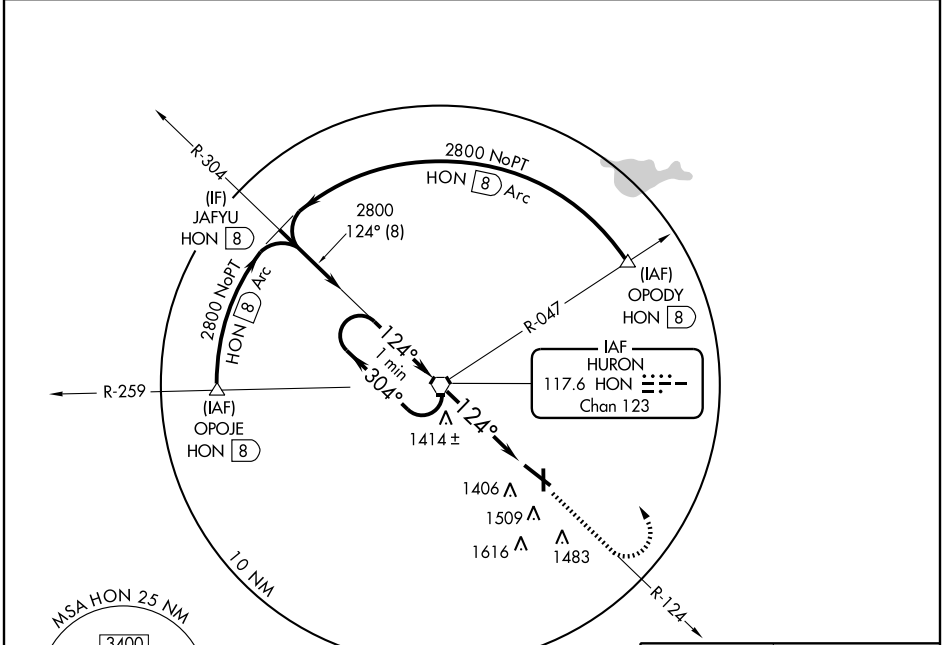
HURON RGNL (HON)

**⚠** When local altimeter setting not received, use Mitchell Muni altimeter setting and increase all MDA 100 feet, increase S-12 Cat C visibility ¼ mile and circling Cats C and D ¼ mile. For inoperative MALS/R increase S-12 Cat D visibility 1¼ mile. VDP NA when using Mitchell Muni altimeter setting.

**MALS R** 

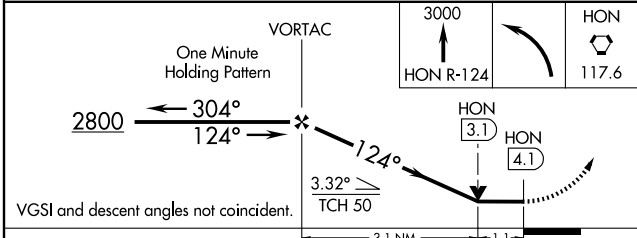
**MISSED APPROACH:** Climb to 3000 via HON VORTAC R-124 then left turn direct HON VORTAC and hold.

ASOS <b>118,125</b>	MINNEAPOLIS CENTER <b>126.25 339.8</b>	HURON RADIO <b>123.6 (CTAF)</b>	UNICOM <b>123.0</b>
------------------------	---	------------------------------------	------------------------



NC-1, 22 OCT 2009 to 19 NOV 2009

NC-1, 22 OCT 2009 to 19 NOV 2009



CATEGORY	A	B	C	D
S-12	1680-½ 391 (400-½)		1680-1 391 (400-1)	
CIRCLING	1820-1	531 (600-1)	1820-1½ 531 (600-1½)	1980-2¼ 691 (700-2¼)

HIRL Rwy 12-30	MIRL Rwy 17-35	REIL Rwys 17, 30 and 35			
FAF to MAP 4.1 NM					
Knots	60	90	120	150	180
Min:Sec	4:06	2:44	2:03	1:38	1:22