

RNAV (GPS) RWY 12

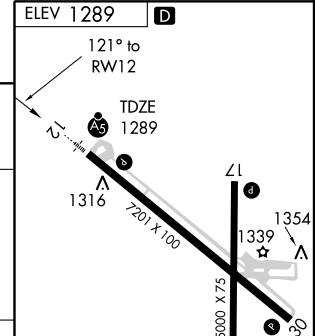
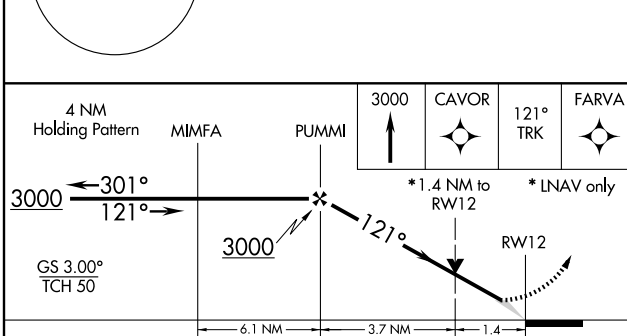
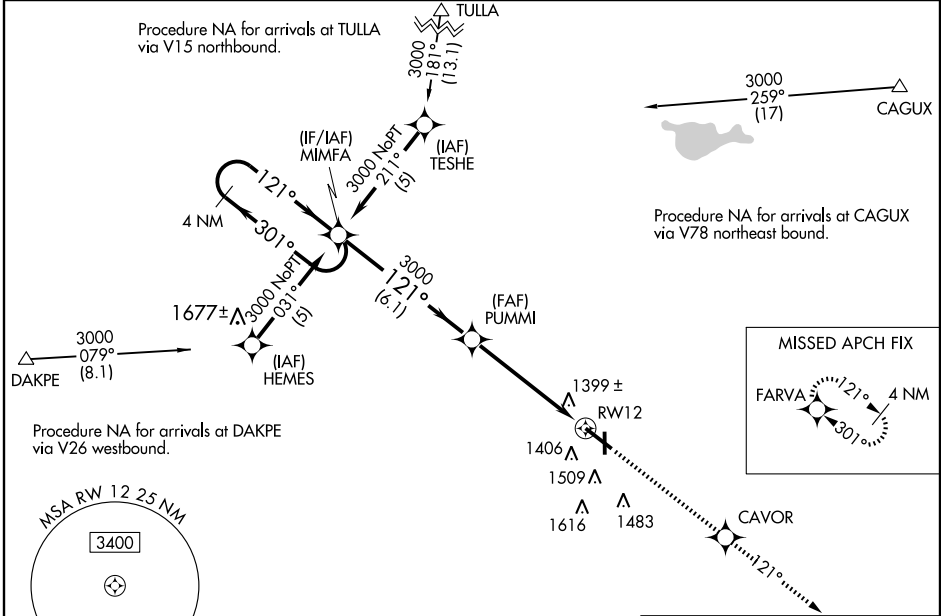
HURON RGNL (HON)

WAAS CH 70314 W12A	APP CRS 121°	Rwy Idg TDZE 1289 Apt Elev 1289	7201
--	------------------------	---	-------------

▼ For uncompensated Baro-VNAV systems, LNAV/VNAV NA below -17°C (2°F) or above 46°C (114°F). DME/DME RNP-0.3 NA. Baro-VNAV and VDP NA when using Mitchell Muni altimeter setting. When local altimeter setting not received, use Mitchell Muni altimeter setting and increase all DA 89 feet and all MDA 100 feet. Increase LNAV/VNAV all Cats, LNAV and Circling Cat C/D visibility ¼ mile. For inoperative MALSR when using Mitchell Muni altimeter setting increase LPV all Cats visibility to 1 mile.

MALSR
MISSED APPROACH:
Climb to 3000 direct
CAVOR and via 121°
track to FARVA and hold.

ASOS 118.125	MINNEAPOLIS CENTER 126.25 339.8	HURON RADIO 123.6 (CTAF)	UNICOM 123.0
------------------------	---	------------------------------------	------------------------



CATEGORY	A	B	C	D
LPV DA	1489-½ 200 (200-½)			
LNAV/VNAV DA	1699-1	410 (500-1)	1699-1½ 410 (500-1½)	
LNAV MDA	1780-½ 491 (500-½)	1780-¾ 491 (500-¾)	1780-1 491 (500-1)	1780-1 491 (500-1)
CIRCLING	1820-1 531 (600-1)	1820-1½ 531 (600-1½)	1980-2¼ 691 (700-2¼)	

HIRL Rwy 12-30

MIRL Rwy 17-35

REIL Rws 17, 30 and 35

NC-1, 22 OCT 2009 to 19 NOV 2009

NC-1, 22 OCT 2009 to 19 NOV 2009