

RNAV (GPS) RWY 13

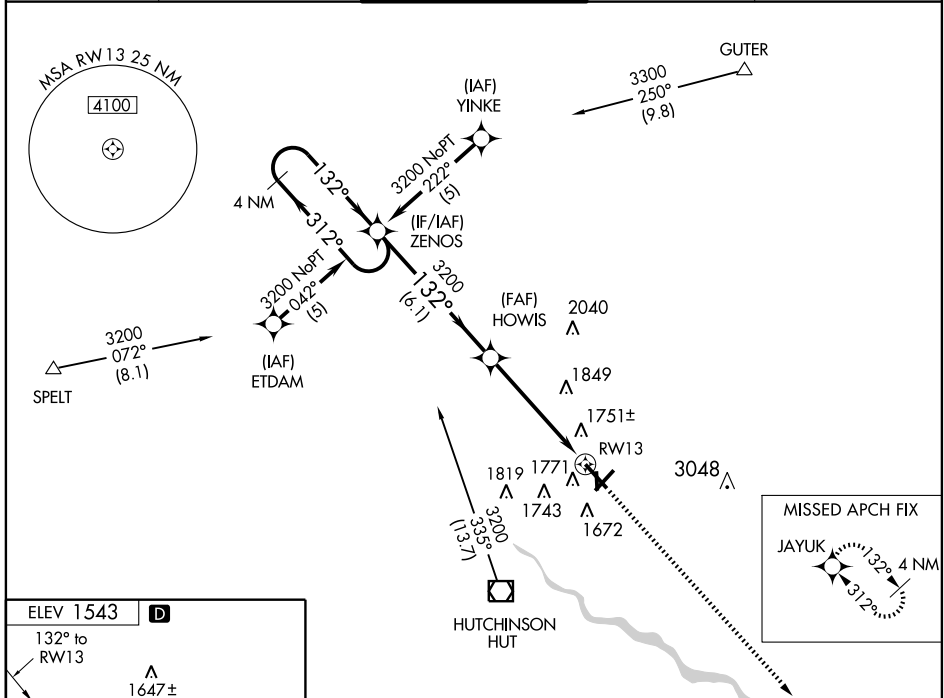
HUTCHINSON MUNI (HUT)

WAAS CH 50210 W13A	APP CRS 132°	Rwy Idg TDZE Apt Elev	7004 1525 1543
--	------------------------	-----------------------------	---

▽ DME/DME RNP-0.3 NA. For uncompensated Baro-VNAV systems, LNAV/VNAV NA below -18°C (0°F) or above 54°C (130°F). When local altimeter setting not received, use Newton altimeter setting and increase all DA 66 feet, and all MDA 80 feet, LPV visibility all Cats ¼ mile, LNAV/VNAV visibility all cats ¾ mile, and circling visibility Cat C ¼ mile. For inoperative MALSR increase LPV visibility to 1¼ mile all Cats; when using Newton altimeter setting, increase LPV visibility to 1½ mile all Cats, inoperative table does not apply to LNAV/VNAV.

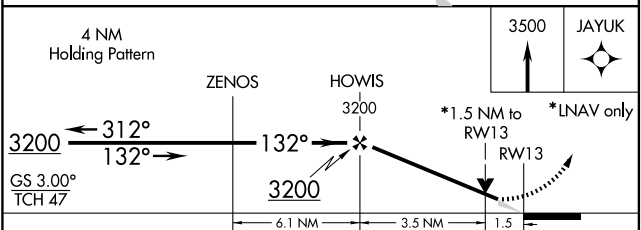
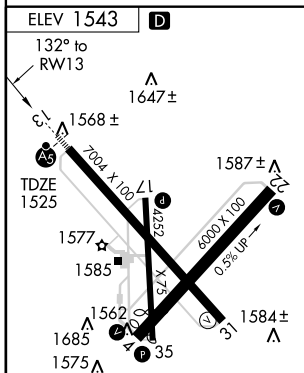
MALSR
 MISSED APPROACH: Climb to 3500 direct JAYUK and hold.

ATIS 124.25	WICHITA APP CON 125.5 306.2	HUTCHINSON TOWER* 118.5 (CTAF) 363.0	GND CON 121.9	UNICOM 122.95
-----------------------	---------------------------------------	--	-------------------------	-------------------------



NC-2, 22 OCT 2009 to 19 NOV 2009

NC-2, 22 OCT 2009 to 19 NOV 2009



	A	B	C	D
LPV DA	1856/40		331 (400-¾)	NA
LNAV/VNAV DA	2077-1½		552 (600-1½)	NA
LNAV MDA	2040/24	515 (600-½)		2040/50 515 (600-1)
CIRCLING	2080-1		537 (600-1)	2080-1½ 537 (600-1½)

REIL Rwy 4, 22 and 31
HIRL Rwy 13-31 **Ⓛ**
MIRL Rwy 4-22 and 17-35 **Ⓛ**