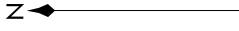
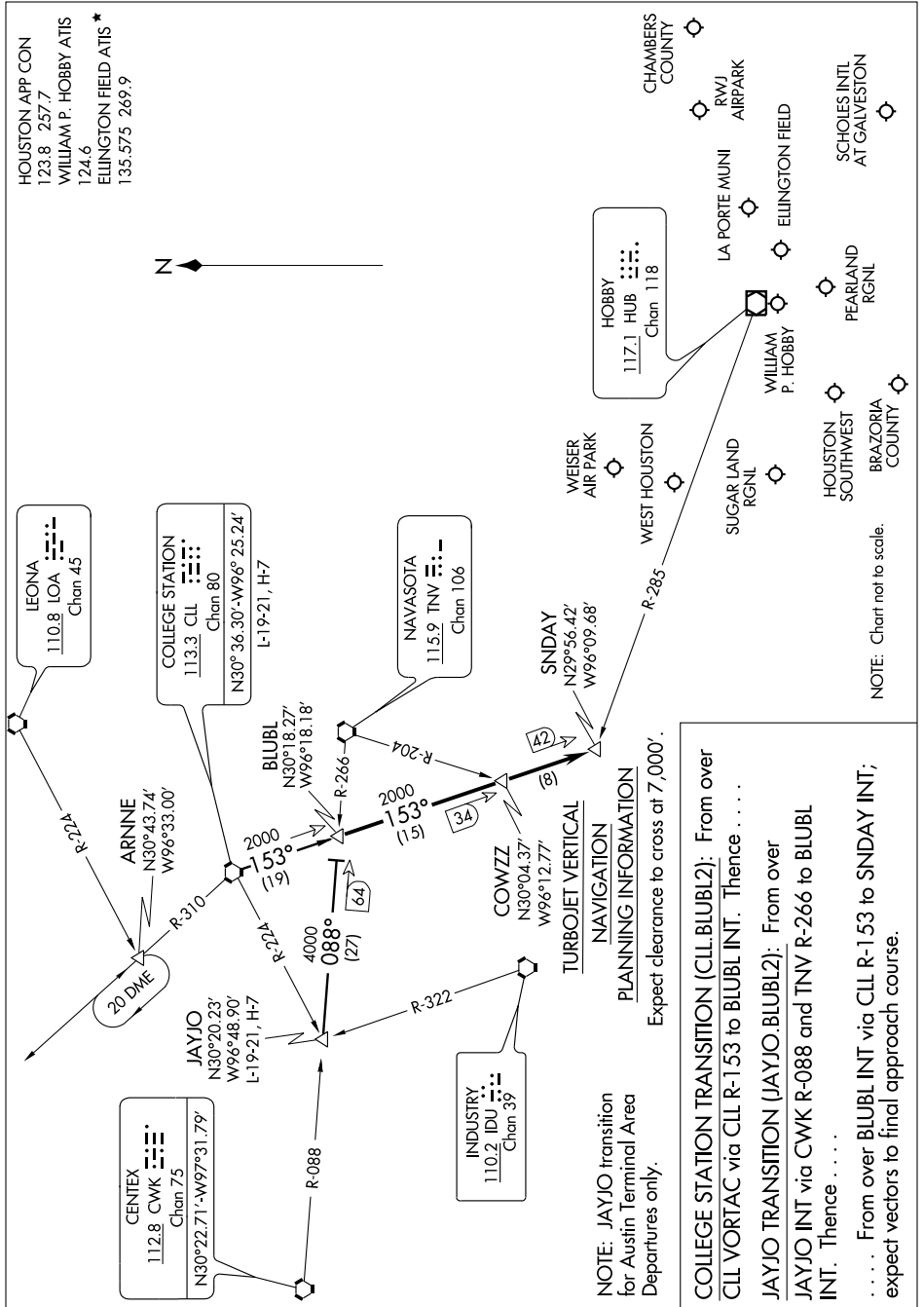


# BLUBELL TWO ARRIVAL (BLUBL.BLUBL2)

HOUSTON, TEXAS

SC-5, 22 OCT 2009 to 19 NOV 2009



HOUSTON APP CON  
123.8 257.7  
WILLIAM P. HOBBY ATIS  
124.6  
ELLINGTON FIELD ATIS \*  
135.575 269.9

CHAMBERS COUNTY  
RWJ AIRPARK  
SCHOLTES INTL AT GALVESTON  
LA PORTE MUNI  
ELLINGTON FIELD  
HOBBY HUB  
Chen 118  
WILLIAM P. HOBBY  
PEARLAND RGNL  
HOUSTON SOUTHWEST  
BRAZORIA COUNTY

LEONA  
110.8 LOA  
Chan 45

COLLEGE STATION  
113.3 CLL  
Chan 80  
N30° 36.30'-W96° 25.24'  
L-19-21, H-7

NAVASOTA  
115.9 TNV  
Chan 106

CENTEX  
112.8 CWK  
Chan 75  
N30°22.71'-W97°31.79'

INDUSTRY  
110.2 IDU  
Chan 39

NOTE: JAYJO transition for Austin Terminal Area Departures only.

Expect clearance to cross at 7,000'.

**NAVIGATION**  
**TURBOJET VERTICAL**  
**PLANNING INFORMATION**

From over COLLEGE STATION TRANSITION (CLL.BLUBL2): From over CLL VORTAC via CLL R-153 to BLUBL INT. Thence . . . .  
From over JAYJO TRANSITION (JAYJO.BLUBL2): From over JAYJO INT via CWK R-088 and TNV R-266 to BLUBL INT. Thence . . . .  
From over BLUBL INT via CLL R-153 to SNDAY INT; . . . . expect vectors to final approach course.

NOTE: Chart not to scale.

# BLUBELL TWO ARRIVAL (BLUBL.BLUBL2)

HOUSTON, TEXAS

SC-5, 22 OCT 2009 to 19 NOV 2009