

HOULTON, MAINE

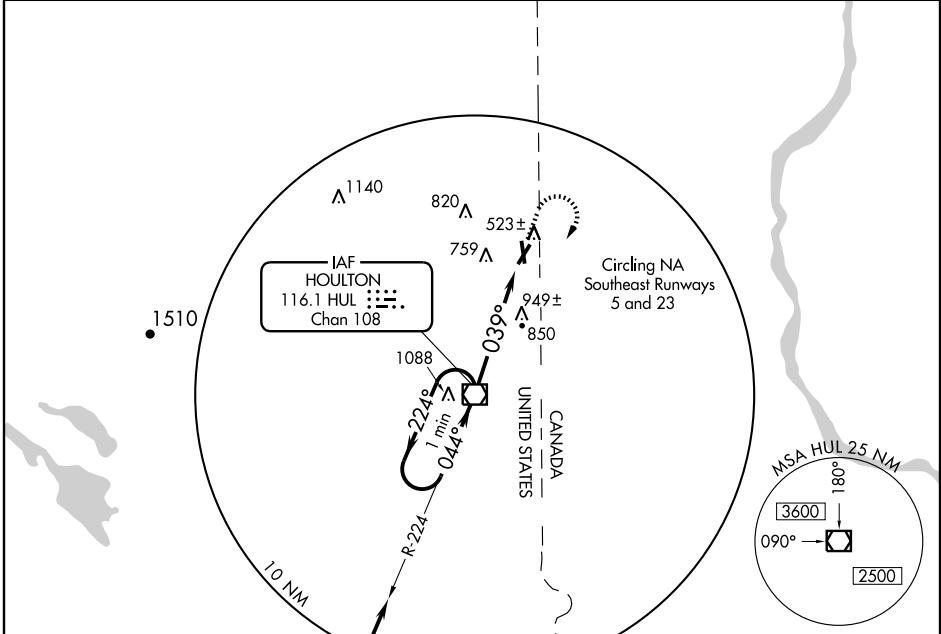
AL-196 (FAA)

VOR RWY 5 HOULTON INTL (HUL)

VOR/DME HUL 116.1 Chan 108	APP CRS 039°	Rwy Idg TDZE Apt Elev	5001 493 493
--	------------------------	-----------------------------	---

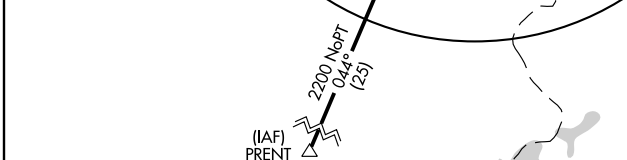
MISSED APPROACH: Climb to 1800, then climbing right turn to 2200 direct HUL VOR/DME and hold.

ASOS 132.025	BOSTON CENTER 120.25 346.4	UNICOM 122.8 (CTAF) 0
------------------------	--------------------------------------	---------------------------------



NE-1, 22 OCT 2009 to 19 NOV 2009

NE-1, 22 OCT 2009 to 19 NOV 2009



ELEV 493 MIRL Rwy 5-23
REIL Rws 5 and 23

Knots	60	90	120	150	180
Min:Sec	4:54	3:16	2:27	1:58	1:38

One Minute Holding Pattern	VOR/DME	1800	2200	HUL 116.1
2200 ← 224°	2200 → 044°			HUL 4.9
				039°
				4.9 NM

CATEGORY	A	B	C	D
S-5	1200-1 707 (800-1)		1200-2 707 (800-2)	NA
CIRCLING	1200-1 707 (800-1)		1200-2 707 (800-2)	NA

HOULTON, MAINE
Amdt 10A 09295

46°07'N - 67°48'W

HOULTON INTL (HUL) VOR RWY 5