

GPS RWY 5

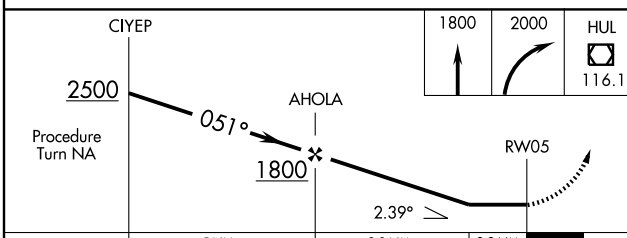
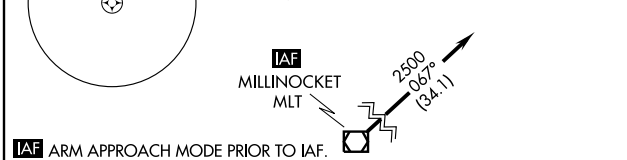
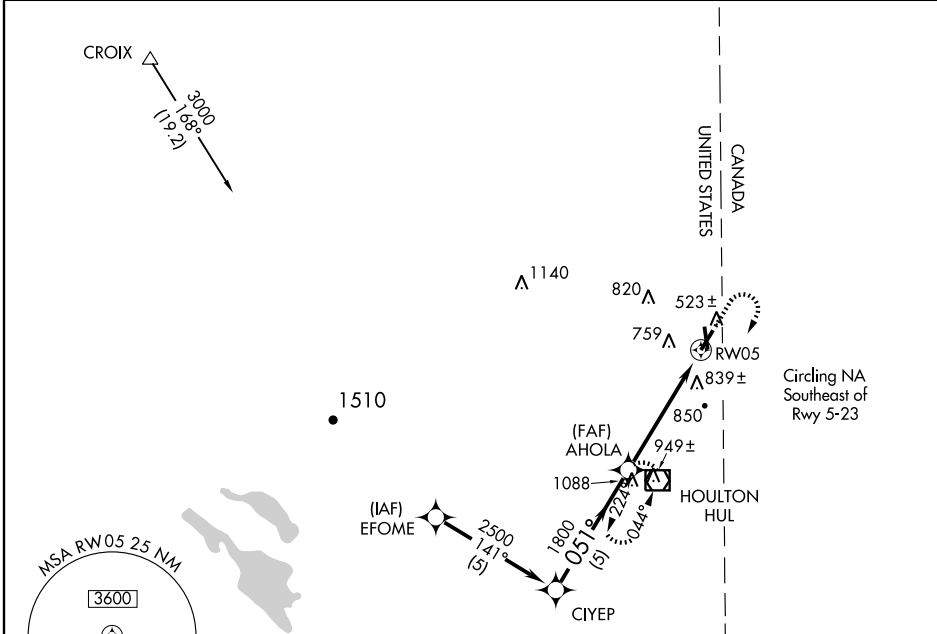
HOULTON INTL (HUL)

APP CRS	Rwy Idg	5001
051°	TDZE	493
	Apt Elev	493

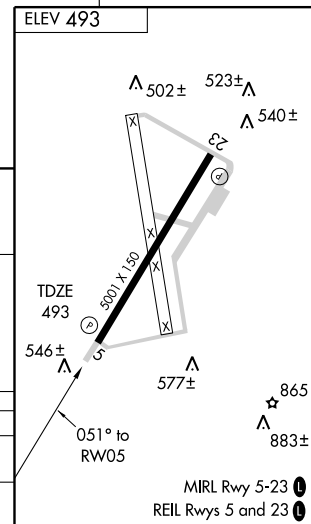
▼
▲ NA

MISSED APPROACH: Climb to 1800, then climbing right turn to 2000 direct HUL VOR/DME and hold.

ASOS 132.025	BOSTON CENTER 120.25 346.4	UNICOM 122.8 (CTAF) 0
------------------------	--------------------------------------	---------------------------------



CATEGORY	A	B	C	D
S-5	1100-1 607 (700-1)		1100-1¾ 607 (700-1¾)	NA
CIRCLING	1100-1 607 (700-1)		1100-1¾ 607 (700-1¾)	NA



NE-1, 22 OCT 2009 to 19 NOV 2009

NE-1, 22 OCT 2009 to 19 NOV 2009