

HONDO, TEXAS

AL-195 (FAA)

# NDB or GPS RWY 35R

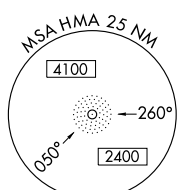
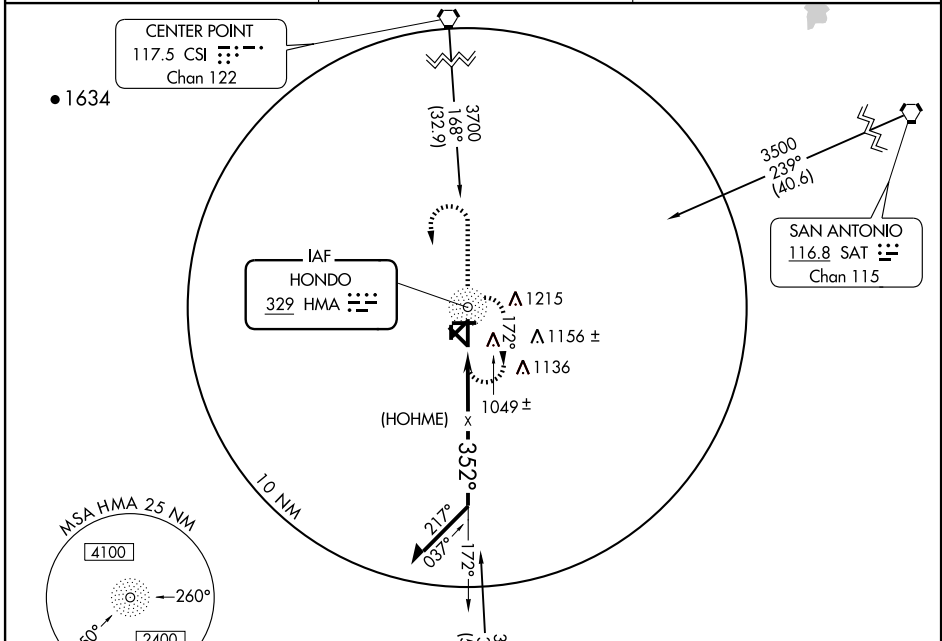
HONDO MUNI (HDO)

NDB HMA <b>329</b>	APP CRS <b>352°</b>	Rwy ldg TDZE Apt Elev	<b>5624</b> <b>912</b> <b>930</b>
-----------------------	------------------------	-----------------------------	---

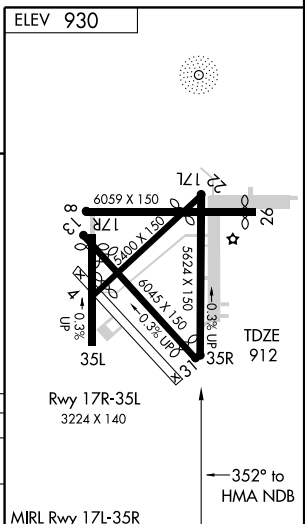
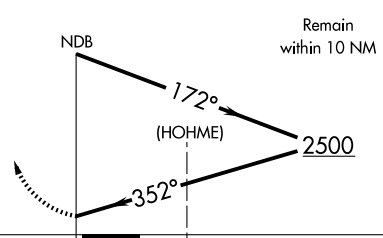
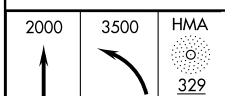
**▲ NA**

MISSED APPROACH: Climb to 2000 then climbing left turn to 3500 direct to HMA NDB and hold.

ASOS <b>119.675</b>	HOUSTON CENTER <b>134.95 269.4</b>	UNICOM <b>122.725 (CTAF)</b>
------------------------	---------------------------------------	---------------------------------



COTULLA  
115.8 COT  
Chan 105



CATEGORY	A	B	C	D
S-35R	1460-1	548 (600-1)	1460-1½ 548 (600-1½)	1460-1¾ 548 (600-1¾)
CIRCLING	1460-1	530 (600-1)	1580-1¾ 650 (700-1¾)	1580-2 650 (700-2)

HONDO, TEXAS  
Amdt 4 09071

29° 22' N- 99° 11' W

# HONDO MUNI (HDO)

## NDB or GPS RWY 35R

SC-3, 22 OCT 2009 to 19 NOV 2009

SC-3, 22 OCT 2009 to 19 NOV 2009