

HELENA, MONTANA

# COPTER VOR 251°

VORTAC HLN <b>117.7</b> Chan <b>124</b>	APCH CRS <b>251°</b>	Rwy Idg TDZE Arpt Elev <b>N/A</b> <b>3848</b> <b>3874</b>
---	-------------------------	--

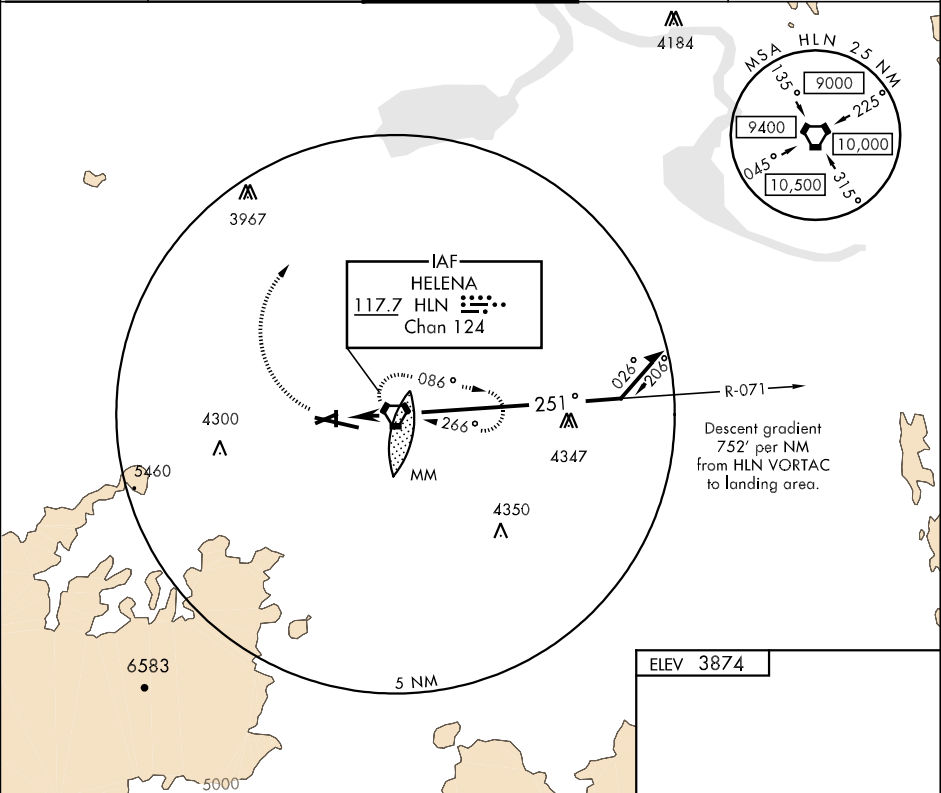
AL-192 [USA]

HELENA REGIONAL (KHLN)

**NA** when tower clsd.

MISSED APPROACH: Climbing right turn to 8000 direct HLN VORTAC and hold.

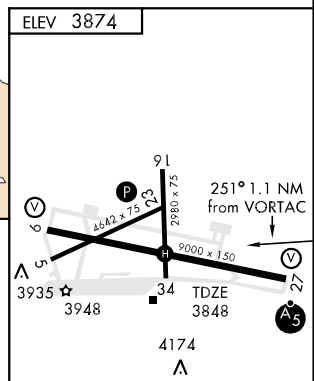
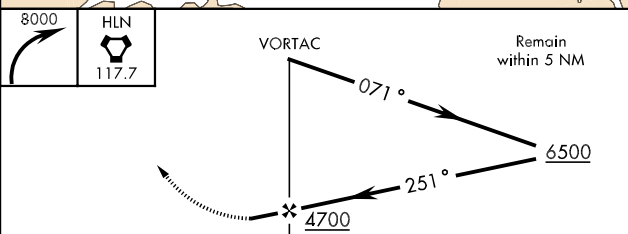
ATIS ★ <b>120.4</b>	HELENA APP CON <b>119.5 229.4</b>	HELENA TOWER ★ <b>118.3 (CTAF) 257.8</b>	GND CON <b>121.9</b>	UNICOM <b>122.95</b>
------------------------	--------------------------------------	---	-------------------------	-------------------------



NW-1, 22 OCT 2009 to 19 NOV 2009

NW-1, 22 OCT 2009 to 19 NOV 2009

**COPTER ONLY** Final approach from holding pattern at HLN VORTAC not authorized. Procedure turn required.



REIL Rwy 9  
MIRL Rwy 5-23 and 16-34  
HIRL Rwy 9-27

CATEGORY	COPTER					FAF to MAP 1.1 NM					
H-251°	4260-½	412	(400-½)			Knots	45	60	75	90	105
						Min:Sec	1:28	1:06	0:53	0:44	0:37

HELENA, MONTANA  
Amdt 1 06159

46°36'N-111°59'W

HELENA REGIONAL (KHLN)

# COPTER VOR 251°