

Orig 09127

# RIVER VISUAL RWY 2

HARTFORD-BRAINARD (HF'D)  
HARTFORD, CONNECTICUT

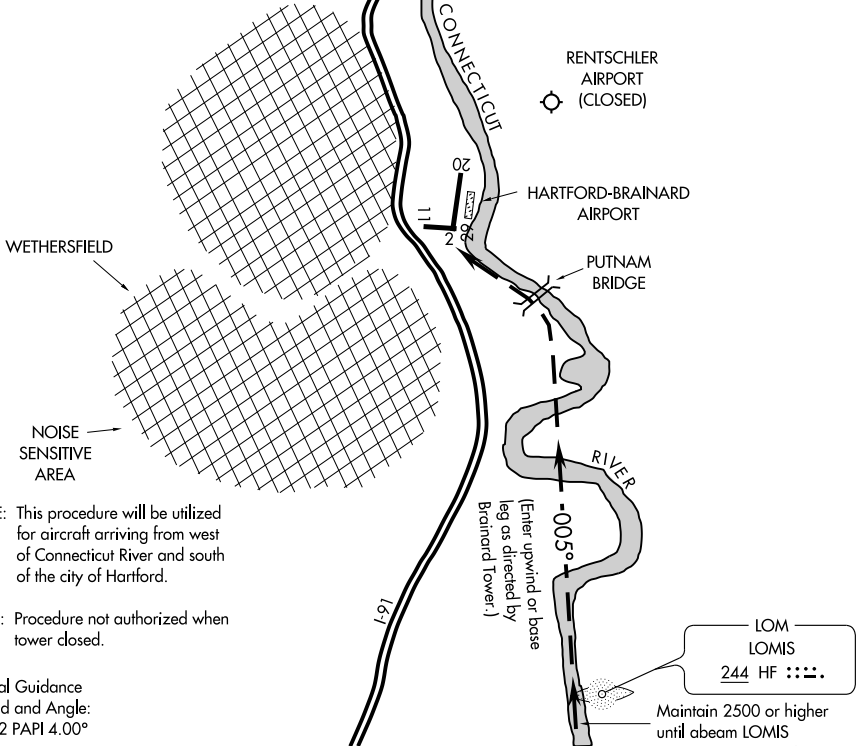
AL-189 (FAA)

ATIS 126.45  
BRADLEY APP CON  
127.8 269.325  
BRAINARD TOWER ★  
119.6 (CTAF) 248.2  
CLNC DEL 121.6

## RADAR REQUIRED

Weather minimums:  
3000 foot ceiling  
and 5 mile visibility

CAUTION: Rentschler  
Field 1.5 NM NE  
of Hartford-Brainard



WETHERSFIELD

NOISE SENSITIVE AREA

NOTE: This procedure will be utilized for aircraft arriving from west of Connecticut River and south of the city of Hartford.

NOTE: Procedure not authorized when tower closed.

Vertical Guidance  
Navaid and Angle:  
RWY 2 PAPI 4.00°

NE-1, 22 OCT 2009 to 19 NOV 2009

NE-1, 22 OCT 2009 to 19 NOV 2009

# RIVER VISUAL RWY 2

41°44'N - 72°39'W

HARTFORD, CONNECTICUT  
HARTFORD-BRAINARD (HF'D)

Orig 09127