

# RNAV (GPS) RWY 13

HARRISBURG INTL (MDT)

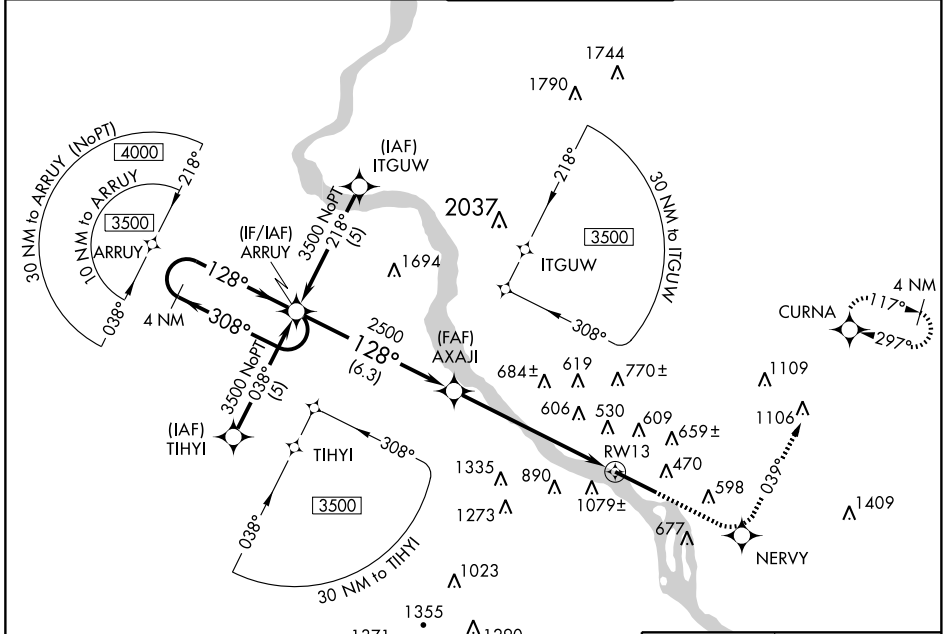
WAAS CH <b>86313</b> <b>W13A</b>	APP CRS <b>128°</b>	Rwy Idg <b>8070</b> TDZE <b>308</b> Apt Elev <b>310</b>
--	------------------------	--

**⚠** Circling NA south of Rwy 13-31. For uncompensated Baro-VNAV systems, LNAV/VNAV NA below -15°C (5F) or above 48°C (118°F). DME/DME RNP-0.3 NA. Inoperative table does not apply to LNAV/VNAV all Cats.



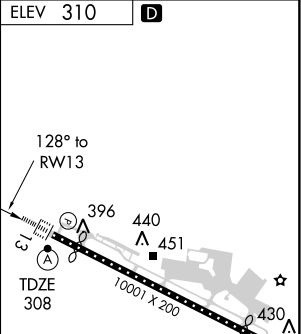
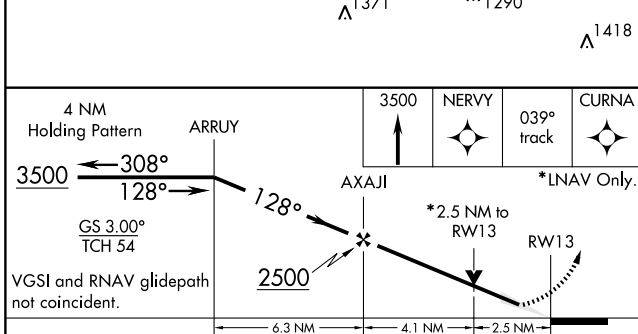
**MISSED APPROACH:** Climb to 3500 direct NERVY and via track 039° to CURNA and hold, continue climb-in-hold to 3500.

ATIS <b>118.8</b>	HARRISBURG APP CON <b>124.1 273.525</b>	HARRISBURG INTL TOWER <b>124.8 269.35</b>	GND CON <b>121.7 348.6</b>
----------------------	--	--	-------------------------------



NE-4, 22 OCT 2009 to 19 NOV 2009

NE-4, 22 OCT 2009 to 19 NOV 2009



CATEGORY	A	B	C	D
LPV DA		558/24	250 (300-1/2)	
LNAV/VNAV DA		1572-5	1264 (1300-5)	
LNAV MDA	1180/24 872 (900-1/2)	1180/40 872 (900-3/4)	1180-2 872 (900-2)	1180-2 1/4 872 (900-2 1/4)
CIRCLING	1180-1 870 (900-1)	1180-1 1/4 870 (900-1 1/4)	1180-2 1/2 870 (900-2 1/2)	1180-2 3/4 870 (900-2 3/4)

TDZ/CL Rwy 13	308
REIL Rwy 31	
HIRL Rwy 13-31	