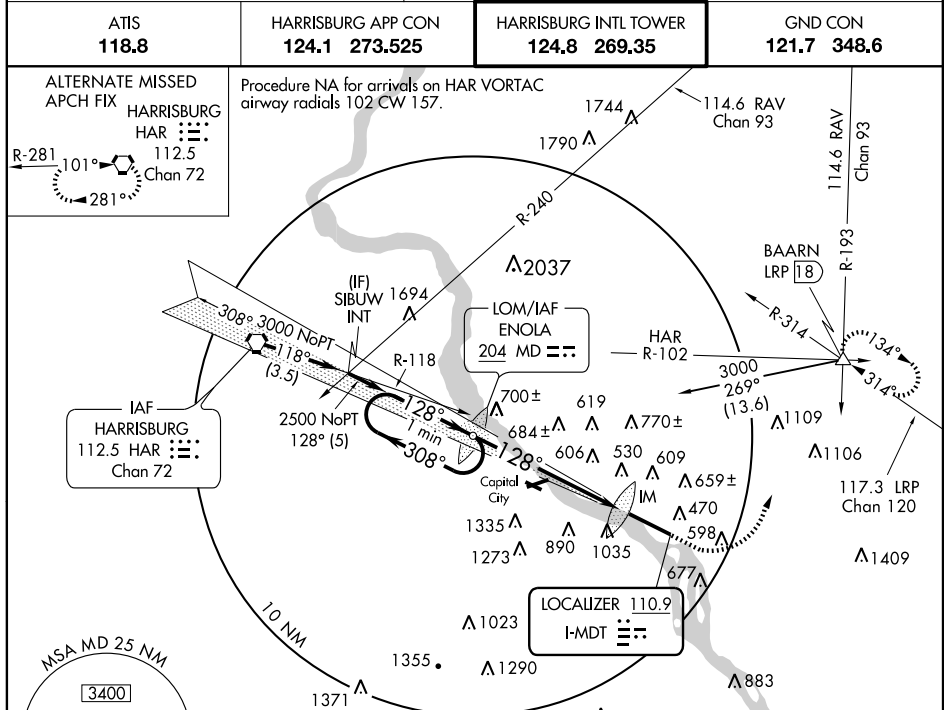


# ILS or LOC RWY 13

HARRISBURG INTL (MDT)

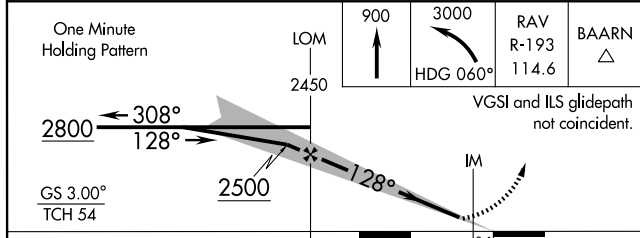
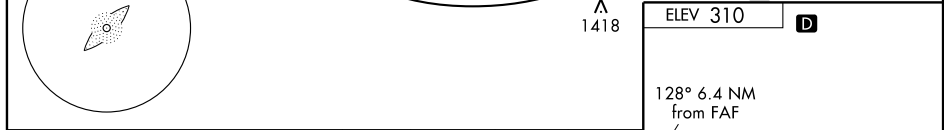
LOC I-MDT <b>110.9</b>	APP CRS <b>128°</b>	Rwy Idg <b>8070</b> TDZE <b>308</b> Apt Elev <b>310</b>
---------------------------	------------------------	---

<p>◄ Circling NA south of Rwy 13-31.</p>	<p>ALS-2</p>	<p>MISSED APPROACH: Climb to 900, then climbing left turn to 3000 via heading 060° and RAV VORTAC R-193 to BAARN Int/LRP 18 DME and hold.</p>	
			<p>ATIS <b>118.8</b></p>



NE-4, 22 OCT 2009 to 19 NOV 2009

NE-4, 22 OCT 2009 to 19 NOV 2009



CATEGORY	A	B	C	D
S-ILS 13		508/18	200 (200-½)	
S-LOC 13	900/24	592 (600-½)	900/50 592 (600-1)	900/60 592 (600-1½)
CIRCLING	900 - 1	590 (600-1)	920 - 1¾ 610 (700-1¾)	980 - 2 670 (700-2)

TDZ/CL Rwy 13					
REIL Rwy 31					
HIRL Rwy 13-31					
FAF to MAP 6.4 NM					
Knots	60	90	120	150	180
Min:Sec	6:24	4:16	3:12	2:34	2:08