

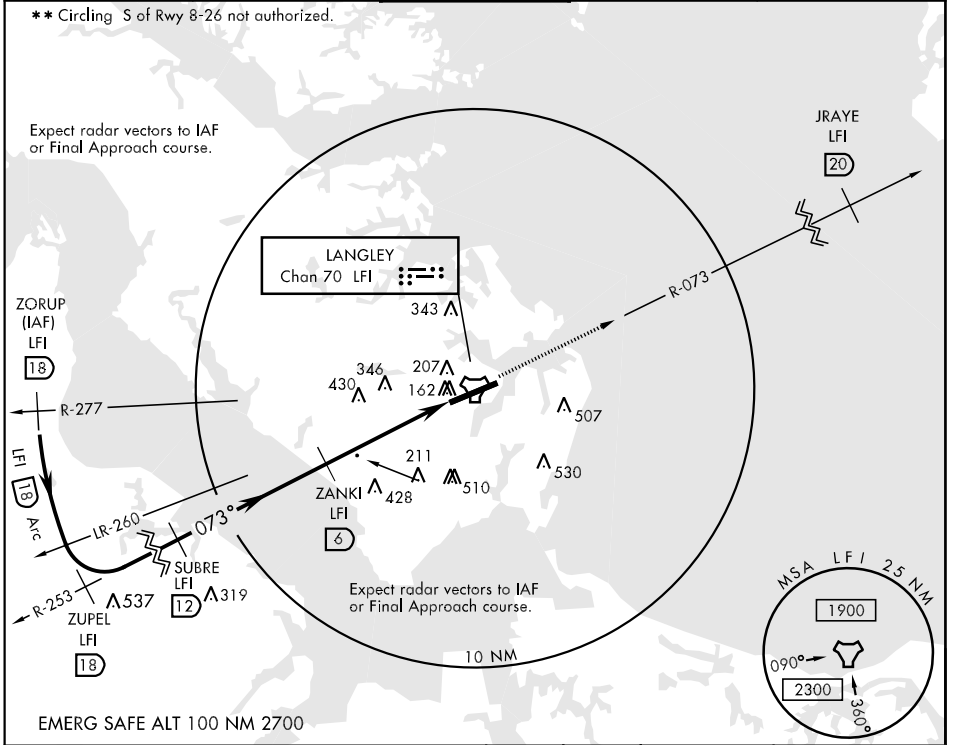
TACAN LFI Chan <b>70</b>	APCH CRS <b>073°</b>	Rwy Idg <b>10,000</b> TDZE <b>9</b> Arpt Elev <b>11</b>	AL-185 [USAF]	LANGLEY AFB (KLFJ)
-----------------------------	-------------------------	---	---------------	--------------------

**V** \*When ALS inop, increase CAT AB RVR to 50 and vis to 1 mile, CAT C RVR to 60 and vis to 1½ miles, CAT D vis to 1½ miles, CAT E vis to 1¾ miles.
 

**ALSF-1**  

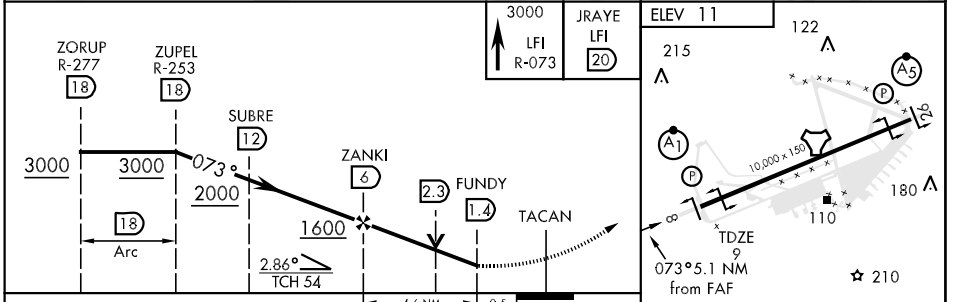
**MISSED APPROACH:** Climb to 3000 via LFI R-073 to 20 DME (JRAYE).

ATIS ★ <b>270.1</b>	NORFOLK APP CON <b>125.7 335.625</b>	LANGLEY TOWER <b>125.0 253.5</b>	GND CON <b>121.7 275.8</b>	CLNC DEL <b>118.85 257.625</b>
------------------------	---	-------------------------------------	-------------------------------	-----------------------------------



NE-3, 22 OCT 2009 to 19 NOV 2009

NE-3, 22 OCT 2009 to 19 NOV 2009



CATEGORY	A	B	C	D	E
TAC 8 *	480/24 471 (500-½)	480/40 471 (500-¾)	480/50 471 (500-1)	480/60 471 (500-1¼)	
CIRCLING **	540-1 529 (600-1)	580-1½ 569 (600-1½)	580-2 569 (600-2)	760-2¾ 749 (800-2¾)	

REIL Rwy 26  
HIRL Rwy 8-26