

HAMPTON, VIRGINIA

TACAN RWY 26

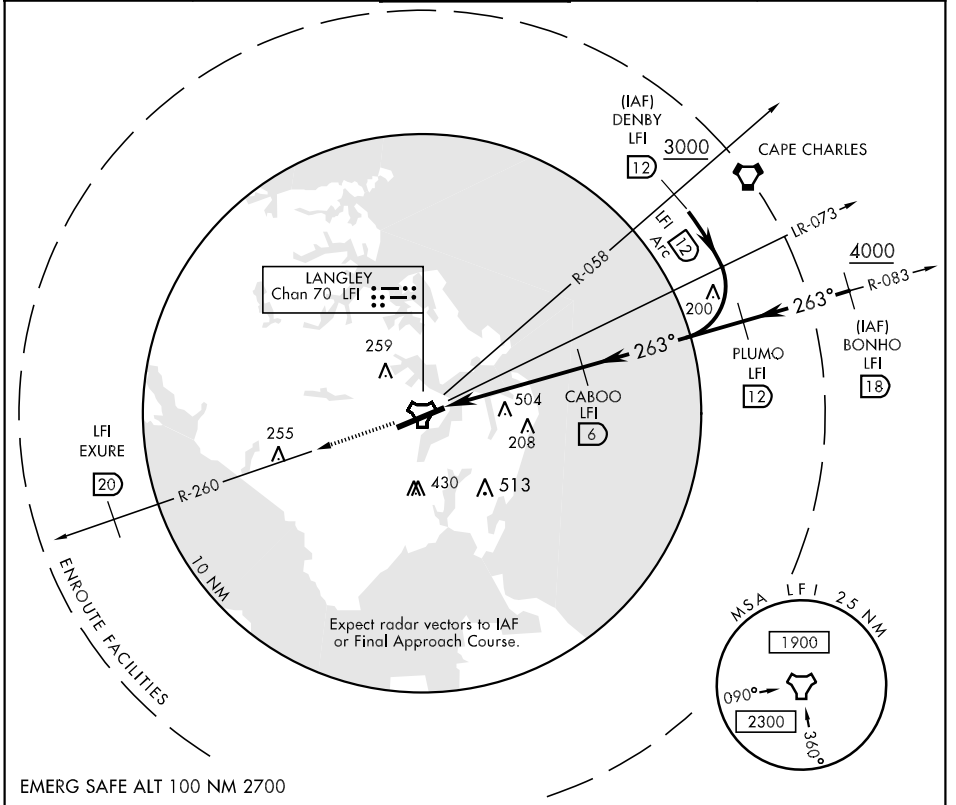
TACAN LFI Chan 70	APCH CRS 263°	Rwy Idg 10,000 TDZE Arpt Elev 11	AL-185 [USAF]	LANGLEY AFB (KLFJ)
-----------------------------	-------------------------	--	---------------	--------------------

▼ *When ALS inop, increase CAT AB RVR to 50 and vis to 1 mile, CAT C RVR to 60 and vis to 1¼ miles, CAT DE vis to 1½ miles.
 **Circling S of Rwy 8-26 not authorized.



MISSED APPROACH: Climb to 3000 via LFI R-260 to 20 DME (EXURE).

ATIS ★ 270.1	NORFOLK APP CON 125.7 335.625	LANGLEY TOWER 125.0 253.5	GND CON 121.7 275.8	CLNC DEL 118.85 257.625
------------------------	---	-------------------------------------	-------------------------------	-----------------------------------



NE-3, 22 OCT 2009 to 19 NOV 2009

NE-3, 22 OCT 2009 to 19 NOV 2009

3000 LFI R-260	EXURE LFI 20	PLUMO R-083 12	ELEV 11
----------------	--------------	----------------	---------

263° 5.3 NM from FAF
 2000
 1600
 2.74° TCH 58
 10,000 x 150
 TDZE 10 15 180
 110

CATEGORY	A	B	C	D	E
S- 26 *	440/40	430	(500-¾)	440/50	430 (500-1)
CIRCLING **	540-1 529 (600-1)	580-1 ½ 569 (600-1½)	580-2 569 (600-2)	760-2 ¾ 749 (800-2¾)	

☆ 210
 REIL Rwy 26
 HIRL Rwy 8-26

HAMPTON, VIRGINIA
Amdt 2 09043

37°05'N-76°21'W

LANGLEY AFB (KLFJ)

TACAN RWY 26