

HAMPTON, VIRGINIA

RNAV (GPS) RWY 26

APCH CRS	Rwy ldg	10,000
258°	TDZE	10
	Arpt Elev	11

AL-185 [USAF]

LANGLEY AFB (KLFJ)

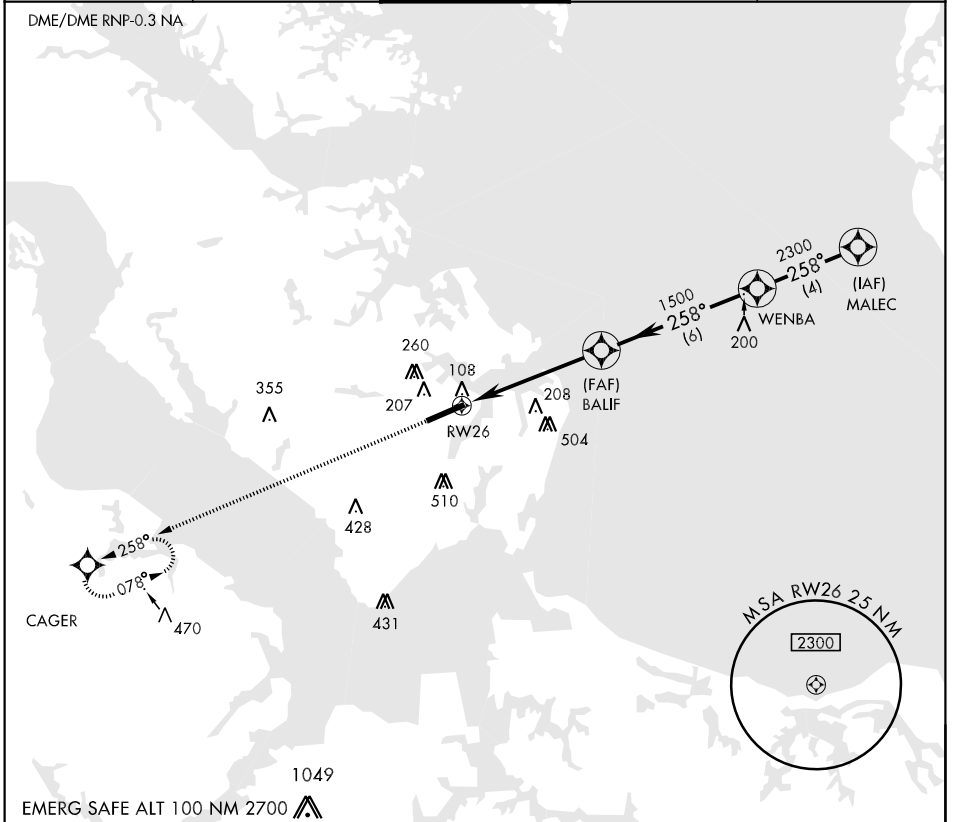
▼ * When ALS inop, increase CAT AB RVR to 50 and vis to 1 mile, CAT CD vis to 1½ miles, CAT E vis to 1¾ miles.

 MALS R

 MISSED APPROACH: Climb to 3000 on course 258° to CAGER WPT and hold.

** Circling S of Rwy 8-26 not authorized for CAT E acft.

ATIS ★ 270.1	NORFOLK APP CON 125.7 335.625	LANGLEY TOWER 125.0 253.5	GND CON 121.7 275.8	CLNC DEL 118.85 257.625
------------------------	---	-------------------------------------	-------------------------------	-----------------------------------



3000 crs 258°	CAGER	MALEC 3000	ELEV 11		
RW26 1.1 NM to RW26 BALIF 1500 WENBA 2300 MALEC 3000					
CATEGORY	A	B	C	D	E
S-26 *	520/40 510 (600-¾)	520/50 510 (600-1)	520/60 510 (600-1¼)		
CIRCLING **	540-1 529 (600-1)	580-1½ 569 (600-1½)	580-2 569 (600-2)	760-2¾ 749 (800-2¾)	

REIL Rwy 26 ★ 210

HIRL Rwy 8-26

HAMPTON, VIRGINIA

37°05'N-76°21'W

LANGLEY AFB (KLFJ)

Amdt 1 09043

RNAV (GPS) RWY 26

NE-3, 22 OCT 2009 to 19 NOV 2009

NE-3, 22 OCT 2009 to 19 NOV 2009