

LOC I-LFI <b>109.9</b>	APCH CRS <b>078°</b>	Rwy Idg TDZE Arpt Elev <b>10,000</b> <b>9</b> <b>11</b>
---------------------------	-------------------------	--

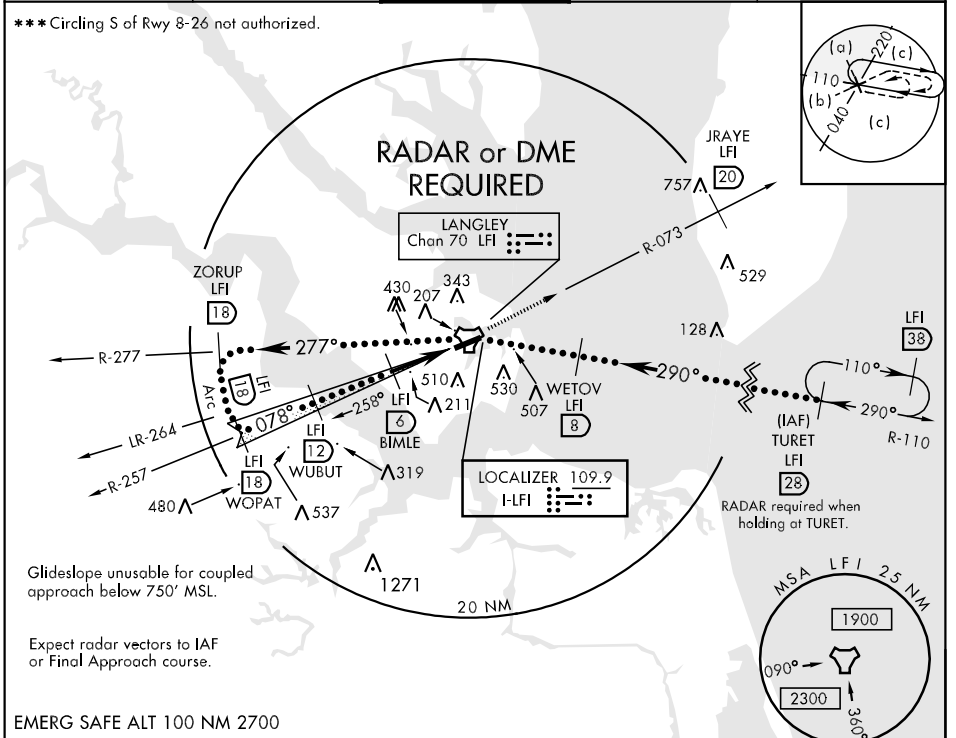
JAL-185 [USAF]

LANGLEY AFB (KLFJ)

<p>▼ * When ALS inop, increase RVR to 40 and vis to ¾ mile. ** When ALS inop, increase CAT C RVR to 60 and vis to 1¼ miles, CAT D vis to 1½ miles, CAT E vis to 1¾ miles.</p>	<p>ALSF-1 A1</p>	<p>MISSED APPROACH: Climb to 3000 via LFI R-073 to 20 DME (JRAYE).</p>
---	----------------------	--

<p>ATIS ★ <b>270.1</b></p>	<p>NORFOLK APP CON <b>125.7 335.625</b></p>	<p>LANGLEY TOWER <b>125.0 253.5</b></p>	<p>GND CON <b>121.7 275.8</b></p>	<p>CLNC DEL <b>118.85 257.625</b></p>
--------------------------------	---	---	---------------------------------------	---

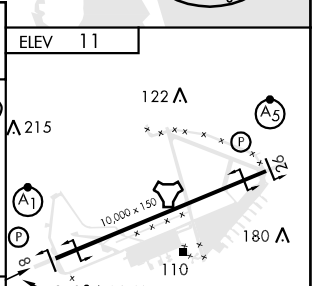
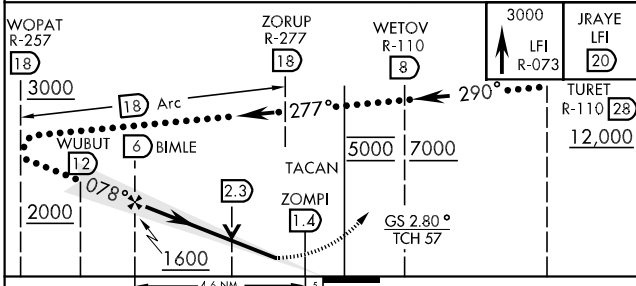
\*\*\* Circling S of Rwy 8-26 not authorized.



Glideslope unusable for coupled approach below 750' MSL.

Expect radar vectors to IAF or Final Approach course.

EMERG SAFE ALT 100 NM 2700



CATEGORY	C	D	E
S-ILS 8 *	209/24	200	(200-½)
S-LOC 8 **	480/40 471 (500-¾)	480/50 471 (500-1)	480/60 471 (500-1¼)
CIRCLING ***	580-1½ 569 (600-1½)	580-2 569 (600-2)	760-2¾ 749 (800-2¾)

ELEV	11
TURET R-110	28
JRAYE LFI R-073	20
WETOV R-110	8
ZORUP R-277	18
WOPAT R-257	18
WUBUT LFI 12	12
BIMBLE LFI 6	6
TACAN	2.3
ZOMPI	1.4
GS 2.80°	TCH 57
REIL Rwy 26	210
HIRL Rwy 8-26	210
FAF to MAP 4.6 NM	
Knots	120 140 160 180 200
Min:Sec	2:18 1:58 1:43 1:32 1:23

NE-3, 22 OCT 2009 to 19 NOV 2009

NE-3, 22 OCT 2009 to 19 NOV 2009