

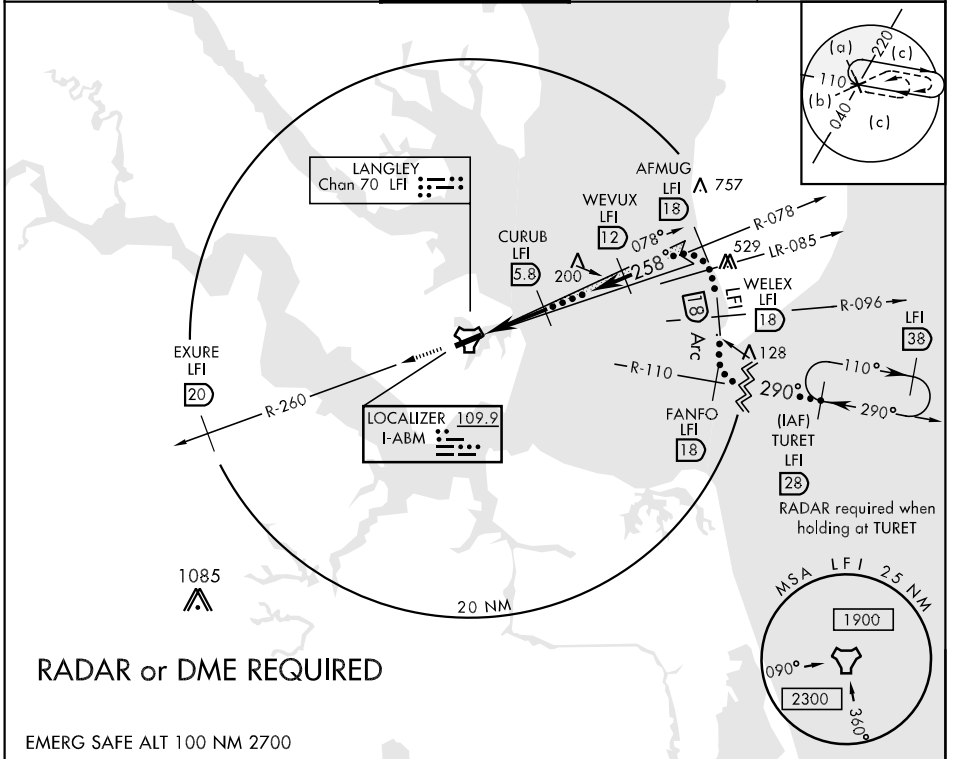
LOC I-ABM 109.9	APCH CRS 258°	Rwy Idg 10,000 TDZE Arpt Elev 11	JAL-185 [USAF]	LANGLEY AFB (KLFJ)
---------------------------	-------------------------	--	----------------	--------------------

* When ALS inop, increase CAT C RVR to 50 and vis to 1 mile, CAT DE RVR to 60 and vis to 1¼ miles.
 ** Circling S of Rwy 8-26 not authorized.

 MALSR #####
A5

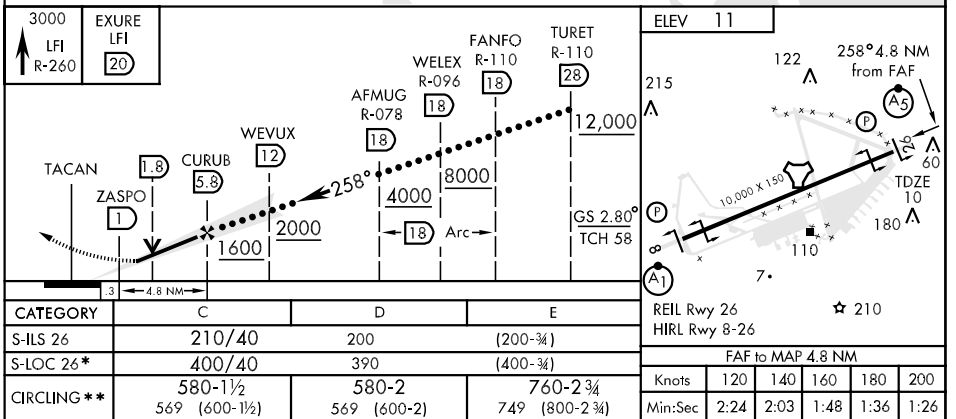
 MISSED APPROACH: Climb to 3000 via LFI R-260 to 20 DME (EXURE).

ATIS ★ 270.1	NORFOLK APP CON 125.7 335.625	LANGLEY TOWER 125.0 253.5	GND CON 121.7 275.8	CLNC DEL 118.85 257.625
------------------------	---	-------------------------------------	-------------------------------	-----------------------------------



RADAR or DME REQUIRED

EMERG SAFE ALT 100 NM 2700



NE-3, 22 OCT 2009 to 19 NOV 2009

NE-3, 22 OCT 2009 to 19 NOV 2009