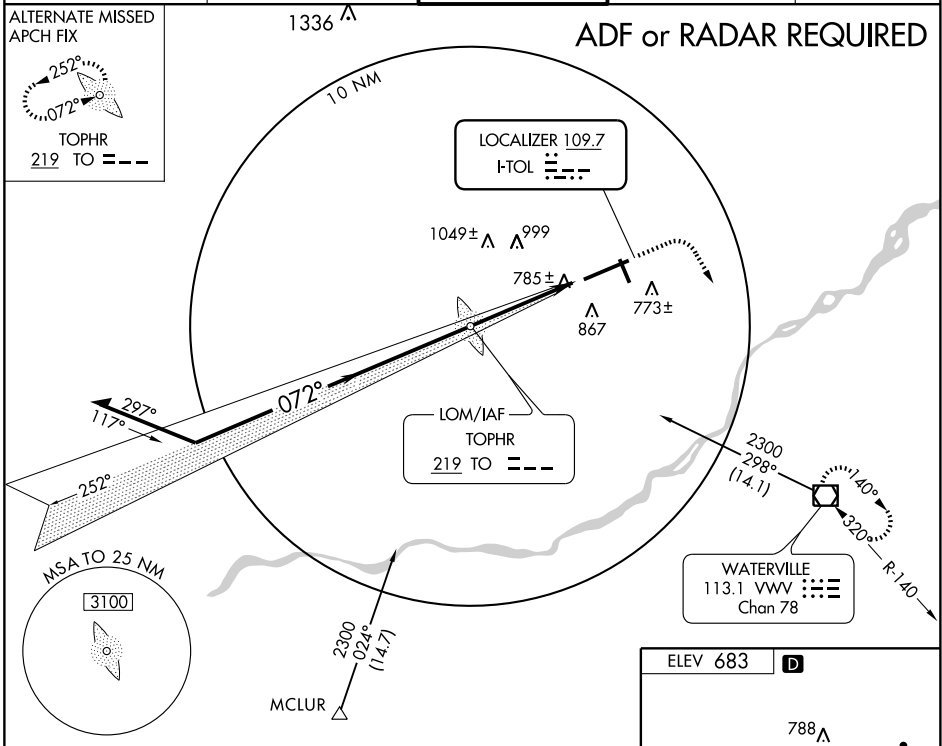


ILS or LOC RWY 7
TOLEDO EXPRESS (TOL)

LOC I-TOL 109.7	APP CRS 072°	Rwy ldg 10599 TDZE 683 Apt Elev 683
---------------------------	------------------------	--

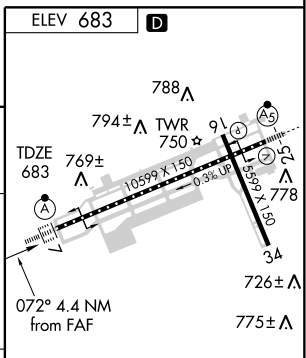
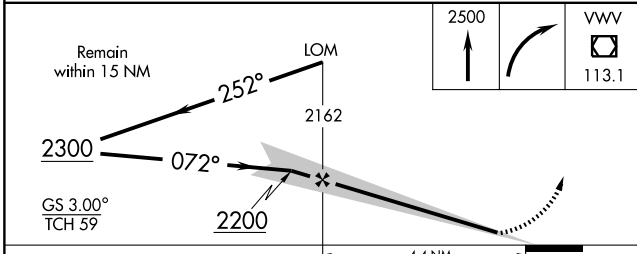
ALSF-2 ASR	For inoperative ALSF, increase S-ILS 7 Cat E visibility to ¾ mile, S-LOC 7 Cat E visibility to 1½ mile.	MISSED APPROACH: Climb to 2500 then right turn direct VVV VOR/DME and hold.

ATIS 118.75 271.3	TOLEDO APP CON 134.35 317.55	TOLEDO TOWER 118.1 285.4	GND CON 121.9 348.6	CLNC DEL 121.75 348.6
-----------------------------	--	------------------------------------	-------------------------------	---------------------------------



EC-2, 22 OCT 2009 to 19 NOV 2009

EC-2, 22 OCT 2009 to 19 NOV 2009



CATEGORY	A	B	C	D	E
S-ILS 7	883/18 200 (200-½)			883/24 200 (200-½)	
S-LOC 7	1080/24 397 (400-½)		1080/40 397 (400-¾)	1080/50 397 (400-1)	
CIRCLING	1180-1 497 (500-1)	1180-1½ 497 (500-1½)	1240-2 557 (600-2)	1400-2½ 717 (800-2½)	

TDZ/CL Rwy 7	883/24
HIRL Rwy 7-25	200 (200-½)
MIRL Rwy 16-34	397 (400-1)
REIL Rwy 16 and 34	397 (400-1)
FAF to MAP 4.4 NM	
Knots	60 90 120 150 180
Min:Sec	4:24 2:56 2:12 1:46 1:28