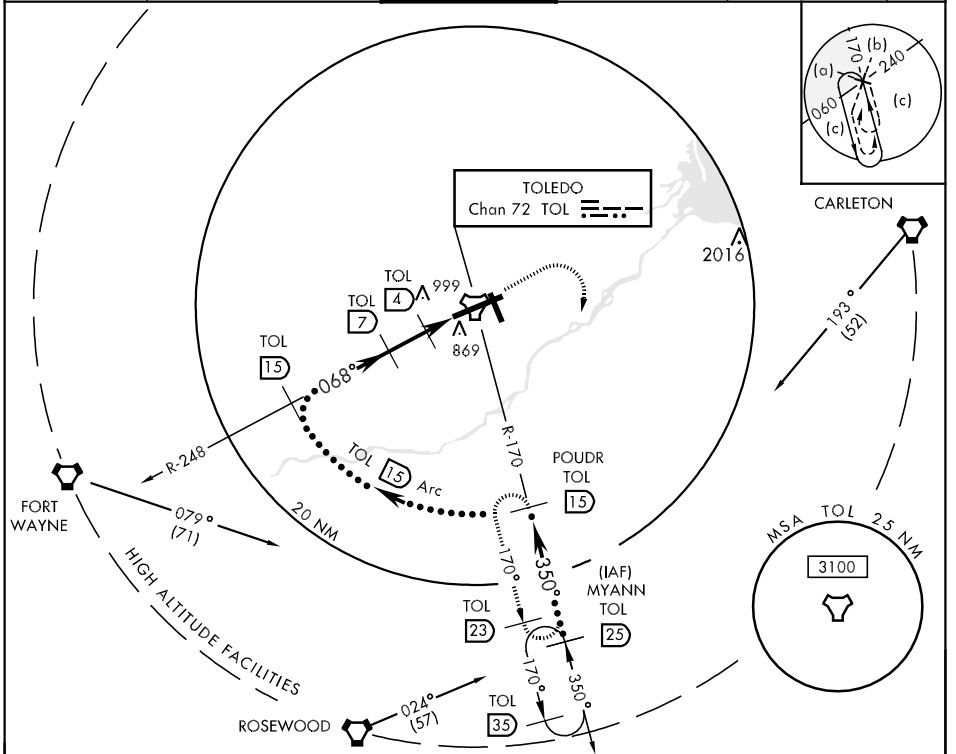


TACAN TOL Chan 72	APCH CRS 068°	Rwy Idg 10,599 TDZE 683 Arpt Elev 683	JAL-184 [USAF]	TOLEDO EXPRESS (KTOL)
----------------------	------------------	---	----------------	-----------------------

MISSED APPROACH: Climb to 3000 then right turn via TOL R-170 to POUDR and hold.

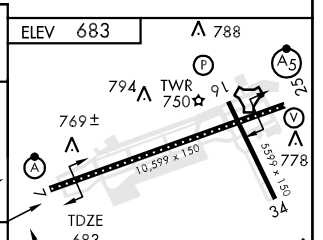
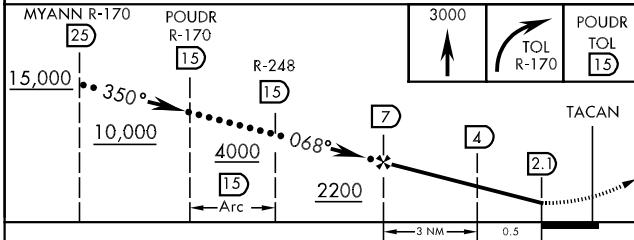
ATIS 118.75 271.3	TOLEDO APP CON 126.1 317.55	TOLEDO TOWER 118.1 285.4	GND CON 121.9 348.6	CLNC DEL 121.75	ASR
----------------------	--------------------------------	-----------------------------	------------------------	--------------------	-----



EC-2, 22 OCT 2009 to 19 NOV 2009

EC-2, 22 OCT 2009 to 19 NOV 2009

EMERG SAFE ALT 100 NM 4000



CATEGORY	C	D	E
S-7	1060/24 377 (400-1/2)	1060/50 377	(400-1)
CIRCLING	1180-1 1/2 496 (500-1 1/2)	1240-2 556 (600-2)	1360-2 1/2 676 (700-2 1/2)
S-ASR 7	1080/24 397 (400-1/2)	1080/50 397	(400-1)

HIRL Rwy 7-25
 MIRL Rwy 16-34
 REIL Rws 16 and 34
 TDZL/CL Rwy 7