

TOLEDO, OHIO

# HI-ILS or LOC RWY 25

LOCALIZER I-BQE <b>108.7</b>	APCH CRS <b>252°</b>	Rwy Idg <b>10,599</b> TDZE <b>678</b> Arpt Elev <b>683</b>
---------------------------------	-------------------------	--

JAL-184 [USAF]

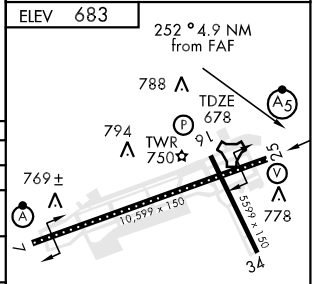
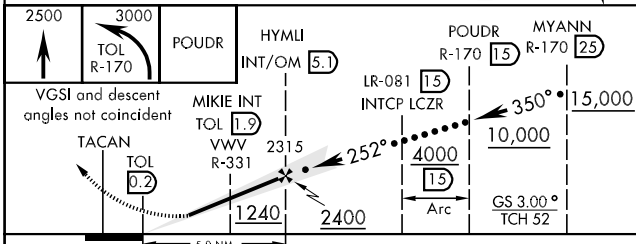
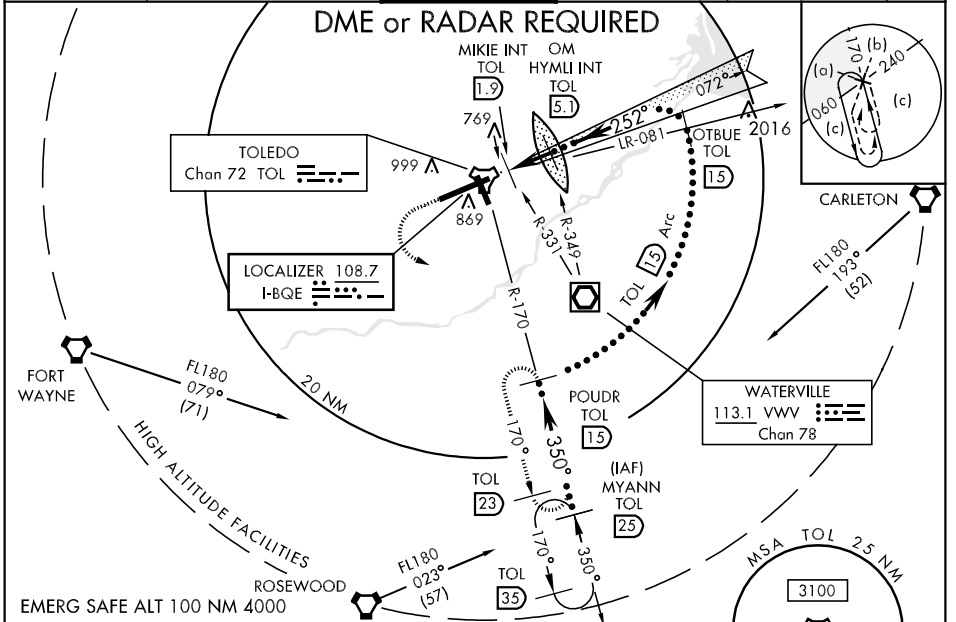
TOLEDO EXPRESS (KTOL)

\* When ALS inop increase CAT E vis to 3/4 mile.  
 \*\* When ALS inop increase CAT E vis to 1 1/4 mile.



MISSED APPROACH: Climb to 2500 then climbing left turn to 3000 via TOL R-170 to POUDR (TOL R-170/15 DME) and hold.

ATIS <b>118.75 271.3</b>	TOLEDO APP CON <b>126.1 317.55</b>	TOLEDO TOWER <b>118.1 285.4</b>	GND CON <b>121.9 348.6</b>	CLNC DEL <b>121.75</b>	ASR
-----------------------------	---------------------------------------	------------------------------------	-------------------------------	---------------------------	-----



CATEGORY	C	D	E
S-ILS 25*		878-1/2	200 (200-1/2)
S-LOC 25	1240-1 562 (600-1)	1240-1 1/4 562 (600-1 1/4)	1240-1 1/2 562 (600-1 1/2)
CIRCLING	1240-1 1/2 556 (600-1 1/2)	1240-2 556 (600-2)	1400-2 1/2 716 (800-2 1/2)
MIKIE INT MINIMUMS			
S-LOC 25**	1020-1/2 342 (400-1/2)	1020-3/4	342 (400-3/4)
CIRCLING	1180-1 1/2 496 (500-1 1/2)	1240-2 556 (600-2)	1400-2 1/2 716 (800-2 1/2)
S-ASR 25	1040-1/2 362 (400-1/2)	1040-1	362 (400-1)

FAF to MAP 4.9 NM					
Knots	120	140	160	180	200
Min:Sec	2:27	2:06	1:50	1:38	1:28

TOLEDO, OHIO  
Amdt 5 09239

41° 35'N-83° 48'W

TOLEDO EXPRESS (KTOL)

# HI-ILS or LOC RWY 25

EC-2, 22 OCT 2009 to 19 NOV 2009

EC-2, 22 OCT 2009 to 19 NOV 2009