

# NDB or GPS RWY 27

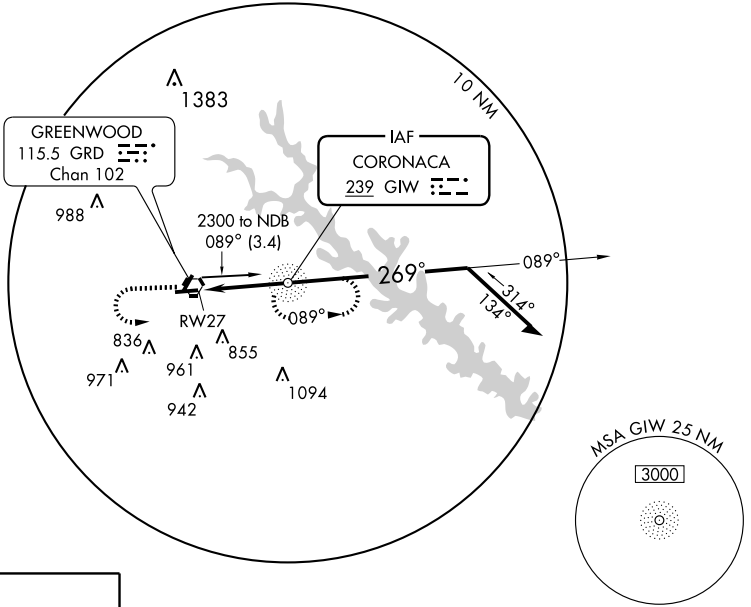
GREENWOOD COUNTY (GRD)

NDB GIW <b>239</b>	APP CRS <b>269°</b>	Rwy Idg TDZE Apt Elev	<b>5003</b> <b>629</b> <b>631</b>
-----------------------	------------------------	-----------------------------	---

**⚠** When local altimeter setting not received, use Anderson altimeter setting. Inoperative table does not apply to S-27 Cat. C and Anderson altimeter setting minimums S-27 Cat. C.

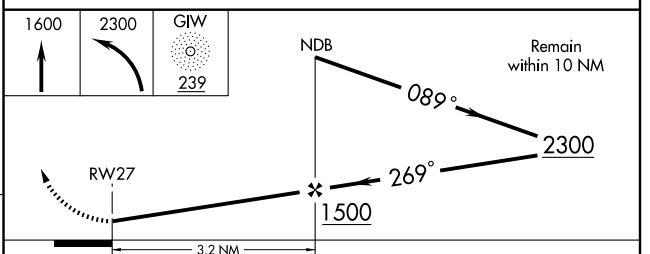
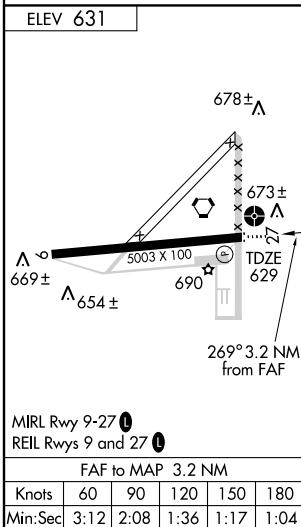
**ODALS** MISSED APPROACH: Climb to 1600 then climbing left turn to 2300 direct GIW NDB and hold.

ASOS <b>121.125</b>	GREER APP CON ★ <b>120.6 350.2</b>	UNICOM <b>122.8</b> (CTAF) <b>0</b>
------------------------	---------------------------------------	--



SE-2, 22 OCT 2009 to 19 NOV 2009

SE-2, 22 OCT 2009 to 19 NOV 2009



CATEGORY	A	B	C	D
S-27	1060-3/4	431 (500-3/4)	1060-1/4 431 (500-1/4)	1060-1/2 431 (500-1/2)
CIRCLING	1080-1 449 (500-1)	1100-1 469 (500-1)	1100-1/2 469 (500-1/2)	1280-2 649 (700-2)
ANDERSON ALTIMETER SETTING MINIMUMS				
S-27	1160-3/4	531 (600-3/4)	1160-1/2 531 (600-1/2)	1160-1/4 531 (600-1/4)
CIRCLING	1180-1	549 (600-1)	1180-1/2 549 (600-1/2)	1360-2/4 729 (800-2/4)